

CORE[®]

Core values, quality products



Product Range Brochure

Exclusively Distributed By



BIRMINGHAM – B66 1BZ

T: 0121 555 1900 E: birmingham@sbs.co.uk

BRISTOL – BS2 0UY

T: 0117 947 1111 E: bristol@sbs.co.uk

CAMBRIDGE - CB24 4AE

T: 0122 362 0926 E: cambridge@sbs.co.uk

CARDIFF – CF24 1RF

T: 0292 167 1250 E: cardiff@sbs.co.uk

DUNDEE - DD4 9UB

T: 0138 221 3600 E: dundee@sbs.co.uk

EXETER – EX2 7PJ

T: 0139 234 3210 E: exeter@sbs.co.uk

GLASGOW – G32 8RH

T: 0141 739 0060 E: glasgow@sbs.co.uk

HEATHROW – TW14 0TW

T: 0203 856 5620 E: heathrow@sbs.co.uk

HIGH WYCOMBE – HP10 0PE

T: 0149 432 6926 E: highwycombe@sbs.co.uk

HULL – HU7 0XY

T: 0148 242 4333 E: hull@sbs.co.uk

LEEDS – LS10 1AX

T: 0113 201 4222 E: leeds@sbs.co.uk

LEICESTER – LE2 7SR

T: 0116 222 7355 E: leicester@sbs.co.uk

MERSEYSIDE – CH41 9BA

T: 0151 541 6440 E: merseyside@sbs.co.uk

NEWCASTLE – NE11 0NJ

T: 0191 917 9922 E: newcastle@sbs.co.uk

NORTHAMPTON – NN4 7BX

T: 0160 476 3621 E: northampton@sbs.co.uk

NOTTINGHAM - NG6 8UZ

T: 0115 822 3696 E: nottingham@sbs.co.uk

OLDHAM – OL1 4AS

T: 0161 621 6288 E: oldham@sbs.co.uk

PETERBOROUGH – PE1 5UP

T: 0173 331 1711 E: peterborough@sbs.co.uk

RAINHAM – RM13 9DD

T: 0170 868 9900 E: london@sbs.co.uk

SHEFFIELD - S9 5DE

T: 0114 553 6500 E: sheffield@sbs.co.uk

SOUTHAMPTON – SO53 4SE

T: 0238 062 3070 E: southampton@sbs.co.uk

**CORE products are available
via our distribution partner**



CONTENTS

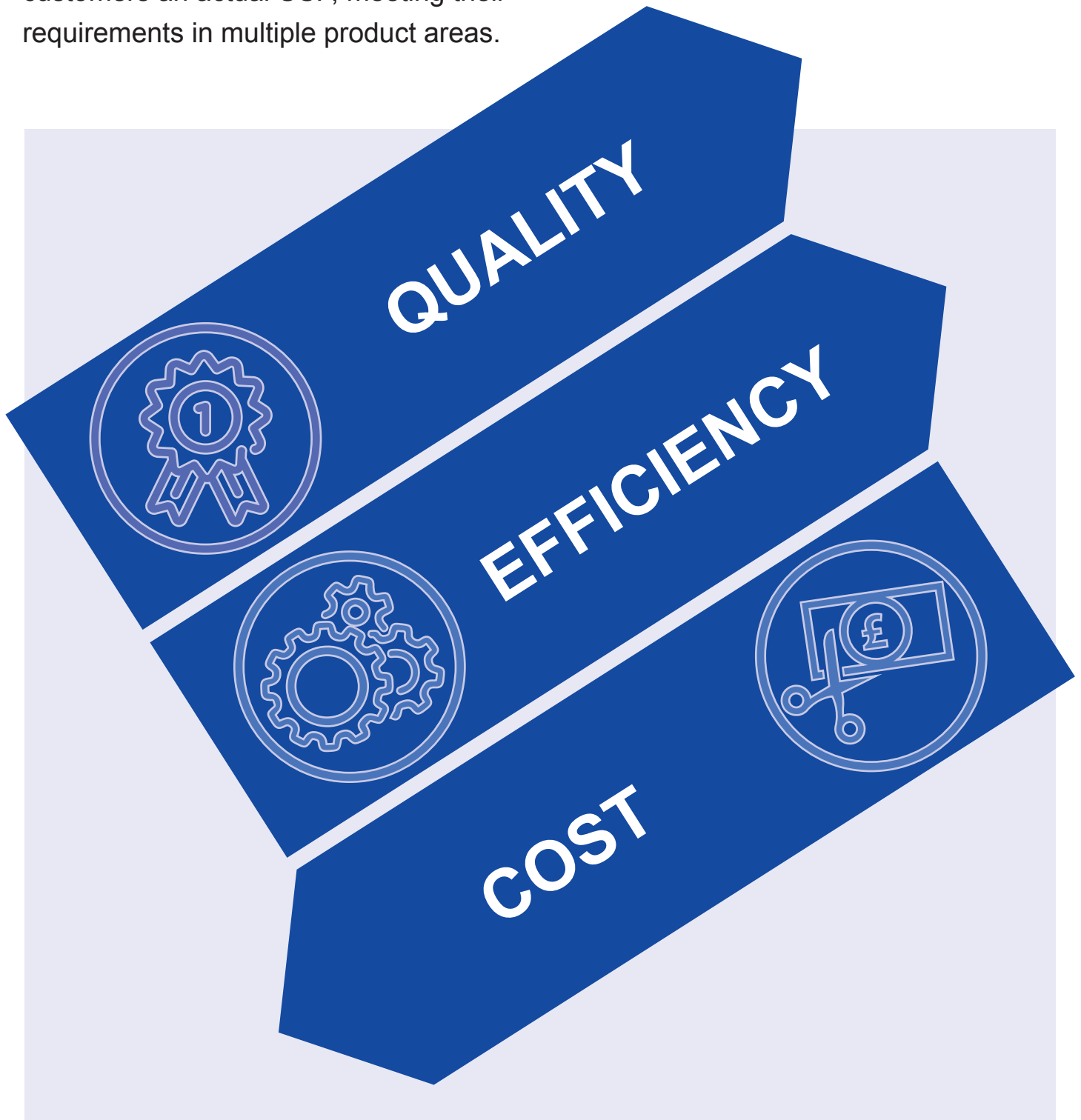
OUR BRAND	4
WHY SBS	12
TESTIMONIALS & CASE STUDY	14
FITTINGS	16
VALVES	32
PUMPS & PRESSURISATION	48
WATER TREATMENT	56
PIPE SUPPORT	64
CONTROLS	80
CONSUMABLES	86
GENERAL INFORMATION	94

Disclaimer: The information within this brochure is believed to be correct at the time of publication; however, the literature is for guideline use only. For complete accuracy, always check the product with a CORE representative. Missing information was either not available or disclosed. Confirm with the CORE technical team for complete and accurate information, as it is your responsibility that any product meets the necessary requirements. Any reliance placed upon this information will be totally at the user's risk.

OUR BRAND

Positioning

CORE is a high-quality, cost-effective alternative product range positioned in a unique space to offer Smith Brothers customers an actual USP, meeting their requirements in multiple product areas.



Customers

CORE offers customers a competitively priced, trusted alternative to other branded products across various HVAC categories. With Smith Brothers' ethos of Service and Value (since 1897) applied to every business area, including **CORE**, customers can rely on its quality, regardless of application.

Staff

Whether customer contact occurs at the trade counter, with internal sales or through external sales managers, all staff understand the preferred product choice for our customers. With dedicated staff members employed to ensure product quality with thorough auditing and monitoring systems, SBS staff can trust **CORE** products will service their customers with the utmost confidence.

Suppliers

The manufacturers selected within the **CORE** range commit to Smith Brothers that they have trust in their products and are invested in growing market share, while continuing to develop their product at every opportunity. Through constant 360-degree feedback and appraisal, product quality and relationships will strengthen over time.

Corporate Social Responsibility

The CSR strategy has been incorporated within the CORE decision-making process from the outset and continues to be regularly reviewed to see if processes can be improved further. This continuous development ensures CORE is acting responsibly within the HVAC sector with the support of stakeholders, like our customers and staff.

Nothing gets authorisation without our distribution partners' approval. Therefore, all manufacturers must conform to both CORE and Smith Brothers standards. This approach is comprehensive and ensures standards remain high.

Environmental Commitment

SBS are on the ISO 14001 accreditation journey and are on course for approval in 2024. The impending accreditation signifies efforts in the operation to mitigate environmental impacts within the processes.

Packaging is a key focal point within both CORE and Smith Brothers, reducing and sourcing sustainable, recyclable material when available without compromising the objective of safe housing and transportation of the products.



The transportation services provided by SBS are backed up with FORS Gold certification, which tangibly confirms the commitment to reducing emissions, noise pollution and improving safety standards.

The work done in this area was recognised by industry experts at The Great British Fleet Awards in April 2024, with Smith Brothers winning the Fleet Manager Superstar award.

If you're reading this text from a hard copy brochure, you'll notice on the back how our printed literature is done on carbon-balanced paper stock accredited by the World Land Trust and obtained from responsible sources which are FSC endorsed.

Ethical Sourcing

The business does not tolerate slavery or human trafficking in any part of our business, and is committed to ensuring this does not take place in our supply chain. Our commitment is set out clearly within the Modern Slavery Policy publicly viewable online at sbs.co.uk. These transparent and robust reporting systems promote best practices and ensure that commitments are ingrained throughout procedures, from staff recruitment to on-site factory visits.

At the time of publication, key personnel within both operations (SBS & CORE) are multilingual and can ensure nothing is 'lost in translation' during communications when confirming the standards required, even attending factory visits when needed.



With Smith Brothers also holding ISO 9001 accreditation, the auditing process also encompasses quality measures which ensure the manufacturing chain is not only fit for purpose, but also meets the necessary standards required within the HVAC marketplace.

Sustainability

Smith Brothers was founded in 1897, over 125 years ago, and CORE benefits from these foundations and will always make decisions based on being established just as long. This means sustainability forms the backbone of all decision-making, focusing on (but not limited to) 3 key areas:

- **Product**
- **Packaging**
- **People**

Through the ethical and environmental values embedded within the operation briefly mentioned, it ensures sustainability in the key areas highlighted above. Within the wide product range, some examples are highlighted to help demonstrate our CSR commitment.



Examples

Copper Fittings

Both Smith Brothers and CORE's manufacturing partner for copper fittings collaborate with the CuSP (Copper Sustainability Partnership), which aims to educate and inform the industry about the benefits of copper. The UK-manufactured product is also 100% recyclable.



Valves: PRV & TMV

Manufactured in an environment where 100% of packaging waste is recycled, reducing CO2 emissions and improving warehouse efficiency. Over 70% of product packaging from the UK distribution arm dispatched to Smith Brothers is made from recycled, or recyclable materials, while the process conforms to ISO 14001 standards.



Expansion Vessels

Manufactured in 'Outstanding' BREEAM conditions with 0 kWh/m² expected annual consumption of fossil fuels during production. The factory benefits from 12 car charging stations, LED light motion sensor lighting, recycled heating, PV panels and energy storage facilities.



MISSION STATEMENT

Providing a range of HVAC products that represent exceptional quality and true value, supported by the SBS service levels maintained since 1897.



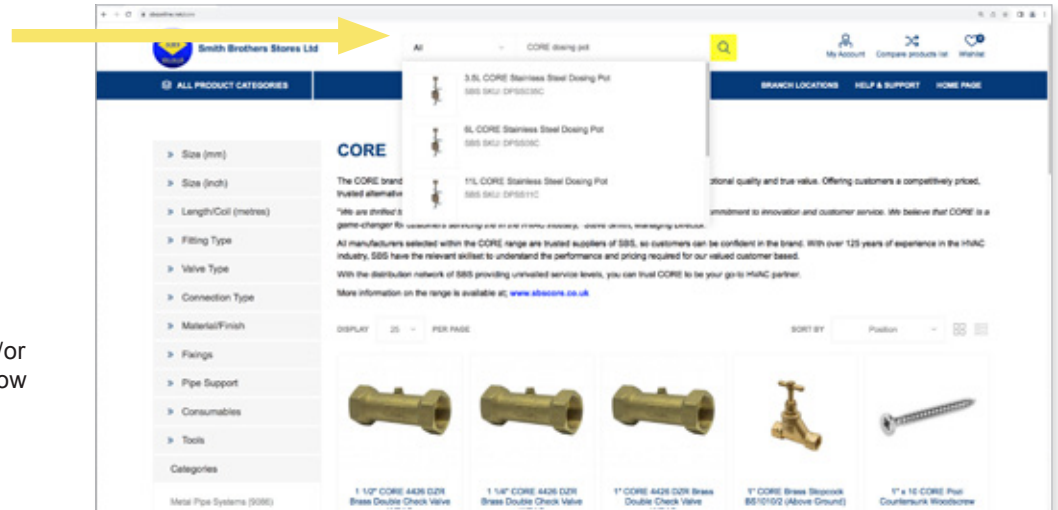
VISION STATEMENT

Ultimately, the **CORE** range aspires to be at the forefront of every HVAC installation project within the UK.

For stock and technical information for each product, our distribution partner houses all this information online at www.sbsonline.net. There are a number of ways to find the information explained below:

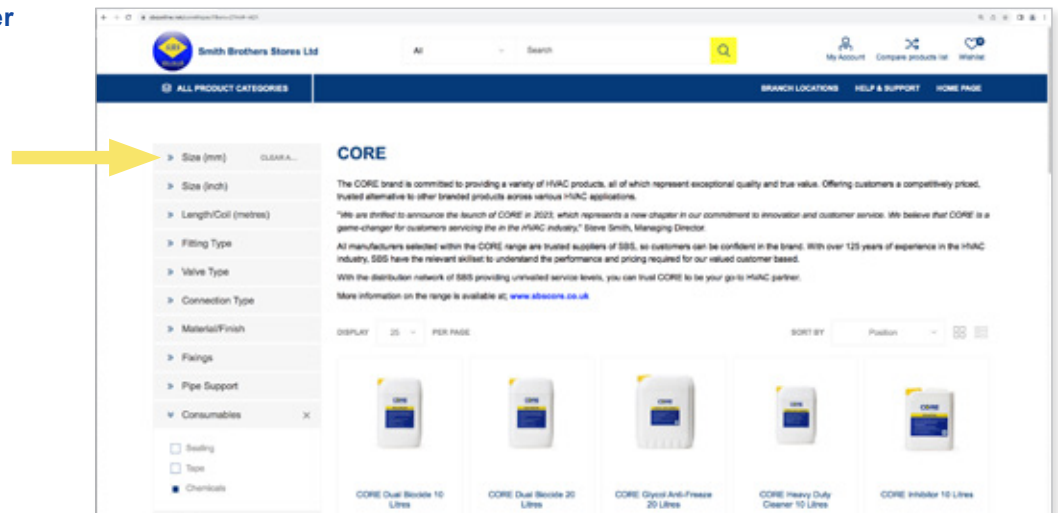
Search Bar

Type the product code or product description into the search bar and click into the relevant product.



Advanced Search

This feature allows users to search generic terms but only CORE as a manufacturer, and/or a certain category to help narrow down search further.



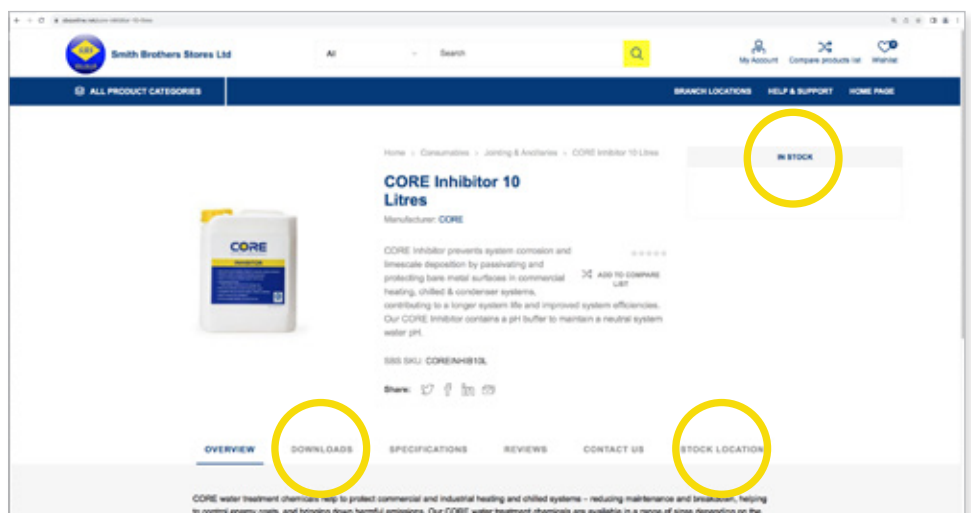
View the full range and filter

www.sbsonline.net/CORE

Visit the URL to view every single product within the range; once on this page, customers can use the left hand side filters to locate their desired product.

See stocking information

Once the user has located and clicked within the relevant product, the next screen gives both companywide (top right) and individual stocking location information (bottom right).



See technical documents

Within the downloads tab, customers can view, print and download technical product information like data sheets.

OUR BRAND

Timeline

The Journey So Far....

May 22

CORE announced by Smith Brothers as the official name of the SBS own brand range which included input from every staff member.

July 22

CORE logo design signed off.



August 22

First version of the Brand Guidelines published.



September 22

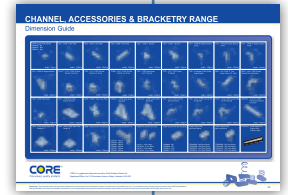
Tendering process begins for the first range of products.

October 22

First products coded on the Smith Brothers ERP platform ready for both purchasing & selling.

November 22

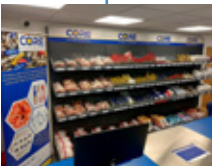
First sales aid document for SBS staff and customers land.



2022

May 23

CORE branded POS is rolled out across the SBS branch network.



June 23

Product demo cases are distributed across Smith Brothers, and the first product brochure is released.



June 23

CORE does the NEC, exhibiting at the InstallerSHOW.

July 23

Adverts populate multiple service stations across the UK promoting the range of HVAC products.



November 23

Corporate CORE video released to public showcasing range available along with ethical/environmental standards the brand conforms to.



January 24

First customer testimonial uploaded to website.

2024

December 22

CORE receives its official trademark registration certificate.



March 23

First teaser in launch campaign released on social media.



April 23

CORE roadshow completed around every SBS branch, with over 10,000 electric car miles covered along the way.



April 23

E-learning internal training documents uploaded at Smith Brothers via their SBS Academy system.

May 23

CORE is launched to the public, with website and social media channel going live, with all relevant products updated on sbsonline.net with supporting technical documents (over 2,000 files).



May 23

Billboards & magazine editorials announce CORE to the world of HVAC.



2023

February 24

Product demo cases recalled and re-distributed with updated product content, such as the PRV.



March 24

First case study signed off for public use. Project completed at Birmingham City Football Club.



May 24

We hit the front page of the H&V News celebrating 1 year since launch.



May 24

Technical Catalogue folders land at SBS branches for both staff & customers to have a physical copy to view.

May 24

Just in time for the InstallerSHOW, production is complete on the full CORE range brochure.



June 24

CORE exhibits AGAIN at the InstallerSHOW, this time bigger with even more product! Also, the new technical document page is published on sbsscore.co.uk.



WHY SBS

Knowledge & Commitment

CORE products are exclusively sold through Smith Brothers, a successful nationwide HVAC wholesaler with over 125 years of distribution experience.

The oldest and largest family owned commercial HVAC merchant



22 Depots, including HQ distribution centre



Excellent Stock Levels



£200m+ turnover per annum



Competitive pricing & quality service



Number 1 choice for mechanical service contractors



Service & Value since...1897



SBS make no secret of the promises made to their customers when talking to the building services industry. By being transparent, it not only guarantees stakeholder backing, it also notifies the staff of the level of performance we expect.

The promises break down into 3 areas:

STAFF STOCK SERVICE

STAFF

One of the key areas to the SBS success has been the investment in people throughout the business. Committed, helpful and product knowledgeable staff with excellent reputations within the industry have been key to maintaining our success. Building upon those foundations, the business works closely with CORE so information, training and relationships are maintained to a high level for the benefit of the customer. With over 125 years of experience, comes expertise and credibility.

STOCK

While others may look to reduce stock levels to improve cash flow or minimise investment, Smith Brothers remains committed to holding high levels of CORE product stock. This ensures they can support their trade counters whilst drawing from such reserve to support different stages within a project, or even a site 'take off'. Their service and stock has on many occasions fulfilled project work or back orders after customers have been let down elsewhere. On average, each branch is committed to ensuring CORE is heavily stocked, so customers are always supported.

SERVICE

The vision of SBS since the company was founded has been to offer value through service. Ensuring customers never fall short on their commitments, leading to them having a long and successful trading history. They have personnel dedicated to making sure all branches have the facilities on hand to meet demands of the external climate. Whether it be branch cranes, mezz floors, racking or extra investment in vehicles to increase delivery options and reduce lead times, SBS will do whatever is required. Smith Brothers keep the customer informed from start to finish, aiming to supply, support and surpass your expectations.



Domino M&E have been using Smith Brothers as our main supplier of HVAC products since our business started out in 2016 when our account was with the SBS Leeds depot. We have continued to use SBS, and they still remain our number 1 supplier both in terms of spend value and service attention. Our account is now with the Sheffield branch and they are just as attentive and reliable.

We love the range of products that they offer and we have been particularly impressed by the quality of the new CORE range. Our account manager is absolutely superb and the SBS next-day delivery service is like clockwork! The service we receive from our supply chain, and the quality of the products, such as CORE, is extremely important to us, because it allows us to offer the same level of service to our clients, as SBS offer to us.



Michael Peckett
Company Founder

HANDS-ON **M·E·P**

I have used a variety of CORE products such as copper fittings and valves, through to their pipe sealant cord and welding rods. Working on the tools since I was 16 within multiple plantrooms, mainly around Leicestershire under various contractors, I require quality product and materials. The CORE products used to date have always performed to the highest standards, ensuring I am never let down on site.



Aidan Knock
Pipework Engineer



After the acquisition of Birmingham City Football Club by an American consortium, a major infrastructure project was initiated to overhaul the wet heating and hot water systems throughout the lower Kop and Tilton stands. As part of the overhaul of mechanical plant, Birmingham City FC were looking for a solution for quality valves, copper fittings, and channel components to be installed in the plant room refurbishment.

The Project

For the club's principal mechanical contractor and a Smith Brothers Birmingham customer, Ignis group were engaged to commence a "turn-key" project overhauling the gas fired boilers and hot water infrastructure. As such, Ignis Group are responsible for compliance, service and maintenance of all heating and hot water services at the St Andrews stadium and West Hills training ground.

The Solution

Working in collaboration with Ignis Group, Smith Brothers obtained a detailed understanding of the technical requirements of this project. They recommended a range of CORE products for the installation, including CORE ball valves, as a quality and cost-effective alternative for the plant room at the ground.

The CORE ball valves used for the project shut off the flow to a system rather than restrict it, allowing users to isolate a section of pipework when required. The CORE range offers screwed, compression, and M&V press-ended options, in brass and DZR brass.

The comprehensive range of compression fittings are manufactured to the highest standard in the UK and complies with EN1254-1, providing the reliability, quality, and affordability that installers and consultants demand. They suit hot and cold water, heating installations, fuel, and industrial engineering applications.

The Result

With the assistance of Smith Brothers and their Area Sales Manager, Ignis completed the complete overhaul within a tight programme and budgetary constraint. Smith Brothers Birmingham Branch Manager Nathan Field said, "Being a Blues fan, it's great to see the investment our new owners are putting in. This is an example of a top quality installation from the fantastic team Ignis Group and I believe the result is a testament to their high superior levels of work!"



Implementing CORE products within their HVAC installation gives the customer peace of mind that the products offer the ultimate performance and standards you would expect from a leading brand.

The brand was devised with the customer in mind, drawing from the knowledge and expertise of 125+ years of trading history. At Smith Brothers, product quality monitoring never stops, with all stock lines having audited systems and constant 360-degree feedback from customers, manufacturers and SBS staff members.

Conclusion

Ultimately, CORE proved to be a feasible alternative to other branded options. The products installed represent exceptional quality and true value, which is supported by Smith Brothers' renowned service levels for expertise and knowledge within the industry maintained since 1897.

More Information

To view the product ranges that CORE has to offer, visit the Smith Brothers eCommerce platform, www.sbsonline.net/CORE. You can view stock availability companywide down to branch level. You can also download helpful information, including Data Sheets, IOMs, WRAS approvals and Literature, which will help users make a more informed decision.

Product literature, Product Selectors and other helpful documents can also be downloaded from our CORE website here:

www.sbscore.co.uk/downloads

FITTINGS

Our range of fittings includes end feed, solder ring and compression fittings (including DZR), with all fittings fully WRAS approved for use on potable water applications. All testing and fittings conform to EN 1254 standards manufactured within ISO 9001 working conditions, ensuring CORE fittings meet the highest quality standards.



End Feed

Our CORE end feed range is manufactured to the highest standards in the UK, providing the reliability, quality, and affordability that our installers and consultants demand. They are seamless, one-piece fittings, making them stronger and easier to use. The joint is created when solder is applied to the end feed fitting, using the process of capillary action to make an easy, effective connection. All our fittings comply with British and International standards, manufactured to BS EN 1254 under quality management standard ISO 9001:2015.

Dimensions

Equal Fittings with uniform connections are singularly sized. e.g. 15mm.

Reduced fittings with two connections are displayed with the largest size first. e.g. 22 x 15mm.

How to Braze copper fittings

1. Cut tube square with the cutter or fine hack saw (32 tooth blade is recommended). Remove Burr.
2. Clean outside end of copper tube thoroughly with sand cloth or sandpaper equal depth of fitting. Leave no dark spots.
3. Clean inside of fitting carefully to tube stop with wire brush. Note: Sand cloth or sandpaper may also be used.
4. Apply heat uniformly around the fitting with torch. When brazing rod melts upon contact with heated fitting, the proper brazing temperature has been reached. Remove flame and feed brazing rod slightly off centre at the bottom of the joint. Proceed across the bottom of the fitting and up to the top centre position. Return to the starting point, and then proceed up the incomplete side to the top, again, overlapping the filler metal. Wipe off surplus brazing alloy with a piece of cloth.

End Feed to EN1254-1 and EN1254-4



COUPLING



90° ELBOW



90° STREET ELBOW



EQUAL TEE



45° ELBOW



45° STREET ELBOW



END CAP



FITTING REDUCER
(F X C)



REDUCING COUPLER



REDUCING TEE



SLIP COUPLER



CROSS OVERS



TAP CONNECTOR



MALE ADAPTOR (IRON)



FEMALE ADAPTOR (IRON)



MALE ELBOW (IRON)



FEMALE ELBOW (IRON)



WALLPLATE ELBOW (IRON)



FEMALE TEE (BRASS)



AIR VENT CAP



CYLINDER UNION



MALE UNION (BRASS)

Product Code Description Bag Box

COUPLING

N1010	10mm	10	2400
N1015	15mm	25	2000
N1022	22mm	10	700
N1028	28mm	10	300
N1035	35mm	1	150
N1042	42mm	1	125
N1054	54mm	1	60
N1067	67mm	1	40
N1076	76mm	1	25
N1108	108mm	1	10
N1133	133mm	1	6
N1159	159mm	1	6



EQUAL TEE

N24010	10mm	10	1600
N24015	15mm	25	800
N24022	22mm	10	300
N24028	28mm	10	150
N24035	35mm	1	80
N24042	42mm	1	50
N24054	54mm	1	25
N24067	67mm	1	15
N24076	76mm	1	10
N24108	108mm	1	4
N24133	133mm	1	2
N24159	159mm	1	1



END CAP

N61010	10mm	100	2000
N61015	15mm	25	1800
N61022	22mm	10	1000
N61028	28mm	10	500
N61035	35mm	1	250
N61042	42mm	1	150
N61054	54mm	1	120
N61067	67mm	1	60
N61076	76mm	1	50
N61108	108mm	1	20
N61159	159mm	1	8



Product Code Description Bag Box

90 DEGREE ELBOW

N12010	10mm	25	4000
N12015	15mm	25	1500
N12022	22mm	25	500
N12028	28mm	10	200
N12035	35mm	1	125
N12042	42mm	1	70
N12054	54mm	1	40
N12067	67mm	1	20
N12076	76mm	1	20
N12108	108mm	1	5
N12133	133mm	1	2
N12159	159mm	1	2



90 DEGREE STREET ELBOW

N12S015	15mm	25	1400
N12S022	22mm	10	450
N12S028	28mm	10	240
N12S035	35mm	1	125
N12S042	42mm	1	80
N12S054	54mm	1	40



45 DEGREE ELBOW

N21015	15mm	25	1500
N21022	22mm	10	500
N21028	28mm	10	300
N21035	35mm	1	125
N21042	42mm	1	100
N21054	54mm	1	40
N21067	67mm	1	20
N21076	76mm	1	20
N21108	108mm	1	5
N21133	133mm	1	3
N21159	159mm	1	3



45 DEGREE STREET ELBOW

N21S015	15mm	25	1200
N21S022	22mm	10	500
N21S028	28mm	10	300
N21S035	35mm	1	125
N21S042	42mm	1	80
N21S054	54mm	1	42





Product Code	Description	Bag	Box
FITTING REDUCER (F x C)			
N6015008	15mm x 8mm	25	2000
N6015010	15mm x 10mm	25	1800
N6022015	22mm x 15mm	10	800
N6028015	28mm x 15mm	10	400
N6028022	28mm x 22mm	10	300
N6035015	35mm x 15mm	1	200
N6035022	35mm x 22mm	1	200
N6035028	35mm x 28mm	1	150
N6042015	42mm x 15mm	1	150
N6042022	42mm x 22mm	1	125
N6042028	42mm x 28mm	1	125
N6042035	42mm x 35mm	1	100
N6054015	54mm x 15mm	1	120
N6054022	54mm x 22mm	1	120
N6054028	54mm x 28mm	1	100
N6054035	54mm x 35mm	1	100
N6054042	54mm x 42mm	1	80
N6067028	67mm x 28mm	1	50
N6067035	67mm x 35mm	1	50
N6067042	67mm x 42mm	1	50
N6067054	67mm x 54mm	1	50
N6076035	76mm x 35mm	1	40
N6076042	76mm x 42mm	1	40
N6076054	76mm x 54mm	1	40
N6076067	76mm x 67mm	1	25
N6108042	108mm x 42mm	1	30
N6108054	108mm x 54mm	1	10
N6108067	108mm x 67mm	1	30
N6108076	108mm x 76mm	1	30
N6133076	133mm x 76mm	1	16
N6133108	133mm x 108mm	1	16
N6159076	159mm x 76mm	1	8
N6159108	159mm x 108mm	1	8
N6159133	159mm x 133mm	1	8
N6219159	219mm x 159mm	1	2



Product Code	Description	Bag	Box
REDUCING TEE			
N28015022	15mm x 15mm x 22mm	10	500
N25022015	22mm x 22mm x 15mm	10	300
N27022015015	22mm x 15mm x 15mm	10	400
N26022015022	22mm x 15mm x 22mm	10	300
N28022028	22mm x 22mm x 28mm	10	250
N25028015	28mm x 28mm x 15mm	10	150
N25028022	28mm x 28mm x 22mm	10	150
N27028015015	28mm x 15mm x 15mm	10	200
N26028015028	28mm x 15mm x 28mm	10	150
N27028022015	28mm x 22mm x 15mm	10	150
N27028022022	28mm x 22mm x 22mm	10	150
N26028022028	28mm x 22mm x 28mm	10	150
N25035015	35mm x 35mm x 15mm	1	125
N25035022	35mm x 35mm x 22mm	1	125
N25035028	35mm x 35mm x 28mm	1	100
N26035015035	35mm x 15mm x 35mm	1	100
N27035022022	35mm x 22mm x 22mm	1	125
N26035022035	35mm x 22mm x 35mm	1	100
N27035028022	35mm x 28mm x 22mm	1	100
N27035028028	35mm x 28mm x 28mm	1	100
N26035028035	35mm x 28mm x 35mm	1	80
N25042015	42mm x 42mm x 15mm	1	50
N25042022	42mm x 42mm x 22mm	1	50
N25042028	42mm x 42mm x 28mm	1	60
N25042035	42mm x 42mm x 35mm	1	50
N27042028028	42mm x 28mm x 28mm	1	50
N27042035035	42mm x 35mm x 35mm	1	50
N25054015	54mm x 54mm x 15mm	1	40
N25054022	54mm x 54mm x 22mm	1	40
N25054028	54mm x 54mm x 28mm	1	40
N25054035	54mm x 54mm x 35mm	1	40
N25054042	54mm x 54mm x 42mm	1	40
N27054042042	54mm x 42mm x 42mm	1	44
N25067028	67mm x 67mm x 28mm	1	25
N25067035	67mm x 67mm x 35mm	1	15
N25067042	67mm x 67mm x 42mm	1	20
N25067054	67mm x 67mm x 54mm	1	20
N25076028	76mm x 76mm x 28mm	1	10
N25076035	76mm x 76mm x 35mm	1	10
N25076042	76mm x 76mm x 42mm	1	10
N25076054	76mm x 76mm x 54mm	1	10
N25076067	76mm x 76mm x 67mm	1	10
N25108035	108mm x 108mm x 35mm	1	5
N25108042	108mm x 108mm x 42mm	1	5
N25108054	108mm x 108mm x 54mm	1	4
N25108067	108mm x 108mm x 67mm	1	4
N25108076	108mm x 108mm x 76mm	1	4
N25159076	159mm x 159mm x 76mm	1	1
N25159108	159mm x 159mm x 108mm	1	1
N25159133	159mm x 159mm x 133mm	1	1



Product Code	Description	Bag	Box
REDUCING COUPLER (C x C)			
N1R022015	22mm x 15mm	10	800
N1R028015	28mm x 15mm	10	500
N1R028022	28mm x 22mm	10	400
N1R035022	35mm x 22mm	1	200
N1R035028	35mm x 28mm	1	150

Product Code Description Bag Box

SLIP COUPLER



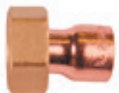
N1S015	15mm	25	1200
N1S022	22mm	10	400
N1S028	28mm	10	300
N1S035	35mm	1	180
N1S042	42mm	1	100
N1S054	54mm	1	80

CROSS OVERS



N22015	15mm Part	5	400
N22022	22mm Part	5	150
N23015	15mm Full	5	400
N23022	22mm Full	5	150

TAP CONNECTOR



N62015	15mm x 1/2" Straight	10	800
N62015020	15mm x 3/4" Straight	10	600
N62022	22mm x 3/4" Straight	10	400
N63015	15mm x 1/2" Bent	10	900
N63022	22mm x 3/4" Bent	10	300
N11M022	22mm x 3/4" Coupling	10	600
N11M028	28mm x 1" Coupling	10	250

MALE ADAPTOR (IRON)



N3015	15mm x 1/2"	25	600
N3015008	15mm x 1/4"	25	600
N3022	22mm x 3/4"	10	400
N3028	28mm x 1"	10	300
N3035	35mm x 1.1/4"	1	150
N3042	42mm x 1.1/2"	1	100
N3054	54mm x 2"	1	50
N3067	67mm x 2.1/2"	1	35
N3076	76mm x 3"	1	25
N3108	108mm x 4"	1	10

FEMALE ADAPTOR (IRON)



N2015008	15mm x 1/4"	25	600
N2015	15mm x 1/2"	25	600
N2022	22mm x 3/4"	10	400
N2028	28mm x 1"	10	300
N2035	35mm x 1.1/4"	1	150
N2042	42mm x 1.1/2"	1	75
N2054	54mm x 2"	1	50
N2067	67mm x 2.1/2"	1	50
N2076	76mm x 3"	1	25
N2108	108mm x 4"	1	10

Product Code Description Bag Box

MALE ELBOW (IRON)



N13015	15mm x 1/2"	10	400
N13022	22mm x 3/4"	10	300
N13028	28mm x 1"	10	200

FEMALE ELBOW (IRON)



N14015	15mm x 1/2"	10	400
--------	-------------	----	-----

WALLPLATE ELBOW (IRON)



N15015	15mm x 1/2"	10	400
N15022	22mm x 3/4"	10	150

FEMALE TEE



N30015	15mm x 15mm x 1/2"	10	250
N30R022015	22mm x 22mm x 1/2"	10	150
N30022	22mm x 22mm x 3/4"	10	200
N30R028015	28mm x 28mm x 1/2"	10	150
N30028	28mm x 28mm x 1"	10	100

AIR VENT CAP



N61AV015	15mm	10	500
----------	------	----	-----

CYLINDER UNION



N68022025	22mm x 1"	10	200
-----------	-----------	----	-----

MALE UNION (BRASS)



N69015	15mm x 1/2"	10	400
N69022	22mm x 3/4"	10	200
N69028	28mm x 1"	10	140
N69035	35mm x 1.1/4"	1	80
N69042	42mm x 1.1/2"	5	50
N69054	54mm x 2"	1	25



54mm sample



Working Temperatures and Pressure

Service Temperature*				
Size	Min -40°C	30°C	65°C	Max 110°C
8mm to 28mm	25 bar	25 bar	25 bar	16 bar
35mm to 54mm	25 bar	25 bar	16 bar	10 bar
67mm	16 bar	16 bar	16 bar	10 bar

* Fittings performance when correctly assembled with EN1057 copper tube using tin/copper soft solder EN29453 or tin/silver soft solder EN29453

Service Temperature**						
Size	Min -196°C	65°C	120°C	Max 150°C	Max 175°C	Max 200°C
8mm	62.5 bar	62.5 bar	58.8 bar	46.7 bar	35.5 bar	23.3 bar
10mm	50.9 bar	50.9 bar	47.9 bar	38.0 bar	28.9 bar	19.0 bar
12mm	42.9 bar	42.9 bar	40.3 bar	32.0 bar	24.3 bar	16.0 bar
15mm	40.3 bar	40.3 bar	37.9 bar	30.1 bar	22.8 bar	15.0 bar
22mm	35.6 bar	35.6 bar	33.5 bar	26.6 bar	20.2 bar	13.3 bar
28mm	28.2 bar	28.2 bar	26.5 bar	21.1 bar	16.0 bar	10.5 bar
35mm	25.2 bar	25.2 bar	23.7 bar	18.8 bar	14.3 bar	9.4 bar
42mm	23.2 bar	23.2 bar	21.8 bar	17.3 bar	13.1 bar	8.6 bar
54mm	19.8 bar	19.8 bar	18.6 bar	14.7 bar	11.2 bar	7.4 bar

** Max hydraulic working pressure for fittings when assembled with EN1057 copper tube using hard solder (brazing alloy) to EN1044

Service Temperature***					
Size	Min -196°C	65°C	120°C	Max 150°C	Max 200°C
67mm	18.6 bar	18.6 bar	17.5 bar	14.0 bar	6.9 bar
76mm	18.6 bar	18.6 bar	17.5 bar	14.0 bar	6.9 bar
108mm	17.2 bar	17.2 bar	16.2 bar	12.9 bar	6.4 bar
133mm	10.5 bar	10.5 bar	8.5 bar	7.7 bar	4.1 bar
159mm	11.7 bar	11.7 bar	9.7 bar	8.6 bar	4.6 bar

*** Max hydraulic working pressure for fittings when assembled with EN1057 copper tube using hard solder (brazing alloy) to EN1044

Solder Ring

Our comprehensive range of CORE solder ring fittings contain an integral joint of lead-free solder. The pre-soldered fitting is heated to make an easy and effective connection without using additional solder. These are suitable for commercial, industrial and engineering applications. All our fittings comply with British and International standards, manufactured to BS EN 1254 under quality management standard ISO 9001:2015.

Dimensions

Equal fittings with uniform connections are singularly sized. e.g. 15mm.

Reduced fittings with two connections are displayed with the largest size first. e.g. 22 x 15mm.

How to Solder copper fittings

1. Cut tube square with the cutter or fine hack saw (32 tooth blade is recommended). Remove Burr.
2. Clean outside end of copper tube thoroughly with sand cloth or sandpaper equal depth of fitting. Leave no dark spots.
3. Clean inside of fitting carefully to tube stop with wire brush. Note: Sand cloth or sandpaper may also be used.
4. Using a brush, apply light uniform coat of soldering flux to the outside of the tube and inside of the fitting.
5. Slip tube into fitting to tube stop. Turn tube back and forth once or twice to distribute flux evenly.

6. Apply heat uniformly around the fitting with torch. When solder melts upon contact with heated fitting, the proper soldering temperature has been reached. Remove flame and feed solder slightly off centre at the bottom of the joint. Proceed across the bottom of the fitting and up to the top centre position. Return to the starting point, and then proceed up the incomplete side to the top, again, overlapping the solder metal. Wipe off surplus solder with a piece of cloth.

CAUTION: Do not overheat the joint or direct the flame into the face of the fitting cup. Overheating could burn the flux, which will destroy its effectiveness and the solder will not enter the joint properly.

Solder Ring to EN1254-1 and EN1254-4



COUPLING



90° ELBOW



EQUAL TEE



45° ELBOW



90° STREET ELBOW



END CAP



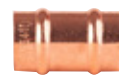
FITTING REDUCER
(F X C)



REDUCING COUPLER
(C X C)



REDUCING TEE



SLIP COUPLER



TAP CONNECTOR



MALE ADAPTOR



FEMALE ADAPTOR



MALE ELBOW



WALLPLATE ELBOW



FEMALE TEE

Product Code	Description	Bag	Box
COUPLING			
LF1008	8mm	50	3000
LF1010	10mm	50	3000
LF1015	15mm	50	1800
LF1022	22mm	25	600
LF1028	28mm	25	350
LF1035	35mm	10	210
LF1042	42mm	5	100
LF1054	54mm	5	60



Product Code	Description	Bag	Box
90 DEGREE ELBOW			
LF12008	8mm	50	1800
LF12010	10mm	50	1800
LF12015	15mm	50	1200
LF12022	22mm	25	400
LF12028	28mm	20	200
LF12035	35mm	10	120
LF12042	42mm	5	70
LF12054	54mm	2	36



Product Code	Description	Bag	Box
EQUAL TEE			
LF24015	15mm	25	600
LF24022	22mm	20	240
LF24028	28mm	10	120
LF24035	35mm	5	60
LF24042	42mm	5	50
LF24054	54mm	2	24



Product Code	Description	Bag	Box
45 DEGREE ELBOW			
LF21015	15mm	50	1400
LF21022	22mm	25	450
LF21028	28mm	20	220
LF21035	35mm	10	140
LF21042	42mm	5	80
LF21054	54mm	2	40



Product Code	Description	Bag	Box
90 DEGREE STREET ELBOW			
LF12S015	15mm	25	1200
LF12S022	22mm	25	400
LF12S028	28mm	10	200



Product Code	Description	Bag	Box
END CAP			
LF61015	15mm	50	2200
LF61022	22mm	50	1000
LF61028	28mm	25	500
LF61035	35mm	10	250
LF61042	42mm	5	150
LF61054	54mm	2	120



Product Code	Description	Bag	Box
FITTING REDUCER (F x C)			
LF6015008	15mm x 8mm	25	1800
LF6015010	15mm x 10mm	25	1800
LF6022015	22mm x 15mm	25	900
LF6028015	28mm x 15mm	25	500
LF6028022	28mm x 22mm	25	500
LF6035015	35mm x 15mm	25	400
LF6035022	35mm x 22mm	25	300
LF6035028	35mm x 28mm	15	240
LF6042015	42mm x 15mm	10	250
LF6042022	42mm x 22mm	10	200
LF6042028	42mm x 28mm	10	200
LF6042035	42mm x 35mm	10	200
LF6054015	54mm x 15mm	5	120
LF6054022	54mm x 22mm	5	120
LF6054028	54mm x 28mm	5	100
LF6054035	54mm x 35mm	5	100
LF6054042	54mm x 42mm	5	100



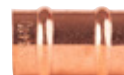
Product Code	Description	Bag	Box
REDUCING COUPLER (C x C)			
LF1R022015	22mm x 15mm	50	800
LF1R028015	28mm x 15mm	25	600
LF1R028022	28mm x 22mm	25	350
LF1R042035	42mm x 35mm	5	120



Product Code	Description	Bag	Box
REDUCING TEE			
LF28015022	15mm x 15mm x 22mm	20	400
LF27022015015	22mm x 15mm x 15mm	20	320
LF26022015	22mm x 15mm x 22mm	20	320
LF25022015	22mm x 22mm x 15mm	20	300
LF26028015	28mm x 15mm x 28mm	10	150
LF27028022015	28mm x 22mm x 15mm	10	200
LF27028022022	28mm x 22mm x 22mm	10	200
LF26028022	28mm x 22mm x 28mm	10	150
LF25028015	28mm x 28mm x 15mm	10	160
LF25028022	28mm x 28mm x 22mm	10	150
LF25035015	35mm x 35mm x 15mm	5	100
LF25035022	35mm x 35mm x 22mm	5	95
LF25035028	35mm x 35mm x 28mm	5	95
LF25042015	42mm x 42mm x 15mm	5	80
LF25042022	42mm x 42mm x 22mm	5	80
LF25042028	42mm x 42mm x 28mm	5	65
LF25042035	42mm x 42mm x 35mm	3	45
LF25054015	54mm x 54mm x 15mm	3	45
LF25054022	54mm x 54mm x 22mm	3	45
LF25054028	54mm x 54mm x 28mm	3	45
LF25054035	54mm x 54mm x 35mm	3	30
LF25054042	54mm x 54mm x 42mm	3	30



Product Code	Description	Bag	Box
SLIP COUPLER			
LF1S015	15mm Slip	50	1800
LF1S022	22mm Slip	25	600
LF1S028	28mm Slip	10	350



FITTINGS

Solder Ring

Product Code Description Bag Box

TAP CONNECTOR



LF62015	15mm x 1/2" Straight	25	600
LF62015020	15mm x 3/4" Straight	25	300
LF62022	22mm x 3/4" Straight	25	200
LF63015	15mm x 1/2" Bent	25	600
LF63022	22mm x 3/4" Bent	25	200

MALE ADAPTOR



LF3015	15mm x 1/2" Straight	25	600
LF3022	22mm x 3/4" Straight	25	400
LF3028	28mm x 1" Straight	10	300
LF3035	35mm x 1.1/4" Straight	5	150
LF3042	42mm x 1.1/2" Straight	5	100
LF3054	54mm x 2" Straight	2	70

FEMALE ADAPTOR



LF2015	15mm x 1/2"	25	600
LF2022	22mm x 3/4"	25	400
LF2028	28mm x 1"	10	300
LF2035	35mm x 1.1/4"	5	150
LF2042	42mm x 1.1/2"	5	100
LF2054	54mm x 2"	2	70



MALE ELBOW

LF13015	15mm x 1/2"	25	400
---------	-------------	----	-----



WALLPLATE ELBOW

LF15015	15mm x 1/2"	25	400
---------	-------------	----	-----



FEMALE TEE

LF30015	15mm x 1/2" Branch	25	400
LF30R022015	22mm x 1/2" Branch	10	250

FITTINGS

Solder Ring Data Sheet



Working Temperatures and Pressure

Size	Service Temperature***			
	Min -400°C	300°C	650°C	Max 1100°C
8mm to 54mm	16 bar	16 bar	10 bar	6 bar

CORE Copper Solder Ring fittings contain lead-free solder and are available from 8mm to 54mm. This range is manufactured to and complies with EN1254-1.

Suitable for use with BS EN 1057 copper tube, grades R250 and R290.

Certification

Please refer to the technical document page on the CORE website for details.

Compression and DZR

Our comprehensive range of compression fittings is manufactured to the highest standard in the UK and complies with EN1254-2, providing the reliability, quality, and affordability that our installers and consultants demand.

Compression fittings are designed to join copper pipe and create a mechanical joint upon tightening the nut. They are suitable for hot and cold water services, heating installations, fuel services and industrial engineering applications. The range includes standard brass fittings, chrome-plated fittings and dezincification resistant (DZR) fittings.

Dimensions

Equal fittings with uniform connections are singularly sized. e.g. 15mm.

Reduced fittings with two connections are displayed with the largest size first. e.g. 22 x 15mm.

How to install Compression fittings

Preliminary Information:

- A. The correct tube and fitting should be selected
- B. The sealing surfaces of the tube and fitting, including threads, should be clean and free from damage or contamination
- C. Application of a light oil to the threads can be helpful when using 35mm-54mm fittings

Assembly Preparation:

- A. Cut the tube square using a clean rotary cutter. If other cutting methods are used, such as a saw or hacksaw, use a clean, fine-toothed blade
- B. All burrs must be removed from the tube using a fine-toothed file or a deburring tool
- C. Ensure the copper tube is clean, not damaged or oval

Assembling the Fitting and Tube:

- A. Remove the nut and olive from the fitting
- B. Put the nut and olive onto the tube
- C. Insert the tube into the fitting, ensuring it is up to the tube stop

- D. Move the olive and nut down the tube to meet the threads of the fitting
- E. Hand tighten the nut to the fitting
- F. The nut should then be tightened with a spanner

Further Installation Details:

- In rare cases there can be a small weep from the joint. If this is the case the nut can be removed, and an approved jointing compound applied to the sealing face before re-tightening the nut. It is also possible to apply PTFE tape to the threads instead
- Ensure the nut is not overtightened. If in doubt, please contact us
- In normal operating conditions, after hand tightening the nut, the number of turns required to form a robust joint would be:
 - i. 10-28mm 1 turn
 - ii. 35-54mm 3/4 turn

DZR

CORE DZR compression are non-manipulative, dezincification resistant fittings. The DZR alloy is manufactured to stop stress corrosion cracking. The range is suitable for various applications such as central heating systems, chilled water and compressed air lines. They are designed for the jointing of copper tubes to BS EN 1057 copper tube, grades R250 and R290.

Compression to EN1254-2



STRAIGHT COUPLING



STRAIGHT COUPLING (CHROME)



MALE COUPLING



MALE COUPLING (CHROME)



FEMALE COUPLING



FEMALE COUPLING (CHROME)



REDUCING COUPLING



90° ELBOW



90° ELBOW (CHROME)



MALE ELBOW



MALE ELBOW (CHROME)



FEMALE ELBOW



FEMALE ELBOW (CHROME)



WALLPLATE ELBOW (CHROME)



EQUAL TEE



EQUAL TEE (CHROME)



REDUCING TEE (CHROME)



FEMALE TEE (CHROME)



END CAP



END CAP (CHROME)



REDUCING SETS (CHROME)



OLIVES - COPPER



OLIVES - BRASS

Compression DZR to EN1254-2



STRAIGHT COUPLING



MALE COUPLING (IRON)



FEMALE COUPLING (IRON)



REDUCING COUPLING



90° ELBOW



MALE ELBOW (IRON)



FEMALE ELBOW (IRON)



WALLPLATE ELBOW



TAP CONNECTOR



EQUAL TEE



REDUCING TEE



FEMALE TEE



END CAP



REDUCING SETS

Product Code Description Bag Box

STRAIGHT COUPLING

CF610015	15mm	10	300
CF610022	22mm	10	150
CF610028	28mm	10	100
CF610035	35mm	5	50
CF610042	42mm	2	36
CF610054	54mm	1	24



STRAIGHT COUPLING (CHROME)

CF910CP015	15mm	10	300
CF910CP022	22mm	10	150
CF910CP035	35mm	5	50
CF910CP042	42mm	2	20



MALE COUPLING

CF911010008	10mm x 1/4"	20	800
CF611015	15mm x 1/2"	10	300
CF911015008	15mm x 1/4"	10	300
CF611015020	15mm x 3/4"	10	200
CF911015010	15mm x 3/8"	10	300
CF911022015	22mm x 1/2"	10	200
CF611022	22mm x 3/4"	10	140
CF611022025	22mm x 1"	10	150
CF611028	28mm x 1"	10	110
CF611035	35mm x 1.1/4"	5	50
CF611042	42mm x 1.1/2"	2	36
CF611054	54mm x 2"	1	24



MALE COUPLING (CHROME)

CF911CP015	15mm x 1/2"	10	300
CF911CP022	22mm x 3/4"	10	150



FEMALE COUPLING

CF912010008	10mm x 1/4"	20	500
CF612015	15mm x 1/2"	10	300
CF612015020	15mm x 3/4"	10	250
CF612022015	22mm x 1/2"	10	200
CF612022	22mm x 3/4"	10	150
CF612028	28mm x 1"	10	100
CF612035	35mm x 1.1/4"	5	50
CF612042	42mm x 1.1/2"	2	40
CF612054	54mm x 2"	1	20



FEMALE COUPLING (CHROME)

CF912CP015	15mm x 1/2"	10	300
CF912CP022	22mm x 3/4"	10	160



Product Code Description Bag Box

REDUCING COUPLING

CF610015010	15mm x 10mm	10	300
CF910015012	15mm x 12mm	10	300
CF910028022	28mm x 22mm	10	120



90 DEGREE ELBOW

CF915008	8mm	20	500
CF915010	10mm	20	400
CF615015	15mm	10	250
CF615022	22mm	10	120
CF615028	28mm	10	70
CF615035	35mm	5	30
CF615042	42mm	2	20



90 DEGREE ELBOW (CHROME)

CF915CP015	15mm	10	250
CF915CP022	22mm	10	120
CF915CP028	28mm	10	70
CF915CP035	35mm	5	30
CF915CP042	42mm	2	20



MALE ELBOW

CF616015	15mm x 1/2"	10	250
CF916015020	15mm x 3/4"	10	150
CF616022	22mm x 3/4"	10	120
CF616035	35mm x 1.1/4"	5	30



MALE ELBOW (CHROME)

CF916CP015	15mm x 1/2"	10	250
------------	-------------	----	-----



FEMALE ELBOW

CF617015	15mm x 1/2"	10	250
CF917015020	15mm x 3/4"	10	100
CF617022	22mm x 3/4"	10	100



FEMALE ELBOW (CHROME)

CF917CP015	15mm x 1/2"	10	250
------------	-------------	----	-----



WALLPLATE ELBOW (CHROME)

CF917WCP015	15mm x 1/2"	10	120
-------------	-------------	----	-----





Product Code	Description	Bag	Box
EQUAL TEE			
CF918008	08mm	20	300
CF918010	10mm	20	300
CF618015	15mm	10	150
CF618022	22mm	10	60
CF618028	28mm	5	35
CF618035	35mm	5	20
CF618042	42mm	2	16
CF618054	54mm	1	8



Product Code	Description	Bag	Box
EQUAL TEE (CHROME)			
CF918CP015	15mm	10	150
CF918CP022	22mm	10	80
CF918CP028	28mm	10	50
CF918CP042	42mm	2	16



Product Code	Description	Bag	Box
REDUCING TEE (CHROME)			
CF918EBCP022015015	22mm x 15mm x 15mm	10	100
CF918BCP022015	22mm x 22mm x 15mm	10	80



Product Code	Description	Bag	Box
FEMALE TEE (CHROME)			
CF930CP015	15mm x 15mm x 1/2"	10	140



Product Code	Description	Bag	Box
END CAP			
CF651015	15mm	10	500
CF651022	22mm	10	300
CF651028	28mm	10	150
CF651035	35mm	10	80
CF651042	42mm	2	70
CF651054	54mm	1	35



Product Code	Description	Bag	Box
END CAP (CHROME)			
CF951CP015	15mm	10	500
CF951CP022	22mm	10	300



Product Code	Description	Bag	Box
REDUCING SETS (CHROME)			
CF948CP022015	22mm x 15mm	10	500
CF948CP028022	28mm x 22mm	10	350
CF948CP035028	35mm x 28mm	5	200



Product Code	Description	Bag	Box
OLIVES (COPPER)			
CF978B015C	15mm	250	4000
CF978B022C	22mm	100	2000
CF978B028C	28mm	50	1000
CF978B035C	35mm	50	500
CF978B042C	42mm	50	250
CF978B054C	54mm	25	200



Product Code	Description	Bag	Box
OLIVES (BRASS)			
CF978B010	10mm	400	8000
CF978B015	15mm	250	4000
CF978B022	22mm	100	2000
CF978B028	28mm	50	1000
CF978B035	35mm	50	500
CF978B042	42mm	50	250
CF978B054	54mm	25	200

Product Code Description Bag Box

STRAIGHT COUPLING

CF910010	10mm	20	500
CF910015	15mm	10	300
CF910022	22mm	10	150
CF910028	28mm	10	90
CF910035	35mm	5	50
CF910042	42mm	2	36
CF910054	54mm	1	24



MALE COUPLING (IRON)

CF911015	15mm x 1/2"	10	300
CF911015020	15mm x 3/4"	10	200
CF911022	22mm x 3/4"	10	160
CF911022025	22mm x 1"	10	150
CF911028	28mm x 1"	10	110
CF911035	35mm x 1.1/4"	5	50
CF911042	42mm x 1.1/2"	2	36
CF911054	54mm x 2"	1	24



FEMALE COUPLING (IRON)

CF912015	15mm x 1/2"	10	300
CF912022	22mm x 3/4"	10	150
CF912022025	22mm x 1"	10	150
CF912028	28mm x 1"	10	100
CF912035	35mm x 1.1/4"	5	50
CF912042	42mm x 1.1/2"	2	40
CF912054	54mm x 2"	1	20



REDUCING COUPLING

CF910015010	15mm x 10mm	10	300
CF910022015	22mm x 15mm	10	200



90 DEGREE ELBOW

CF915015	15mm x 90	10	250
CF915022	22mm x 90	10	120
CF915028	28mm x 90	10	70
CF915035	35mm x 90	5	30
CF915042	42mm x 90	2	20
CF915054	54mm x 90	1	15



MALE ELBOW (IRON)

CF916015	15mm x 1/2"	10	250
CF916022	22mm x 3/4"	10	120
CF916022025	22mm x 1"	10	70
CF916028	28mm x 1"	10	50



FEMALE ELBOW (IRON)

CF917015	15mm x 1/2"	10	250
CF917022	22mm x 3/4"	10	100
CF917022025	22mm x 1"	10	70
CF917028	28mm x 1"	10	70
CF917035	35mm x 1.1/4"	5	30
CF917042	42mm x 1.1/2"	2	20
CF917054	54mm x 2"	1	18



Product Code Description Bag Box

WALLPLATE ELBOW

CF917W015	15mm x 1/2"	10	120
CF917W022	22mm x 3/4"	10	80



TAP CONNECTOR

CF926015	15mm x 1/2" Straight	10	250
----------	----------------------	----	-----



EQUAL TEE

CF918015	15mm	10	150
CF918022	22mm	10	80
CF918028	28mm	10	50
CF918035	35mm	5	20
CF918042	42mm	2	16
CF918054	54mm	1	8



REDUCING TEE

CF918EB022015015	22mm x 15mm x 15mm	10	100
CF918E022015022	22mm x 15mm x 22mm	10	80
CF918B022015	22mm x 22mm x 15mm	10	80
CF918B028022	28mm x 22mm x 28mm	10	50



FEMALE TEE

CF930015	15mm x 15mm x 1/2"	10	140
CF930022015	22mm x 22mm x 1/2"	10	80
CF930022020	22mm x 22mm x 3/4"	10	80



END CAP

CF951015	15mm	10	500
CF951022	22mm	10	300
CF951028	28mm	10	150
CF951035	35mm	5	80
CF951042	42mm	2	70
CF951054	54mm	1	40



REDUCING SETS

CF948022015	22mm x 15mm	10	500
CF948028015	28mm x 15mm	10	500
CF948028022	28mm x 22mm	10	350
CF948035022	35mm x 22mm	5	250
CF948035028	35mm x 28mm	5	200
CF948042035	42mm x 35mm	5	100
CF948054042	54mm x 42mm	5	80



FITTINGS

Compression Data Sheet



Working Temperatures and Pressure

Size	Service Temperature			
	Min -15°C	30°C	90°C	Max 120°C
15mm	20 bar	20 bar	10 bar	6 bar
22mm	20 bar	20 bar	10 bar	6 bar
28mm	20 bar	20 bar	10 bar	6 bar
35mm	16 bar	16 bar	7 bar	4 bar
42mm	16 bar	16 bar	7 bar	4 bar
54mm	16 bar	16 bar	7 bar	4 bar

CORE compression fittings are manufactured to and comply with EN 1254-2.

Warranty

Fittings come with a 25-year guarantee on all water, heating, gas and sanitation fittings against fault or defect as a consequence of defective materials or failure to comply with the provision of the quality standard.

Installation instructions

Please refer to the Installation Manual for details.

In normal operating conditions, after hand tightening the nut, the number of turns required to form a robust joint would be:

- 10-28mm 1 turn
- 35-54mm 3/4 turn

The specific torque settings per size are as follows:

15mm	40Nm
22mm	60Nm
28mm	80Nm
35mm	100Nm
42mm	180Nm
54mm	240Nm

Certification

Please refer to the technical document page on the CORE website for details.

VALVES

CORE provides a stock range of market-leading HVAC valve solutions that bring the ultimate performance, control and high efficiency. No matter how hostile the liquid/pressure, or difficult the application is, CORE aims to provide a solution.

To see stock location and technical details for every product view: www.sbsonline.net/core-valves



VALVES

Ball

A comprehensive ball valve range with various connections, including screwed, compression and press ends, made from materials such as brass and DZR brass are available.

All the ball valves within the CORE range are WRAS approved (CORE750 and CORE800 have EN331-approved options). Alternative lever colours and, in some instances, additional handle options, such as extended lever handles, are also available.

CORE 750

Product Code *Description* *Working Temp Range* *Max Pressure*



CORE750008	8nb CORE750 Ball Valve Yellow Lever EN331 WRAS	-20°C to +60°C	5 Bar
CORE750010	10nb CORE750 Ball Valve Yellow Lever EN331 WRAS	-20°C to +60°C	5 Bar
CORE750015	15nb CORE750 Ball Valve Yellow Lever EN331 WRAS	-20°C to +60°C	5 Bar
CORE750020	20nb CORE750 Ball Valve Yellow Lever EN331 WRAS	-20°C to +60°C	5 Bar
CORE750025	25nb CORE750 Ball Valve Yellow Lever EN331 WRAS	-20°C to +60°C	5 Bar
CORE750032	32nb CORE750 Ball Valve Yellow Lever EN331 WRAS	-20°C to +60°C	5 Bar
CORE750040	40nb CORE750 Ball Valve Yellow Lever EN331 WRAS	-20°C to +60°C	5 Bar
CORE750050	50nb CORE750 Ball Valve Yellow Lever EN331 WRAS	-20°C to +60°C	5 Bar
CORE750065	65nb CORE750 Ball Valve Yellow Lever EN331 WRAS	-20°C to +60°C	5 Bar
CORE750080	80nb CORE750 Ball Valve Yellow Lever EN331 WRAS	-20°C to +60°C	5 Bar
CORE750100	100nb CORE750 Ball Valve Yellow Lever EN331 WRAS	-20°C to +60°C	5 Bar



CORE750B015	15nb CORE750 Ball Valve Blue Lever WRAS	-20°C to +140°C	40 Bar
CORE750B020	20nb CORE750 Ball Valve Blue Lever WRAS	-20°C to +140°C	40 Bar
CORE750B025	25nb CORE750 Ball Valve Blue Lever WRAS	-20°C to +140°C	40 Bar
CORE750B032	32nb CORE750 Ball Valve Blue Lever WRAS	-20°C to +140°C	40 Bar
CORE750B040	40nb CORE750 Ball Valve Blue Lever WRAS	-20°C to +140°C	40 Bar
CORE750B050	50nb CORE750 Ball Valve Blue Lever WRAS	-20°C to +140°C	40 Bar



CORE750R015	15nb CORE750 Ball Valve Red Lever WRAS	-20°C to +140°C	40 Bar
CORE750R020	20nb CORE750 Ball Valve Red Lever WRAS	-20°C to +140°C	40 Bar
CORE750R025	25nb CORE750 Ball Valve Red Lever WRAS	-20°C to +140°C	40 Bar
CORE750R032	32nb CORE750 Ball Valve Red Lever WRAS	-20°C to +140°C	40 Bar
CORE750R040	40nb CORE750 Ball Valve Red Lever WRAS	-20°C to +140°C	40 Bar
CORE750R050	50nb CORE750 Ball Valve Red Lever WRAS	-20°C to +140°C	40 Bar



CORE750EXTB015	15nb CORE750 Ball Valve Extended Spindle Blue Lever	-20°C to +140°C	40 Bar
CORE750EXTB020	20nb CORE750 Ball Valve Extended Spindle Blue Lever	-20°C to +140°C	40 Bar
CORE750EXTB025	25nb CORE750 Ball Valve Extended Spindle Blue Lever	-20°C to +140°C	40 Bar
CORE750EXTB032	32nb CORE750 Ball Valve Extended Spindle Blue Lever	-20°C to +140°C	40 Bar
CORE750EXTB040	40nb CORE750 Ball Valve Extended Spindle Blue Lever	-20°C to +140°C	40 Bar
CORE750EXTB050	50nb CORE750 Ball Valve Extended Spindle Blue Lever	-20°C to +140°C	40 Bar



CORE750EXTR015	15nb CORE750 Ball Valve Extended Spindle Red Lever	-20°C to +140°C	40 Bar
CORE750EXTR020	20nb CORE750 Ball Valve Extended Spindle Red Lever	-20°C to +140°C	40 Bar
CORE750EXTR025	25nb CORE750 Ball Valve Extended Spindle Red Lever	-20°C to +140°C	40 Bar
CORE750EXTR032	32nb CORE750 Ball Valve Extended Spindle Red Lever	-20°C to +140°C	40 Bar
CORE750EXTR040	40nb CORE750 Ball Valve Extended Spindle Red Lever	-20°C to +140°C	40 Bar
CORE750EXTR050	50nb CORE750 Ball Valve Extended Spindle Red Lever	-20°C to +140°C	40 Bar

Please note: Only yellow handle options display temp & pressure information related to gas distribution

VALVES

Ball

CORE 800

Product Code	Description	Working Temp Range	Max Pressure
CORE800Y015	15mm CORE800 Comp Ball Valve Yellow Lever EN331 WRAS	-10°C to +60°C	5 Bar
CORE800Y022	22mm CORE800 Comp Ball Valve Yellow Lever EN331 WRAS	-10°C to +60°C	5 Bar
CORE800Y028	28mm CORE800 Comp Ball Valve Yellow Lever EN331 WRAS	-10°C to +60°C	5 Bar
CORE800Y035	35mm CORE800 Comp Ball Valve Yellow Lever EN331 WRAS	-10°C to +60°C	5 Bar
CORE800Y042	42mm CORE800 Comp Ball Valve Yellow Lever EN331 WRAS	-10°C to +60°C	5 Bar
CORE800Y054	54mm CORE800 Comp Ball Valve Yellow Lever EN331 WRAS	-10°C to +60°C	5 Bar
CORE800015	15mm CORE800 Comp Ball Valve Blue Lever WRAS	-10°C to +110°C	25 Bar
CORE800022	22mm CORE800 Comp Ball Valve Blue Lever WRAS	-10°C to +110°C	25 Bar
CORE800028	28mm CORE800 Comp Ball Valve Blue Lever WRAS	-10°C to +110°C	25 Bar
CORE800035	35mm CORE800 Comp Ball Valve Blue Lever WRAS	-10°C to +110°C	25 Bar
CORE800042	42mm CORE800 Comp Ball Valve Blue Lever WRAS	-10°C to +110°C	25 Bar
CORE800054	54mm CORE800 Comp Ball Valve Blue Lever WRAS	-10°C to +110°C	25 Bar
CORE800R015	15mm CORE800 Comp Ball Valve Red Lever WRAS	-10°C to +110°C	25 Bar
CORE800R022	22mm CORE800 Comp Ball Valve Red Lever WRAS	-10°C to +110°C	25 Bar
CORE800R028	28mm CORE800 Comp Ball Valve Red Lever WRAS	-10°C to +110°C	25 Bar
CORE800R035	35mm CORE800 Comp Ball Valve Red Lever WRAS	-10°C to +110°C	25 Bar
CORE800R042	42mm CORE800 Comp Ball Valve Red Lever WRAS	-10°C to +110°C	25 Bar
CORE800R054	54mm CORE800 Comp Ball Valve Red Lever WRAS	-10°C to +110°C	25 Bar

Please note: Only yellow handle options display temp & pressure information related to gas distribution

<p>CORE 171AC</p> <p>Features</p> <ul style="list-style-type: none"> Material: DZR brass Connection: Compression ends (BS EN 1254-2 (1996)) Application: LTHW, CHW & potable water Sizes: 15 - 54mm PN25 Anti-blow-out stem Full bore  	<p>CORE 800</p> <p>Features</p> <ul style="list-style-type: none"> Material: Brass nickel plate Connection: Compression Application: LTHW, potable water & gas Sizes: 15 - 54mm PN25 Anti-blow-out stem PTFE seats & seals Full bore  	<p>CORE 171AP</p> <p>Features</p> <ul style="list-style-type: none"> Material: DZR brass Connection: Press (M & V press 15 - 35mm, Dedicated M profile 42 & 54mm) Application: LTHW, CHW & potable water Sizes: 15 - 54mm PN24 (DN15) PN20 (DN22 & DN28) PN17 (DN35 - DN54) Full bore  
<p>CORE 171A</p> <p>Features</p> <ul style="list-style-type: none"> Material: DZR brass Connection: Screwed BSP taper ends (ISO 7/1) or NPT (ANSI B1.20.1) Application: LTHW, CHW & potable water Sizes: 15 - 50nb PN40 Anti-blow-out stem Full bore  	<p>CORE 750</p> <p>Features</p> <ul style="list-style-type: none"> Material: Brass nickel plated Connection: Screwed BSP parallel (ISO 228/1) Application: LTHW, potable water & gas Sizes: 15 - 50nb PN40 Anti-blow-out stem Full bore  	<p>CORE 750 EXT</p> <p>Features</p> <ul style="list-style-type: none"> Material: Brass nickel plated Connection: Screwed BSP parallel (ISO 228/1) Application: LTHW, potable water & gas Sizes: 15 - 50nb PN40 Anti-blow-out stem Full bore Thermal extension  

CORE 171

Product Code	Description	Working Temp Range	Max Pressure
	CORE171APB015	15mm CORE171 DZR WRAS Press Fit Ends Ball Valve Blue Lever 55 (V & M Profile)	-10°C to +110°C 24 Bar
	CORE171APB022	22mm CORE171 DZR WRAS Press Fit Ends Ball Valve Blue Lever 55 (V & M Profile)	-10°C to +110°C 20 Bar
	CORE171APB028	28mm CORE171 DZR WRAS Press Fit Ends Ball Valve Blue Lever 55 (V & M Profile)	-10°C to +110°C 20 Bar
	CORE171APB035	35mm CORE171 DZR WRAS Press Fit Ends Ball Valve Blue Lever 55 (V & M Profile)	-10°C to +110°C 17 Bar
	CORE171APB042	42mm CORE171 DZR WRAS Press Fit Ends Ball Valve Blue Lever 55 ('M' Profile only)	-10°C to +110°C 17 Bar
	CORE171APB054	54mm CORE171 DZR WRAS Press Fit Ends Ball Valve Blue Lever 55 ('M' Profile only)	-10°C to +110°C 17 Bar
	CORE171APR015	15mm CORE171 DZR WRAS Press Fit Ends Ball Valve Red Lever 55 (V & M Profile)	-10°C to +110°C 24 Bar
	CORE171APR022	22mm CORE171 DZR WRAS Press Fit Ends Ball Valve Red Lever 55 (V & M Profile)	-10°C to +110°C 20 Bar
	CORE171APR028	28mm CORE171 DZR WRAS Press Fit Ends Ball Valve Red Lever 55 (V & M Profile)	-10°C to +110°C 20 Bar
	CORE171APR035	35mm CORE171 DZR WRAS Press Fit Ends Ball Valve Red Lever 55 (V & M Profile)	-10°C to +110°C 17 Bar
	CORE171APR042	42mm CORE171 DZR WRAS Press Fit Ends Ball Valve Red Lever 55 ('M' Profile only)	-10°C to +110°C 17 Bar
	CORE171APR054	54mm CORE171 DZR WRAS Press Fit Ends Ball Valve Red Lever 55 ('M' Profile only)	-10°C to +110°C 17 Bar
	CORE171AP015	15mm CORE171 DZR WRAS Press Fit Ends Ball Valve Black Lever 55 (V & M Profile)	-10°C to +110°C 24 Bar
	CORE171AP022	22mm CORE171 DZR WRAS Press Fit Ends Ball Valve Black Lever 55 (V & M Profile)	-10°C to +110°C 20 Bar
	CORE171AP028	28mm CORE171 DZR WRAS Press Fit Ends Ball Valve Black Lever 55 (V & M Profile)	-10°C to +110°C 20 Bar
	CORE171AP035	35mm CORE171 DZR WRAS Press Fit Ends Ball Valve Black Lever 55 (V & M Profile)	-10°C to +110°C 17 Bar
	CORE171AP042	42mm CORE171 DZR WRAS Press Fit Ends Ball Valve Black Lever 55 ('M' Profile only)	-10°C to +110°C 17 Bar
	CORE171AP054	54mm CORE171 DZR WRAS Press Fit Ends Ball Valve Black Lever 55 ('M' Profile only)	-10°C to +110°C 17 Bar
	CORE171A015	15nb CORE171 DZR Blue Lever Ball Valve 50 WRAS	-20°C to +130°C 40 Bar
	CORE171A020	20nb CORE171 DZR Blue Lever Ball Valve 50 WRAS	-20°C to +130°C 40 Bar
	CORE171A025	25nb CORE171 DZR Blue Lever Ball Valve 50 WRAS	-20°C to +130°C 40 Bar
	CORE171A032	32nb CORE171 DZR Blue Lever Ball Valve 50 WRAS	-20°C to +130°C 40 Bar
	CORE171A040	40nb CORE171 DZR Blue Lever Ball Valve 50 WRAS	-20°C to +130°C 40 Bar
	CORE171A050	50nb CORE171 DZR Blue Lever Ball Valve 50 WRAS	-20°C to +130°C 40 Bar
	CORE171AC015	15mm CORE171 DZR Blue Lever Comp Ball Valve 59 WRAS	-10°C to +110°C 25 Bar
	CORE171AC022	22mm CORE171 DZR Blue Lever Comp Ball Valve 59 WRAS	-10°C to +110°C 25 Bar
	CORE171AC028	28mm CORE171 DZR Blue Lever Comp Ball Valve 59 WRAS	-10°C to +110°C 25 Bar
	CORE171AC035	35mm CORE171 DZR Blue Lever Comp Ball Valve 59 WRAS	-10°C to +110°C 25 Bar
	CORE171AC042	42mm CORE171 DZR Blue Lever Comp Ball Valve 59 WRAS	-10°C to +110°C 25 Bar
	CORE171AC054	54mm CORE171 DZR Blue Lever Comp Ball Valve 59 WRAS	-10°C to +110°C 25 Bar

LOCKING DEVICE

Product Code Description



SBSBVLD1	Locking Device For 1/2" & 3/4" Ball Valve (To Suit CORE750 & 800)
SBSBVLD2	Locking Device For 1" Ball Valve (To Suit CORE750 & 800)
SBSBVLD3	Locking Device For 1.1/4" & 1.1/2" Ball Valve (To Suit CORE750 & 800)
SBSBVLD4	Locking Device For 2" Ball Valve (To Suit CORE750 & 800)

VALVES

Product Selector (Ball/Butterfly)

	CORE 171A DZR BRASS	CORE 171AC DZR BRASS	CORE 750 BRASS	CORE 800 BRASS	CORE 171AP DZR BRASS	CORE 140 Lugged PN16 Lever
						
Albion	ART 50	ART 59	ART 40	ART 89	ART 55PRS	ART 135
Crane	D171A	D171AC	N/A	N/A	D171A.PF	F624 (WRAS) F628 (Non-WRAS)
Hattersley	100	100C	N/A	N/A	100.PF	970W
Oventrop	10790	N/A	10760	N/A	10771	10484
BOSS	965S	N/A	966S	968S	986P	16LSE
Jet	N/A	N/A	BBV21	BBV24	N/A	624
Pegler	PB550	PB350	PB700	PB300	PS550	V905 (G)
Herz	21900x	21904x	N/A	N/A	N/A	HV-BF-FLL (G)
IMI TA	421500008	42150002	N/A	N/A	N/A	42450037



CORE 171A



CORE 171AC



CORE 750



CORE 800



CORE 171AP



CORE 140

Disclaimer

The information is believed to be correct at the time of publication; however, the document is for guideline use only. For complete accuracy, always check the product with a CORE representative. Missing information was either not available or disclosed. It is your responsibility that any product meets the necessary requirements. Any reliance placed upon this information will be totally at the user's risk.

Butterfly

The CORE140 range is a lugged and tapped butterfly valve. It is an easy-to-operate isolation solution that can be utilised on many different applications, across multiple industries. The range is also WRAS approved, so it can be used on potable water applications. Some common uses include heating and ventilation systems, hot and chilled water supply, process applications and water treatment. The valve has an EPDM seal and a stainless steel 316 disc, with a maximum working pressure of up to 16 bar.



Butterfly

Product Code	Description	Working Temp Range	Max Pressure
CORE140050	50nb CORE140 WRAS L&T B'Fly Valve EPDM Liner SS Disc Lever	-10°C to +110°C	16 Bar
CORE140065	65nb CORE140 WRAS L&T B'Fly Valve EPDM Liner SS Disc Lever	-10°C to +110°C	16 Bar
CORE140080	80nb CORE140 WRAS L&T B'Fly Valve EPDM Liner SS Disc Lever	-10°C to +110°C	16 Bar
CORE140100	100nb CORE140 WRAS L&T B'Fly Valve EPDM Liner SS Disc Lever	-10°C to +110°C	16 Bar
CORE140125	125nb CORE140 WRAS L&T B'Fly Valve EPDM Liner SS Disc Lever	-10°C to +110°C	16 Bar
CORE140150	150nb CORE140 WRAS L&T B'Fly Valve EPDM Liner SS Disc Lever	-10°C to +110°C	16 Bar
CORE140200	200nb CORE140 WRAS L&T B'Fly Valve EPDM Liner SS Disc Lever	-10°C to +110°C	16 Bar
CORE140250	250nb CORE140 WRAS L&T B'Fly Valve EPDM Liner SS Disc Lever	-10°C to +110°C	16 Bar
CORE140300	300nb CORE140 WRAS L&T B'Fly Valve EPDM Liner SS Disc Lever	-10°C to +110°C	16 Bar

Gate

CORE currently offers BSP brass screwed gate valves (½" to 4"), cast iron flanged gate valves (DN50 to DN300) and ductile iron resilient seat flanged gate valves (DN50 to DN300). Flanged options have a maximum pressure rating of 16 bar, with screwed options up to 20 bar. All are tested to the relevant British Standards.



Cast Iron

Product Code	Description	Working Temp Range	Max Pressure
CORE395200HW	2" CORE 395 PN16 Cast Iron Gate Valve Handwheel BS5150	-10°C to +230°C	16 Bar
CORE395250HW	2".1/2 CORE 395 PN16 Cast Iron Gate Valve Handwheel BS5150	-10°C to +230°C	16 Bar
CORE395300HW	3" CORE 395 PN16 Cast Iron Gate Valve Handwheel BS5150	-10°C to +230°C	16 Bar
CORE395400HW	4" CORE 395 PN16 Cast Iron Gate Valve Handwheel BS5150	-10°C to +230°C	16 Bar
CORE395500HW	5" CORE 395 PN16 Cast Iron Gate Valve Handwheel BS5150	-10°C to +230°C	16 Bar
CORE395600HW	6" CORE 395 PN16 Cast Iron Gate Valve Handwheel BS5150	-10°C to +230°C	16 Bar
CORE395800HW	8" CORE 395 PN16 Cast Iron Gate Valve Handwheel BS5150	-10°C to +230°C	16 Bar
CORE3951000HW	10" CORE 395 PN16 Cast Iron Gate Valve Handwheel BS5150	-10°C to +230°C	16 Bar
CORE3951200HW	12" CORE 395 PN16 Cast Iron Gate Valve Handwheel BS5150	-10°C to +230°C	16 Bar



Ductile Iron Resilient Seat

Product Code	Description	Working Temp Range	Max Pressure
CORE391200HW	2" CORE 391 PN16 WRAS Ductile Iron NRS Resilient Seat Gate Valve	0°C to +80°C	16 Bar
CORE391250HW	2.1/2" CORE 391 PN16 WRAS Ductile Iron NRS Resilient Seat Gate Valve	0°C to +80°C	16 Bar
CORE391300HW	3" CORE 391 PN16 WRAS Ductile Iron NRS Resilient Seat Gate Valve	0°C to +80°C	16 Bar
CORE391400HW	4" CORE 391 PN16 WRAS Ductile Iron NRS Resilient Seat Gate Valve	0°C to +80°C	16 Bar
CORE391500HW	5" CORE 391 PN16 WRAS Ductile Iron NRS Resilient Seat Gate Valve	0°C to +80°C	16 Bar
CORE391600HW	6" CORE 391 PN16 WRAS Ductile Iron NRS Resilient Seat Gate Valve	0°C to +80°C	16 Bar
CORE391800HW	8" CORE 391 PN16 WRAS Ductile Iron NRS Resilient Seat Gate Valve	0°C to +80°C	16 Bar
CORE3911000HW	10" CORE 391 PN16 WRAS Ductile Iron NRS Resilient Seat Gate Valve	0°C to +80°C	16 Bar
CORE3911200HW	12" CORE 391 PN16 WRAS Ductile Iron NRS Resilient Seat Gate Valve	0°C to +80°C	16 Bar



BSP Brass

Product Code	Description	Working Temp Range	Max Pressure
CORE630050	1/2" CORE 630 BS5154 PN20 BSPT Brass Gate Valve Handwheel	-20°C to +170°C	20 Bar
CORE630075	3/4" CORE 630 BS5154 PN20 BSPT Brass Gate Valve Handwheel	-20°C to +170°C	20 Bar
CORE630100	1" CORE 630 BS5154 PN20 BSPT Brass Gate Valve Handwheel	-20°C to +170°C	20 Bar
CORE630125	1.1/4" CORE 630 BS5154 PN20 BSPT Brass Gate Valve Handwheel	-20°C to +170°C	20 Bar
CORE630150	1.1/2" CORE 630 BS5154 PN20 BSPT Brass Gate Valve Handwheel	-20°C to +170°C	20 Bar
CORE630200	2" CORE 630 BS5154 PN20 BSPT Brass Gate Valve Handwheel	-20°C to +170°C	20 Bar
CORE630250	2.1/2" CORE 630 BS5154 PN20 BSPT Brass Gate Valve Handwheel	-20°C to +170°C	20 Bar
CORE630300	3" CORE 630 BS5154 PN20 BSPT Brass Gate Valve Handwheel	-20°C to +170°C	20 Bar
CORE630400	4" CORE 630 BS5154 PN20 BSPT Brass Gate Valve Handwheel	-20°C to +170°C	20 Bar



Brass Compression

Product Code	Description	Working Temp Range	Max Pressure
CF416015	15mm CORE Brass BS Compression Gate valve	-10°C to +90°C	16 Bar
CF416022	22mm CORE Brass BS Compression Gate valve	-10°C to +90°C	16 Bar
CF416028	28mm CORE Brass BS Compression Gate valve	-10°C to +90°C	16 Bar



Brass Compression (c/w lockshield)

Product Code	Description	Working Temp Range	Max Pressure
CF416LS015	15mm CORE Brass BS Compression LS Gate valve	-10°C to +90°C	16 Bar
CF416LS022	22mm CORE Brass BS Compression LS Gate valve	-10°C to +90°C	16 Bar
CF416LS028	28mm CORE Brass BS Compression LS Gate valve	-10°C to +90°C	16 Bar

Globe

CORE currently offers flange mounted (PN16) cast iron globe valves from DN50 (15.6kg) to DN300 (302kg), which all conform to EN13789.



Globe

Product Code	Description	Working Temp Range	Max Pressure
CORE382200HW	2" CORE 382 PN16 Cast Iron Globe Valve OSY Handwheel BS5152	-10°C to +230°C	16 Bar
CORE382250HW	2.1/2" CORE 382 PN16 Cast Iron Globe Valve OSY Handwheel BS5152	-10°C to +230°C	16 Bar
CORE382300HW	3" CORE 382 PN16 Cast Iron Globe Valve OSY Handwheel BS5152	-10°C to +230°C	16 Bar
CORE382400HW	4" CORE 382 PN16 Cast Iron Globe Valve OSY Handwheel BS5152	-10°C to +230°C	16 Bar
CORE382500HW	5" CORE 382 PN16 Cast Iron Globe Valve OSY Handwheel BS5152	-10°C to +230°C	16 Bar
CORE382600HW	6" CORE 382 PN16 Cast Iron Globe Valve OSY Handwheel BS5152	-10°C to +230°C	16 Bar
CORE382800HW	8" CORE 382 PN16 Cast Iron Globe Valve OSY Handwheel BS5152	-10°C to +230°C	16 Bar
CORE3821000HW	10" CORE 382 PN16 Cast Iron Globe Valve OSY Handwheel BS5152	-10°C to +230°C	16 Bar
CORE3821200HW	12" CORE 382 PN16 Cast Iron Globe Valve OSY Handwheel BS5152	-10°C to +230°C	16 Bar

Check

CORE currently offers check valves which conform to EN13959 & 1092 standards, depending on valve type, and the dual plate wafer & screwed double check valves are WRAS approved. The range currently consists of the following:

- **Dual plate wafer** – cast iron (DN50 to DN300)
- **Swing PN16** – cast iron (DN50 to DN300)
- **DZR brass double check valve** – screwed (½" to 2") & compression (15 – 28mm)

Dual Plate Wafer (Cast Iron)



Product Code	Description	Working Temp Range	Max Pressure
CORE126200	2" CORE 126 C/I PN16 WRAS Dual Plate Wafer Check Valve	-10°C to +120°C	16 Bar
CORE126250	2.1/2" CORE 126 C/I PN16 WRAS Dual Plate Wafer Check Valve	-10°C to +120°C	16 Bar
CORE126300	3" CORE 126 C/I PN16 WRAS Dual Plate Wafer Check Valve	-10°C to +120°C	16 Bar
CORE126400	4" CORE 126 C/I PN16 WRAS Dual Plate Wafer Check Valve	-10°C to +120°C	16 Bar
CORE126500	5" CORE 126 C/I PN16 WRAS Dual Plate Wafer Check Valve	-10°C to +120°C	16 Bar
CORE126600	6" CORE 126 C/I PN16 WRAS Dual Plate Wafer Check Valve	-10°C to +120°C	16 Bar
CORE126800	8" CORE 126 C/I PN16 WRAS Dual Plate Wafer Check Valve	-10°C to +120°C	16 Bar
CORE1261000	10" CORE 126 C/I PN16 WRAS Dual Plate Wafer Check Valve	-10°C to +120°C	16 Bar
CORE1261200	12" CORE 126 C/I PN16 WRAS Dual Plate Wafer Check Valve	-10°C to +120°C	16 Bar

Please note: For WRAS applications temperature range is up to +85°C



Swing (Cast Iron)

Product Code	Description	Working Temp Range	Max Pressure
CORE362200CV	2" CORE 362 PN16 Cast Iron Swing Check Valve	-10°C to +230°C	16 Bar
CORE362250CV	2.1/2" CORE 362 PN16 Cast Iron Swing Check Valve	-10°C to +230°C	16 Bar
CORE362300CV	3" CORE 362 PN16 Cast Iron Swing Check Valve	-10°C to +230°C	16 Bar
CORE362400CV	4" CORE 362 PN16 Cast Iron Swing Check Valve	-10°C to +230°C	16 Bar
CORE362500CV	5" CORE 362 PN16 Cast Iron Swing Check Valve	-10°C to +230°C	16 Bar
CORE362600CV	6" CORE 362 PN16 Cast Iron Swing Check Valve	-10°C to +230°C	16 Bar
CORE362800CV	8" CORE 362 PN16 Cast Iron Swing Check Valve	-10°C to +230°C	16 Bar
CORE3621000CV	10" CORE 362 PN16 Cast Iron Swing Check Valve	-10°C to +230°C	16 Bar
CORE3621200CV	12" CORE 362 PN16 Cast Iron Swing Check Valve	-10°C to +230°C	16 Bar



DZR Double Check

Product Code	Description	Working Temp Range	Max Pressure
CF4426WRAS015	1/2" CORE 4426 DZR Brass Double Check Valve WRAS	-10°C to 85°C	16 Bar
CF4426WRAS020	3/4" CORE 4426 DZR Brass Double Check Valve WRAS	-10°C to 85°C	16 Bar
CF4426WRAS025	1" CORE 4426 DZR Brass Double Check Valve WRAS	-10°C to 85°C	16 Bar
CF4426WRAS032	1.1/4" CORE 4426 DZR Brass Double Check Valve WRAS	-10°C to 85°C	16 Bar
CF4426WRAS040	1.1/2" CORE 4426 DZR Brass Double Check Valve WRAS	-10°C to 85°C	16 Bar
CF4426WRAS050	2" CORE 4426 DZR Brass Double Check Valve WRAS	-10°C to 85°C	16 Bar



DZR Double Check (Compression)

Product Code	Description	Working Temp Range	Max Pressure
CF4424WRAS015	15mm CORE WRAS DZR Comp Double Check Valve	-10°C to 85°C	10 Bar
CF4424WRAS022	22mm CORE WRAS DZR Comp Double Check Valve	-10°C to 85°C	10 Bar
CF4424WRAS028	28mm CORE WRAS DZR Comp Double Check Valve	-10°C to 85°C	10 Bar

Service

CORE service valves are marked for full traceability, supported by full warranty, and compliant with relevant British standards. Manufactured from high quality, robust brass material, the yellow brass range offers a wide array of products ideal for heating and hot and cold water applications.



Service

Product Code	Description	Working Temp Range	Max Pressure
SVL015	15mm CORE Chrome Plated Service Valve c/w Lever	0°C to 85°C	10 Bar
SVA015	15 x 15 CORE CP Cu x Cu Angled Service Valve	0°C to 85°C	10 Bar
SVFBWRAS015	15mm CORE CP *Full Bore* Service Valve WRAS	0°C to 85°C	16 Bar
SVFBWRAS022	22mm CORE CP *Full Bore* Service Valve WRAS	0°C to 85°C	16 Bar
SVWRAS015	15mm CORE CP L/P Service Valve CxC WRAS	0°C to 85°C	10 Bar
SVWRAS022	22mm CORE CP L/P Service Valve CxC WRAS	0°C to 85°C	10 Bar
SVBWRAS015	15 x 1/2" CORE CP Service Valve Bent Swivel WRAS	0°C to 85°C	10 Bar
SVSWRAS015	15 x 1/2" CORE CP Service Valve Str Swivel WRAS	0°C to 85°C	10 Bar
BVHP015	15nb CORE High Pressure Ball Valve Part 1	0°C to 85°C	14 Bar
BVHP2015	15nb CORE High Pressure Ball Valve Part 2	0°C to 85°C	14 Bar
WMTWRAS015	15 x 3/4" CORE Straight Washing M/C Tap WRAS	0°C to 85°C	10 Bar
WMTWRAS015VAL	15 x 3/4" CORE Straight Washing M/C Tap c/w Check Valve WRAS	0°C to 85°C	10 Bar
WMTWRAS015ANG	15 x 3/4" CORE Angled Washing Machine Tap WRAS	0°C to 85°C	10 Bar



Stopcocks

The above ground stopcock range has both screwed (1/2" to 2") and compression ended (15mm to 54mm) connection options. 15mm to 28mm compression ended options are WRAS approved. Manufactured from high quality, robust brass material, the yellow brass range offers a wide array of products ideal for heating and hot and cold water applications. All are tested to the relevant British standards.



Stopcocks

Product Code	Description	Working Temp Range	Max Pressure
CF704015	1/2" CORE Brass Stopcock BS1010/2 (Above Ground)	0°C to +85°C	16 Bar
CF704020	3/4" CORE Brass Stopcock BS1010/2 (Above Ground)	0°C to +85°C	16 Bar
CF704025	1" CORE Brass Stopcock BS1010/2 (Above Ground)	0°C to +85°C	16 Bar
CF704040	1.1/4" CORE Brass Stopcock BS1010/2 (Above Ground)	0°C to +85°C	16 Bar
CF704032	1.1/2" CORE Brass Stopcock BS1010/2 (Above Ground)	0°C to +85°C	16 Bar
CF704050	2" CORE Brass Stopcock BS1010/2 (Above Ground)	0°C to +85°C	16 Bar
CF551WRAS015	15mm CORE WRAS Approved Compression Stopcock	0°C to +85°C	16 Bar
CF551WRAS022	22mm CORE WRAS Approved Compression Stopcock	0°C to +85°C	16 Bar
CF551WRAS028	28mm CORE WRAS Approved Compression Stopcock	0°C to +85°C	16 Bar
CF551035	35mm CORE Compression Stopcock	0°C to +85°C	16 Bar
CF551042	42mm CORE Compression Stopcock	0°C to +85°C	16 Bar
CF551054	54mm CORE Compression Stopcock	0°C to +85°C	16 Bar



Strainers

CORE strainers can be used to remove any particulates or debris that may be present in a pipework system, helping to protect other types of equipment from damage. Our screwed BSP bronze Y strainer is WRAS-approved, tested to BS EN 12266 standards and classified in accordance with PED 2014/68/EU. Our cast iron Y strainer has been tested to BS EN1092 and BS EN558-1, and comes with circular drain ports on DN80 and above, square drain ports for DN50 and DN65.



Strainers (Screwed)

Product Code	Description	Working Temp Range	Max Pressure
CORE370015	1/2" CORE 370 WRAS BSPT PN20 Bronze Y Type Strainer	-10°C to +170°C	20 Bar
CORE370020	3/4" CORE 370 WRAS BSPT PN20 Bronze Y Type Strainer	-10°C to +170°C	20 Bar
CORE370025	1" CORE 370 WRAS BSPT PN20 Bronze Y Type Strainer	-10°C to +170°C	20 Bar
CORE370032	1.1/4" CORE 370 WRAS BSPT PN20 Bronze Y Type Strainer	-10°C to +170°C	20 Bar
CORE370040	1.1/2" CORE 370 WRAS BSPT PN20 Bronze Y Type Strainer	-10°C to +170°C	20 Bar
CORE370050	2" CORE 370 WRAS BSPT PN20 Bronze Y Type Strainer	-10°C to +170°C	20 Bar



Strainers (Flanged)

Product Code	Description	Working Temp Range	Max Pressure
CORE374WRAS200ST	2" CORE 374 WRAS PN16 Cast Iron Y Type Strainer	-10°C to 85°C	16 Bar
CORE374WRAS250ST	2.1/2" CORE 374 WRAS PN16 Cast Iron Y Type Strainer	-10°C to 85°C	16 Bar
CORE374WRAS300ST	3" CORE 374 WRAS PN16 Cast Iron Y Type Strainer	-10°C to 85°C	16 Bar
CORE374WRAS400ST	4" CORE 374 WRAS PN16 Cast Iron Y Type Strainer	-10°C to 85°C	16 Bar
CORE374WRAS500ST	5" CORE 374 WRAS PN16 Cast Iron Y Type Strainer	-10°C to 85°C	16 Bar
CORE374WRAS600ST	6" CORE 374 WRAS PN16 Cast Iron Y Type Strainer	-10°C to 85°C	16 Bar
CORE374WRAS800ST	8" CORE 374 WRAS PN16 Cast Iron Y Type Strainer	-10°C to 85°C	16 Bar
CORE374WRAS1000ST	10" CORE 374 WRAS PN16 Cast Iron Y Type Strainer	-10°C to 85°C	16 Bar
CORE374WRAS1200ST	12" CORE 374 WRAS PN16 Cast Iron Y Type Strainer	-10°C to 85°C	16 Bar
CORE372200ST	2 CORE 372 PN16 Cast Iron Y Strainer	-10°C to +230°C	16 Bar
CORE372250ST	2.1/2 CORE 372 PN16 Cast Iron Y Strainer	-10°C to +230°C	16 Bar
CORE372300ST	3 CORE 372 PN16 Cast Iron Y Strainer	-10°C to +230°C	16 Bar
CORE372400ST	4 CORE 372 PN16 Cast Iron Y Strainer	-10°C to +230°C	16 Bar
CORE372500ST	5 CORE 372 PN16 Cast Iron Y Strainer	-10°C to +230°C	16 Bar
CORE372600ST	6 CORE 372 PN16 Cast Iron Y Strainer	-10°C to +230°C	16 Bar
CORE372800ST	8 CORE 372 PN16 Cast Iron Y Strainer	-10°C to +230°C	16 Bar
CORE3721000ST	10 CORE 372 PN16 Cast Iron Y Strainer	-10°C to +230°C	16 Bar
CORE3721200ST	12 CORE 372 PN16 Cast Iron Y Strainer	-10°C to +230°C	16 Bar



AAV

The automatic air release valves (AAV) automatically eliminate the air that can build up inside a heating system. The presence of air inside sealed heating systems can result in negative adversities that will affect the correct function and performance of the system.

The valve installation uses a PTM system (O-Ring seal) which allows a quick and safe installation, without the need for additional sealing materials like hemp or PTFE tape. The valve is supplied with a non-return/check valve to facilitate removal for servicing without the need to drain the system.



AAV

Product Code	Description	Working Temp Range	Max Pressure
AD0050800012	1/2" CORE 508 Auto Air Vent c/w Check Valve	Up to 110°C	10 Bar

Test Plugs

The contents of a piping system may need checking at various points in the line; a test plug installed allows this to happen in a cost-effective solution. CORE test plugs have a brass body, cap and retaining ring with the cap seal made of neoprene rubber. They are suitable for hot water, chilled water and low-temperature steam (up to 135°C).

Specification

Thread	Length (inc. cap)	Max Probe Diameter
8mm (1/4") BSPT	38mm (75mm extended option)	4mm
15mm (1/2") BSPT	40mm (78mm extended option)	4mm



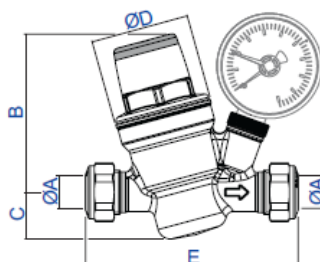
Test Plugs

Product Code	Description	Working Temp Range	Max Pressure
TPN008	1/4" Brass Test Point BEA100	-10°C to 120°C	35 Bar
TPNEXT008	1/4" Brass Extended Test Point BEA100EXT	-10°C to 120°C	35 Bar
TPN015	1/2" CORE Brass Test Point EP15	-10°C to 120°C	35 Bar
TPNEXT015	1/2" CORE Brass Extended Test Point EP15EX	-10°C to 120°C	35 Bar

PRV

The CORE Pressure Reducing Valve is WRAS approved and certified according to BS EN 1567 for operating with inlet water temperatures up to 80°C. Supplied complete with a pressure gauge with compression or screwed ends, complying with BS EN 1254-2 for use with R250 (half hard) copper tube.

Ø A	15mm	22mm
B	74.5mm	74.5mm
C	22mm	22mm
Ø D	46mm	46mm
E	100mm	100mm
Kg	0.50kg	0.55kg



PRV

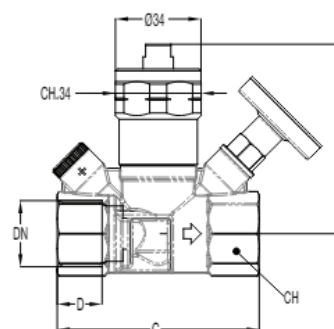
Product Code	Description	Working Temp Range	Max Pressure	Connection
COREPRV015	15mm CORE 533 High Temp PRV c/w Gauge WRAS	Up to 80°C	16 Bar	Compression
COREPRV022	22mm CORE 533 High Temp PRV c/w Gauge WRAS	Up to 80°C	16 Bar	Compression
CPRVWRAS015	15nb CORE BSPP Male Brass PRV c/w Gauge WRAS	Up to 80°C	16 Bar	Screwed
CPRVWRAS020	20nb CORE BSPP Male Brass PRV c/w Gauge WRAS	Up to 80°C	16 Bar	Screwed
CPRVWRAS025	25nb CORE BSPP Male Brass PRV c/w Gauge WRAS	Up to 80°C	16 Bar	Screwed
CPRVWRAS032	32nb CORE BSPP Male Brass PRV c/w Gauge WRAS	Up to 80°C	16 Bar	Screwed
CPRVWRAS040	40nb CORE BSPP Male Brass PRV c/w Gauge WRAS	Up to 80°C	16 Bar	Screwed
CPRVWRAS050	50nb CORE BSPP Male Brass PRV c/w Gauge WRAS	Up to 80°C	16 Bar	Screwed



TBV

The CORE thermostatic balancing valve (TBV) is a WRAS-approved Anti-Legionella device that will help keep the temperature evenly distributed and reduce 'dead-legs'. The valve aims to improve the efficiency of DHW systems through automatic regulation and will reduce heat loss through lower circulation of hot water. The valve will automatically respond to changes in system temperature and flow requirements.

DN	1/2"	3/4"	1"
B	73mm	75mm	77mm
C	77mm	80mm	87mm
D	17mm	18.50mm	21mm
CH	25mm	31mm	38mm
Kg	0.49kg	0.55kg	0.65kg



TBV

Product Code	Description	Working Temp Range	Max Pressure
CORETBV32015	15nb CORE DZR Brass Adjustable TBV C/W Gauge WRAS	40°C to 60°C	25 Bar
CORETBV32020	20nb CORE DZR Brass Adjustable TBV C/W Gauge WRAS	40°C to 60°C	25 Bar
CORETBV32025	25nb CORE DZR Brass Adjustable TBV C/W Gauge WRAS	40°C to 60°C	25 Bar



VALVES

Product Selector (PRV & TBV)



	CORE 533 PRV	Albion 675 PRV	Reliance Predator	Intatec PRV	BOSS PRV 216
MPN	COREPRV015	ASAP6751522	PRED800015	PRV22331500.1	28110305
	COREPRV022		PRED800022	PRV22332200.1	28110316
Connections	Compression	Compression	Compression	Compression	Compression
Pressure Gauge	Included	Included	Optional	Optional	Separate
Material	DZR Brass Chrome Plated	DZR Brass Chrome Plated	DZR Brass	DZR Brass	Low Lead Brass Body, DZR Brass unions
Approvals	WRAS	WRAS	WRAS	WRAS	WRAS
Set Range	1 to 5.5 Bar	1 to 6 Bar	1 to 6 Bar	0.8 to 6 Bar	1 to 6 Bar
Default Setting	3 Bar	3 Bar	3 Bar	3 Bar	not stated
Max Inlet Pressure	16 Bar	16 Bar	16 Bar	16 Bar	16 Bar
Max Working Temp	80 °C	80 °C	80 °C	80 °C	80 °C

Disclaimer

The information is believed to be correct at the time of publication; however, the document is for guideline use only. For complete accuracy, always check the product with a CORE representative. Missing information was either not available or disclosed. It is your responsibility that any product meets the necessary requirements. Any reliance placed upon this information will be totally at the user's risk.



	CORE TBV	Albion 32 TBV	Reliance TREG TBV	Altecnic 116 TBV	BOSS 206TD TBV
MPN	CORETBV32015	AATBV32050	TREG100060	116240	20520023
	CORETBV32020	AATBV32075	TREG100065	116250	20520034
	CORETBV32025	AATBV32100	Sharkbite version	116260	20520045
Connections	Female Bsp	Female Bsp	Female Bsp/Sharkbite	Female Bsp	Female Bsp
Temperature Gauge	Included	Included	Included	Optional	Included
Material	DZR Brass CW602N	DZR Brass CW602N	DZR Brass	DZR Brass CW724R (Low Lead)	DZR Brass CW724R (Low Lead)
Approvals	WRAS	WRAS	WRAS	WRAS	WRAS
Anti Legionella Temp	70°C	70°C	70°C	70°C	70°C
Max Inlet Pressure	25 Bar (static)	25 Bar (static)	10 Bar (working)	16 Bar (working)	16 Bar (working)
Working Temp Range	40°C to 60°C	40°C to 60°C	40°C to 65°C	35°C to 60°C	35°C to 60°C
Max Temp	90°C	90°C	Not Stated	90°C	90°C
Other			Pre-Insulated	Removable Cartridge	Removable Cartridge

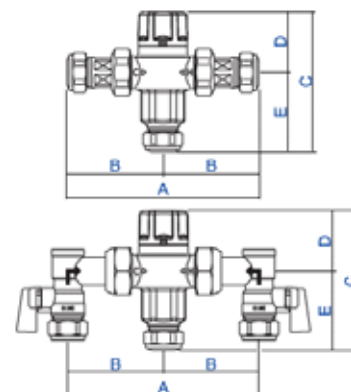
VALVES

TMV & Product Selector

TMV

The CORE 5213 thermostatic mixing valve maintains the domestic hot water supplied to the user at a constant and safe temperature, when variations in the hot and cold water supply conditions and draw off flow rates occur. The fail-safe design shuts off the mixed water flow automatically in the event of disruption in the hot or cold water supply to the valve.

Product Size	A	B	C	D	E	Weight
15mm (2 in 1)	141mm	67.50mm	99mm	43mm	56mm	0.57kg
22mm (2 in 1)	150mm	75mm	100mm	43mm	57mm	0.79kg
15mm (4 in 1)	120mm	60mm	99mm	43mm	56mm	0.77kg
22mm (4 in 1)	136mm	68mm	100mm	43mm	57mm	1kg



TMV

Product Code	Description	Working Temp Range	Max Pressure
CORETMV015	15mm CORE 5213 TMV2/3 - 2 in 1	Up to 85°C	10 Bar
CORETMV022	22mm CORE 5213 TMV2/3 - 2 in 1	Up to 85°C	10 Bar
CORETMV015MX	15mm CORE 5213 TMV2/3 MX Valve - 4 in 1	Up to 85°C	10 Bar
CORETMV022MX	22mm CORE 5213 TMV2/3 MX Valve - 4 in 1	Up to 85°C	10 Bar



	CORE 5213 TMV	Albion 33 TMV	Reliance Easifit	Reliance Heatguard	Intatec 400CP	Pegler 402	BOSS TMV
MPN	CORETMV015 CORETMV022 CORETMV015MX CORETMV022MX	ATMV3315 ATMV3322	HEAT112010 HEAT112015	HEAT110614 HEAT110624	40015CP 40022CP	PEG402015 PEG402022	86345001 86345012
Connections	Compression	Compression	Compression	Compression	Compression	Compression	Compression
Material	DZR Brass Chrome Plated	DZR Brass Chrome Plated	DZR Brass Chrome Plated	DZR Brass Nickel Plated	DZR Brass Nickel Plated	DZR Brass Chrome Plated	DZR Brass Chrome Plated
D 08	Yes	No	Yes	Yes	Yes	Yes	Yes
Max Static Pressure	10 Bar	10 Bar	10 Bar	16 Bar	10 Bar	12 Bar	10 Bar
Max Inlet Temp	85°C	65°C	85°C	85°C	85°C	85°C	85°C
Accuracy	+/- 2%	+/- 2%	+/- 2%	+/- 2%	+/- 2%	+/- 2%	+/- 2%
Standards/Approvals	TMV 2 & 3 Reg 4 (WRAS) BS7942 NHS/DoH D 08	TMV 2 & 3	TMV 2 & 3	TMV 2 & 3	TMV 2 & 3	TMV 2 & 3	TMV 2 & 3
Max Pressure Differential	5:1	10:1	10:1	10:1	5:1	5:1	5:1

Disclaimer

The information is believed to be correct at the time of publication; however, the document is for guideline use only. For complete accuracy, always check the product with a CORE representative. Missing information was either not available or disclosed. It is your responsibility that any product meets the necessary requirements. Any reliance placed upon this information will be totally at the user's risk.

CORE[®]

Core values, quality products

Coming Soon...

Non Return
Valve

Commission
Valves

Backflow
Prevention
Valve

Safety
Valves

Bronze Gate
Valves

Ductile
Iron Globe
Valves

Ductile Iron
Gate Valves

Radiator
Valves

Bronze
Globe
Valves

PUMPS & PRESSURISATION

A range of pressurisation equipment all manufactured to industry leading standards is available. The range is constantly developing to ensure product performance meets project requirements.



Pump Flexibles & Expansion Joints

CORE pump flexibles are installed to absorb vibration and noise levels caused by the system itself upon which they are fitted. These are suitable for use on systems carrying both chilled & heated water. The product is **not** suitable for use with potable water, water with oil additives, compressed air or food applications. The product has a design life up to 10 years and is warranted for a period of 12 months from supply.

Non rubber expansion joints can be used when the temperature, pressure or media being transported prevents the use of rubber bellows.

Plain Copper End



Product Code	Description	Working Temp Range
FBCU015	15mm CORE AX3 St/Steel Flexible Bellow Plain Copper End	90°C 6 Bar
FBCU022	22mm CORE AX3 St/Steel Flexible Bellow Plain Copper End	90°C 6 Bar
FBCU028	28mm CORE AX3 St/Steel Flexible Bellow Plain Copper End	90°C 6 Bar
FBCU035	35mm CORE AX3 St/Steel Flexible Bellow Plain Copper End	90°C 6 Bar
FBCU042	42mm CORE AX3 St/Steel Flexible Bellow Plain Copper End	90°C 6 Bar
FBCU054	54mm CORE AX3 St/Steel Flexible Bellow Plain Copper End	90°C 6 Bar

Screwed Axial



Product Code	Description	Working Temp Range
AX325015	15nb CORE AX3 Screwed Axial Bellow 25mm Movement	120°C 10 Bar
AX325020	20nb CORE AX3 Screwed Axial Bellow 25mm Movement	120°C 10 Bar
AX325025	25nb CORE AX3 Screwed Axial Bellow 25mm Movement	120°C 10 Bar
AX325032	32nb CORE AX3 Screwed Axial Bellow 25mm Movement	120°C 10 Bar
AX325040	40nb CORE AX3 Screwed Axial Bellow 25mm Movement	120°C 10 Bar
AX325050	50nb CORE AX3 Screwed Axial Bellow 25mm Movement	120°C 10 Bar

Union



Product Code	Description	Working Temp Range
FBS015	15nb CORE Flexible Bellow Bsp Union	-10°C to 90°C
FBS020	20nb CORE Flexible Bellow Bsp Union	-10°C to 90°C
FBS025	25nb CORE Flexible Bellow Bsp Union	-10°C to 90°C
FBS032	32nb CORE Flexible Bellow Bsp Union	-10°C to 90°C
FBS040	40nb CORE Flexible Bellow Bsp Union	-10°C to 90°C
FBS050	50nb CORE Flexible Bellow Bsp Union	-10°C to 90°C



PN6 Untied

Product Code	Description	Working Temp Range
FB6032	32nb CORE Flexible Bellow PN6 Untied	-10°C to 90°C
FB6040	40nb CORE Flexible Bellow PN6 Untied	-10°C to 90°C
FB6050	50nb CORE Flexible Bellow PN6 Untied	-10°C to 90°C
FB6065	65nb CORE Flexible Bellow PN6 Untied	-10°C to 90°C
FB6080	80nb CORE Flexible Bellow PN6 Untied	-10°C to 90°C
FB6100	100nb CORE Flexible Bellow PN6 Untied	-10°C to 90°C

Note: Units should not be installed on pumps located on inertia bases



PN16 Untied

Product Code	Description	Working Temp Range
FB16032	32nb CORE Flexible Bellow PN16 Untied	-10°C to 90°C
FB16040	40nb CORE Flexible Bellow PN16 Untied	-10°C to 90°C
FB16050	50nb CORE Flexible Bellow PN16 Untied	-10°C to 90°C
FB16065	65nb CORE Flexible Bellow PN16 Untied	-10°C to 90°C
FB16080	80nb CORE Flexible Bellow PN16 Untied	-10°C to 90°C
FB16100	100nb CORE Flexible Bellow PN16 Untied	-10°C to 90°C
FB16125	125nb CORE Flexible Bellow PN16 Untied	-10°C to 90°C
FB16150	150nb CORE Flexible Bellow PN16 Untied	-10°C to 90°C

Note: Units should not be installed on pumps located on inertia bases



PN16 Tied

Product Code	Description	Working Temp Range
FBT16032	32nb CORE Flexible Bellow PN16 Tied	-10°C to 90°C
FBT16040	40nb CORE Flexible Bellow PN16 Tied	-10°C to 90°C
FBT16050	50nb CORE Flexible Bellow PN16 Tied	-10°C to 90°C
FBT16065	65nb CORE Flexible Bellow PN16 Tied	-10°C to 90°C
FBT16080	80nb CORE Flexible Bellow PN16 Tied	-10°C to 90°C
FBT16100	100nb CORE Flexible Bellow PN16 Tied	-10°C to 90°C
FBT16125	125nb CORE Flexible Bellow PN16 Tied	-10°C to 90°C
FBT16150	150nb CORE Flexible Bellow PN16 Tied	-10°C to 90°C
FBT16200	200nb CORE Flexible Bellow PN16 Tied	-10°C to 90°C
FBT16250	250nb CORE Flexible Bellow PN16 Tied	-10°C to 90°C
FBT16300	300nb CORE Flexible Bellow PN16 Tied	-10°C to 90°C

Potable

Potable water expansion vessels for use in domestic and commercial sealed chilled and hot water systems.

Advantages

- Nitrogen gas filling for longer retention of pre-charge
- With single threaded steel connection and plastic insert (no flow-through function)

Technical Specifications

- Maximum working pressure: 10 Bar (8 Bar for 750L)
- Min/Max working temperature (bladder): -10/ 100 °C (70 °C for 1000L)
- In accordance with Pressure Equipment Directive 2014/68/EU
- Suitable for addition of glycol-based antifreeze up to 50%
- Coated aluminium (RAL 9006)
- 35 - 1000L as standard come with feet

Expansion Vessel (Potable)



Product Code	Description	Working Temp Range	Max Pressure
CPV8L	8L CORE Potable Expansion Vessel	-10°C to 100°C	10 Bar
CPV12L	12L CORE Potable Expansion Vessel	-10°C to 100°C	10 Bar
CPV18L	18L CORE Potable Expansion Vessel	-10°C to 100°C	10 Bar
CPV24L	24L CORE Potable Expansion Vessel	-10°C to 100°C	10 Bar
CPV35L	35L CORE Potable Expansion Vessel	-10°C to 100°C	10 Bar
CPV50L	50L CORE Potable Expansion Vessel	-10°C to 100°C	10 Bar
CPV80L	80L CORE Potable Expansion Vessel	-10°C to 100°C	10 Bar
CPV100L	100L CORE Potable Expansion Vessel	-10°C to 100°C	10 Bar
CPV150L	150L CORE Potable Expansion Vessel	-10°C to 100°C	10 Bar
CPV200L	200L CORE Potable Expansion Vessel	-10°C to 100°C	10 Bar
CPV300L	300L CORE Potable Expansion Vessel	-10°C to 100°C	10 Bar
CPV500L	500L CORE Potable Expansion Vessel	-10°C to 100°C	10 Bar
CPV750L	750L CORE Potable Expansion Vessel	-10°C to 100°C	8 Bar
CPV1000L	1000L CORE Potable Expansion Vessel	-10°C to 70°C	10 Bar

Please note: *Between 35 - 1000L come with feet*



Heating

For use on domestic and commercial hot water systems with each vessel being factory tested before leaving the factory.

For sealed heating (acc. to EN12828) and cooling installations.

When the temperature in the installation rises, the system water will expand. The 'expansion water' is stored temporarily in the expansion vessel to keep the pressure in the installation at the correct level. Each vessel is factory tested.

Advantages

- The thread of the system connection is uncoated, ensuring problem free connection.
- The fixed bag-type diaphragm prevents the water from coming into contact with the bare steel of the vessel.
- Nitrogen gas filling for longer maintenance of pre-pressure.

Technical Specifications

- Maximum working pressure: 6 Bar
- Vessels in accordance with EN13831
- Min. / max. temperature diaphragm: -10 / 70 °C
- In accordance with Pressure Equipment Directive 2014/68/EU
- Suitable for systems with a maximum system temperature of 120 °C
- Diaphragm: EPDM
- All welded construction & Zinc plated flange
- Suitable for addition of glycol-based antifreeze up to 50% and ethanol-based antifreeze up to 30%
- Red (RAL 3002) epoxy powder coating
- 35 – 1000L as standard come equipped with legs



Expansion Vessel (Heating)

Product Code	Description	Working Temp Range	Max Pressure
CHV8L	8L CORE Heating Expansion Vessel	-10°C to 70°C	6 Bar
CHV12L	12L CORE Heating Expansion Vessel	-10°C to 70°C	6 Bar
CHV18L	18L CORE Heating Expansion Vessel	-10°C to 70°C	6 Bar
CHV25L	25L CORE Heating Expansion Vessel	-10°C to 70°C	6 Bar
CHV35L	35L CORE Heating Expansion Vessel	-10°C to 70°C	6 Bar
CHV50L	50L CORE Heating Expansion Vessel	-10°C to 70°C	6 Bar
CHV80L	80L CORE Heating Expansion Vessel	-10°C to 70°C	6 Bar
CHV100L	100L CORE Heating Expansion Vessel	-10°C to 70°C	6 Bar
CHV150L	150L CORE Heating Expansion Vessel	-10°C to 70°C	6 Bar
CHV200L	200L CORE Heating Expansion Vessel	-10°C to 70°C	6 Bar
CHV300L	300L CORE Heating Expansion Vessel	-10°C to 70°C	6 Bar
CHV400L	400L CORE Heating Expansion Vessel	-10°C to 70°C	6 Bar
CHV500L	500L CORE Heating Expansion Vessel	-10°C to 70°C	6 Bar
CHV600L	600L CORE Heating Expansion Vessel	-10°C to 70°C	6 Bar
CHV800L	800L CORE Heating Expansion Vessel	-10°C to 70°C	6 Bar
CHV1000L	1000L CORE Heating Expansion Vessel	-10°C to 70°C	6 Bar

Note: Between 35 - 1000L come with legs

MINI

Suitable for maintaining pressure in large domestic and small commercial sealed heating systems, chilled water systems, refrigeration units, and industrial cooling systems. Mini units are exceptionally easy to install and commission, housed in a compact and robust enclosure suitable for wall mounting.

Features

- Suitable for sealed systems of up to 6,000 litres
- Single (duty) or Twin (duty-standby) pump options
- 3 Bar cold fill pressure
- 2 litre tank capacity
- Automated system top-up
- WRAS approved high flow fill valve
- Left or Right outlet configurable with flexible hose (supplied)
- Category 5 backflow protection



Mini

Product Code	Description	Sealed System Capacity	Max Cold Fill Pressure
COREMINI130	CORE Press Unit 130 MINI Wall Hung (single pump)	6,000 litres	3 Bar
COREMINI230	CORE Press Unit 230 MINI Wall Hung (twin pump)	6,000 litres	3 Bar

MIDI

Suitable for maintaining pressure in large domestic and commercial sealed heating systems, chilled water systems, refrigeration units, and industrial cooling systems. Midi units feature continuously rated brass peripheral pumps and are exceptionally easy to install and commission, suitable for either floor or wall mounting.

Features

- Suitable for sealed systems of up to 300,000 litres
- Single (duty) or Twin (duty-standby) pump options
- 3.5 / 4.1 Bar cold fill pressure
- 8 litre tank capacity
- Automated system fill & top-up
- WRAS approved high flow fill valve
- Left or Right inlet & outlet configurable with flexible hose (supplied)
- Category 5 backflow protection



Midi

Product Code	Description	Sealed System Capacity	Max Cold Fill Pressure
COREMIDI135	CORE Press Unit 135 MIDI Wall/Floor (single pump)	300,000 litres	3.5 Bar
COREMIDI150	CORE Press Unit 150 MIDI Wall/Floor (single pump)	300,000 litres	4.1 Bar
COREMIDI235	CORE Press Unit 235 MIDI Wall/Floor (twin pump)	300,000 litres	3.5 Bar
COREMIDI250	CORE Press Unit 250 MIDI Wall/Floor (twin pump)	300,000 litres	4.1 Bar

MAXI 135 & MAXI 175

The microprocessor (HP microprocessor in the 175 model) controlled single pump is designed with specifiers and installers in mind. The unit is exceptionally easy to install and commission, and is housed in a compact and robust enclosure for floor or wall mounting. Suitable for maintaining pressure in large domestic and commercial sealed heating systems, chilled water systems, refrigeration units, and industrial cooling systems.

Features

- Suitable for sealed systems of up to 300,000 litres
- Up to 3.4 Bar cold fill pressure (up to 7 Bar in the 175 model)
- Unique Pressure Logic™ microprocessor
- Single (duty) pump
- Automated system fill & top-up
- High quality bronze peripheral pump
- Category 5 backflow protection



MAXI 135 & 175 (single pump)

Product Code	Description	Sealed System Capacity	Max Cold Fill Pressure
COREMAXI135	CORE Press Unit 135 MAXI Floor (single pump)	300,000 litres	3.4 Bar
COREMAXI175	CORE Press Unit 175 MAXI Floor (single pump)	300,000 litres	7 Bar

MAXI 235 & 275 (twin pump)

The microprocessor (HP microprocessor in the 275 model) controlled twin pump is designed with specifiers and installers in mind. The unit is exceptionally easy to install and commission, and is housed in a compact and robust enclosure for floor or wall mounting. Suitable for maintaining pressure in large domestic and commercial sealed heating systems, chilled water systems, refrigeration units, and industrial cooling systems.

Features

- Suitable for sealed systems of up to 300,000 litres
- Up to 3.4 Bar cold fill pressure (up to 7 Bar in the 275 model)
- Unique Pressure Logic™ microprocessor
- Twin (duty-standby) pump
- Automated system fill & top-up
- High quality bronze peripheral pump
- Category 5 backflow protection



MAXI 235 & 275 (twin pump)

Product Code	Description	Sealed System Capacity	Max Cold Fill Pressure
COREMAXI235	CORE Press Unit 235 MAXI PLUS Floor (twin pump)	300,000 litres	3.4 Bar
COREMAXI275	CORE Press Unit 275 MAXI PLUS Floor (twin pump)	300,000 litres	7 Bar

CORE[®]

Core values, quality products

Coming Soon...

Booster Sets



WATER TREATMENT

CORE water treatment range offers advanced solutions designed to meet all hygiene, cleaning & protection needs for commercial heating & chilled systems. All the high-performance chemical formulations are designed to increase system performance whilst reducing maintenance, running costs, energy consumption, water wastage and carbon emissions.



WATER TREATMENT

Quick Test Kit & Dosing Calculator

Fast and accurate testing of inhibitor concentration

The CORE Inhibitor Quick Test Kit delivers fast and accurate testing of inhibitor concentration within commercial heating and chilled systems. After taking a system water sample, the test strips only need to be dipped in the sample for a second, prior to revealing the results after just ten seconds.

- Fast and accurate testing of CORE inhibitor levels in heating and chilled systems
- On-site results within 10 seconds
- Colour scale included on bottle
- Contains 50 test strips



CORE Inhibitor Quick Test Kits

Size	Product Code
50 Strips	COREINHIBQTS

Inhibitor Dosage Calculator

Dosing advice for all chemicals (except Glycol)

1. Take the combined kW output of the Boilers/Chillers.
2. For a heating system, multiply the kW output by 12 to give an estimated system volume in litres, then multiply by 0.40%.
e.g. for a 500kW heating system: $500 \times 12 = 6,000 \text{ litres} \times 0.40\% = 24$. Therefore, **ADD 24 litres** of CORE Inhibitor.
3. For a chilled/cooling system, multiply the kW output by 15 to give an estimated system volume in litres, then multiply by 0.40%.
e.g. for a 250kW chilled system: $250 \times 15 = 3,750 \text{ litres} \times 0.40\% = 15$. Therefore, **ADD 15 litres** of CORE Inhibitor.

The concentration of CORE Glycol Anti-Freeze can be adjusted for lower levels of freeze protection, reducing the freezing point of water in direct proportion to its concentration within the system:

- 25% concentration provides protection down to -11°C
 - 2.5L of Glycol Anti-Freeze & 7.5L of water for every 10L of system water
- 30% concentration provides protection down to -14°C
 - 3.0L of Glycol Anti-Freeze & 7.0L of water for every 10L of system water
- 35% concentration provides protection down to -17°C
 - 3.5L of Glycol Anti-Freeze & 6.5L of water for every 10L of system water
- 40% concentration provides protection down to -22°C
 - 4.0L of Glycol Anti-Freeze & 6.0L of water for every 10L of system water

Please note: Minimum dose for full corrosion protection is 25% concentration

No need for system shutdown

Our CORE Dosing Pot is a high-quality stainless steel vessel which is fatigue resistant due to its design. The Pot fully complies with the latest BSRIA BG50/2021 recommendations regarding avoiding dead legs.

The unit is supplied with loose components, so connections can be fitted in an orientation best suited to the system.

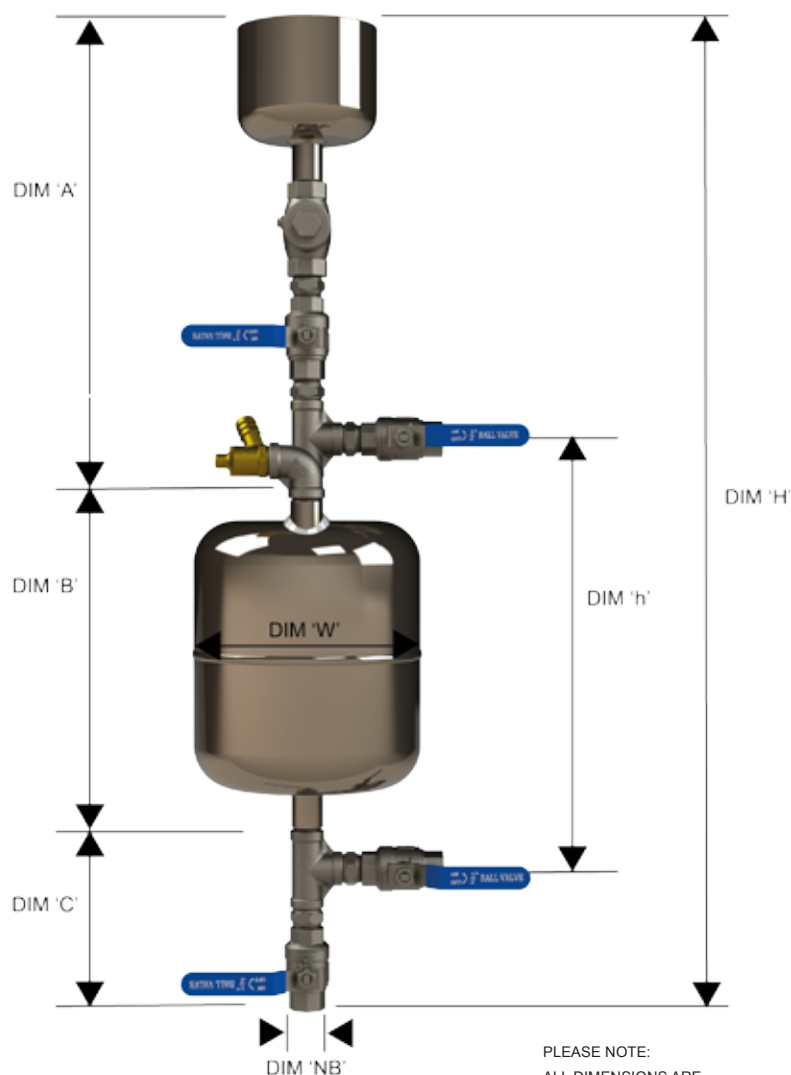
Sizing and Installation

Dosing pots are generally installed in closed systems to enable water treatments and other chemicals to be added to the system without the need to shut a system down, or part thereof.

The size of the dosing pot installed in a system is not critical as multiple doses of chemicals can be put into the system to reach the correct concentration.

The benefits of using a smaller unit are that it is easier to physically handle and also allows for more accurate dosing. However, the time on site for performing multiple doses has to be considered.

This factor should influence your decision when selecting dosing pots.



PLEASE NOTE:
ALL DIMENSIONS ARE
FOR GUIDANCE ONLY.

SIZE	Connection Size (NB)	DIM A	DIM B	DIM C	DIM W	DIM H	DIM h	Weight	Max Working Pressure
3.5L	1/2"	285mm	260mm	130mm	162mm	675mm	310mm	9kg	10 Bar
6L	1/2"	285mm	260mm	130mm	215mm	675mm	310mm	14kg	10 Bar
11L	1/2"	285mm	410mm	130mm	215mm	825mm	460mm	21kg	10 Bar
18L	1/2"	285mm	460mm	130mm	260mm	875mm	510mm	30kg	7 Bar
25L	1/2"	285mm	590mm	130mm	260mm	1005mm	640mm	40kg	7 Bar

CORE Stainless Steel Dosing Pot

Description

Product Code

CORE 3.5L Stainless Steel Dosing Pot	DPSS035C
CORE 6L Stainless Steel Dosing Pot	DPSS06C
CORE 11L Stainless Steel Dosing Pot	DPSS11C
CORE 18L Stainless Steel Dosing Pot	DPSS18C
CORE 25L Stainless Steel Dosing Pot	DPSS25C

WATER TREATMENT

Air/Dirt Separator

Flanged Microbubble Air & Dirt Separator

For use in sealed heating and cooling systems. CORE Air & Dirt Separators protect against damage caused by the deposit of dirt particles, and large amounts of dissolved and undissolved air.

Advantages of using Air & Dirt Separators

Reduction in:

- Corrosion of pipe and fixings
- Dependence on chemicals
- Unwanted dirt build up in radiators, vessels & pipe

CORE Air & Dirt separators are essential when refurbishing older systems or when an open system is converted to a closed system.

Features include:

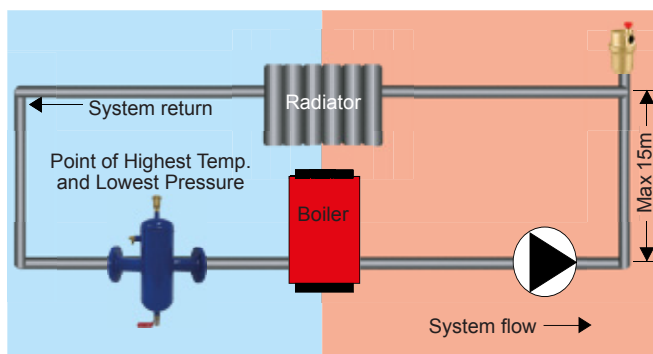
- Flanged connection EN 1092-1 PN16
- Extremely low flow resistance
- Flow Rate up to 1.5 m/s
- 5 Year Warranty

Specifications:

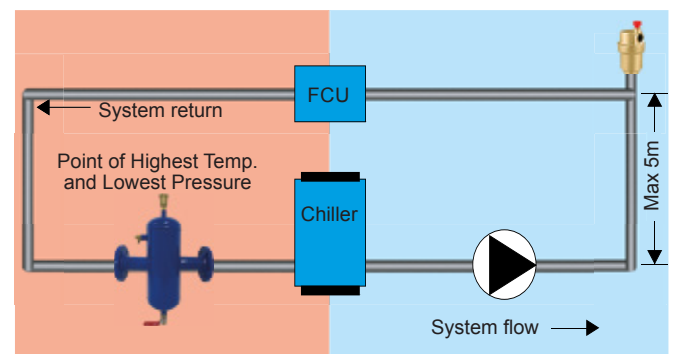
- Maximum working pressure: 10 bar
- Mild steel body with stainless steel filament internals
- Brass valves, automatic air vent & blow down valve
- Suitable for systems with a maximum flow temperature of 110°C
- Suitable for addition of glycol-based antifreeze up to 50%
- In accordance with Pressure Equipment Directive 2014/68/EU Cat SEP and Pressure Equipment (Safety) Regulations 2016



System Set Up Hot Water



System Set Up Cold Water



CORE Air and Dirt Separators

Description

Product Code

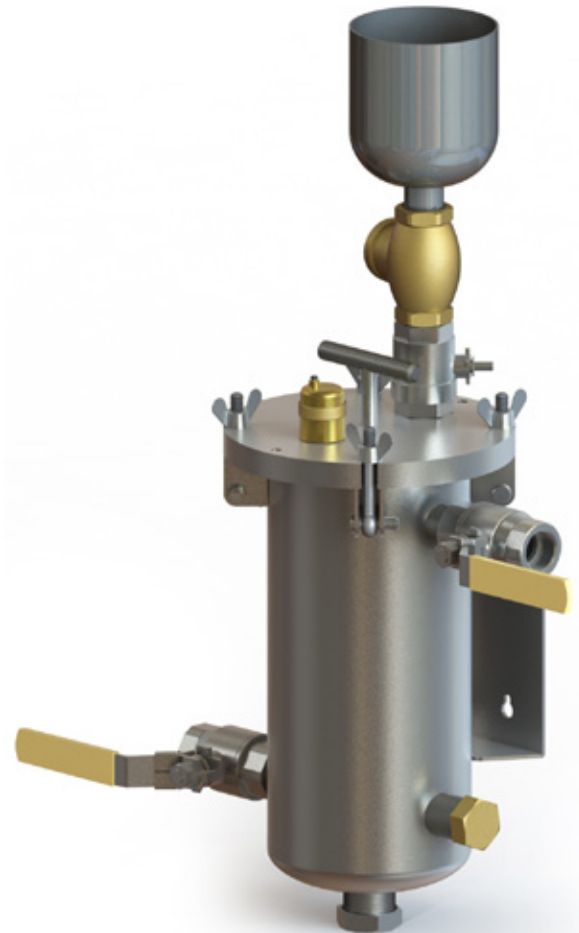
CORE 50nb Combined Air & Dirt Separator PN16	CAD050C
CORE 65nb Combined Air & Dirt Separator PN16	CAD065C
CORE 80nb Combined Air & Dirt Separator PN16	CAD080C
CORE 100nb Combined Air & Dirt Separator PN16	CAD100C
CORE 125nb Combined Air & Dirt Separator PN16	CAD125C
CORE 150nb Combined Air & Dirt Separator PN16	CAD150C
CORE 200nb Combined Air & Dirt Separator PN16	CAD200C

Pipe Size	Length L	Body Dia D	Height H	Flange	Weight (Empty)
50mm	430mm	168mm	600mm	PN16	20kg
65mm	430mm	168mm	600mm	PN16	22kg
80mm	490mm	220mm	800mm	PN16	35kg
100mm	490mm	220mm	800mm	PN16	40kg
125mm	630mm	325mm	970mm	PN16	65kg
150mm	630mm	325mm	970mm	PN16	100kg

Stainless 'Easy Clean' Side Stream Filter

The filter unit is suitable for water applications requiring a side stream filtration unit, which removes dirt and debris from the system, maintaining system performance. The unit has a low pressure drop design and requires minimal assembly time, with the choice of inlet and outlet positions.

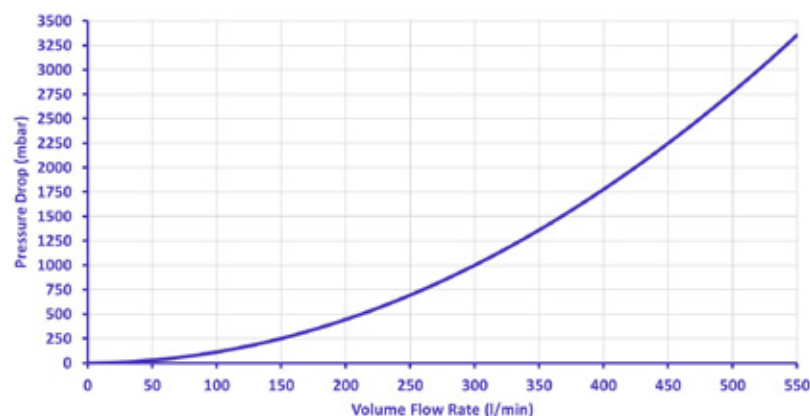
The unit benefits from a non-ferrous reusable stainless steel mesh filter, meaning no replacement filter cartridge costs are required post-purchase. The easy-to-assemble unit only contains 1 magnet, making it simple and easy to clean while still capturing passing ferrous contamination. **Anti-bacterial filtration is not required**, because simply adding CORE biocide to the system treats the entire system.



Features

Manufacturing Location	UK
Body Material	SS304
Inlet and Outlet Pipe	1"
Automatic Air Vent	✓
Operational Mode	Sidestream
Install Orientation	Vertical
Magnet Type	Single 'Easy Clean' Rod
Magnet In Contact With Fluid	✓
Maximum Flow Rate	100 l/min
Maximum System Volume	unlimited
Max Operating Pressure	6 Bar
Max Operating Temperature	90° C
Non-Ferrous Filtration	✓
Non-Ferrous Filtration Method	Reusable Stainless Steel Mesh
Tundish with Non-Return Valve	✓
Isolation Valves	✓
Additional Consumables Required	None
Drain Plug	✓
Warranty	10 Year
Maximum Capture On Magnet	1815g

Pressure Drop Curve



Inhibitor



Leading corrosion protection

CORE Inhibitor prevents system corrosion and limescale deposition by passivating and protecting bare metal surfaces in commercial heating, chilled & condenser systems, contributing to a longer system life and improved system efficiencies. Our CORE Inhibitor contains a pH buffer to maintain a neutral system water pH.

- High performance heating, chilled & condenser system protection
- Prevents system corrosion & limescale deposition
- Helps to increase & maintain system efficiencies
- Enhanced protection in hard & soft water areas
- Concentrated formula: *Treats system volume at 0.4% dosage rate – 10L treats 2,500L*
- Compatible with all common system metals & materials
- Helps to reduce CO₂ emissions
- Environmentally friendly, non-toxic formula



CORE Inhibitor

Size	Product Code
5L	COREINHIB5L
10L	COREINHIB10L
20L	COREINHIB20L
1000L	COREINHIB1000L

Dual Biocide

High performance biocide and fungicide

CORE Dual Biocide has been specifically designed to prevent the formation & growth of bacterial contamination, algae & micro-organisms in commercial heating, underfloor heating, low temperature & chilled systems. CORE Dual Biocide contains two, separate active ingredients, making it more effective than a single biocidal treatment.

- Concentrated dual biocide for heating, chilled & condenser systems
- Prevents the formation & growth of bacterial contamination
- Effective against Legionella, Pseudomonas, NRB & SRB bacteria
- Kills fungi & algae
- Compatible with all common system metals & materials
- Non-corrosive, concentrated formula
- Concentrated formula: *Treats system volume at 0.4% dosage rate – 10L treats 2,500L*
- Effective up to 60°C
- Compatible with all CORE range chemicals



CORE Dual Biocide

Size	Product Code
10L	COREDUALBIOCIDE10L
20L	COREDUALBIOCIDE20L

Leave-in Cleaner

No drain, no flush formula

CORE Leave-In Cleaner has been specifically designed to lift & mobilise magnetic & non-magnetic system contaminants (including biofilms), helping to promote their capture via a magnetic & non-magnetic system filter which must be present on any system that this product is used to dose.

CORE Leave-In Cleaner can remain in the system, with no need to drain & flush after treatment.

- High performance heating, chilled & condenser system protection
- Prevents system corrosion & limescale deposition
- Helps to increase & maintain system efficiencies
- Enhanced protection in hard & soft water areas
- Concentrated formula: *Treats system volume at 0.4% dosage rate – 10L treats 2,500L*
- Compatible with all common system metals & materials
- Helps to reduce CO₂ emissions
- Environmentally friendly, non-toxic formula



CORE Leave-in Cleaner

Size	Product Code
10L	CORECLEANER10L
20L	CORECLEANER20L

Heavy-Duty Cleaner

Advanced, high strength chemical cleaner

CORE Heavy-Duty Cleaner has been specifically designed for the rapid cleaning of all heating, chilled and condenser systems, removing system sludge, debris and scale. CORE Heavy-Duty Cleaner can be left in the system for up to 7 days only. The system should then be thoroughly drained & flushed before refilling with clean system water. Immediate dosing of CORE INHIBITOR should then be carried out to fully protect the system.

- Heavy-duty cleaner for heating, chilled & condenser systems
- Removes system sludge, debris & scale
- Helps restore system performance & efficiencies
- Starts to work as quickly as one hour after application
- Can be left in the system for up to 7 days
- Concentrated formula: *Treats system volume at 0.4% dosage rate – 10L treats 2,500L*
- Compatible with all CORE range chemicals



CORE Heavy Duty Cleaner

Size	Product Code
10L	COREHDCLEANER10L

System Cleaner

Rapid, powerful chemical cleaner

CORE System Cleaner has been specifically designed for cleaning new & existing heating, chilled and condenser systems, removing system sludge, debris and scale. For maximum flexibility, CORE System Cleaner can be left in the system for up to 28 days. The system should then be thoroughly drained and flushed before refilling with clean system water. Immediate dosing of CORE INHIBITOR should then be carried out to fully protect the system.

- Powerful cleaner for heating, chilled & condenser systems
- Removes system debris, scale, flux & oils
- Helps restore system performance & efficiencies
- Includes CORE INHIBITOR protection to protect bare metal surfaces during cleaning
- Can be left in the system for up to 28 days
- Concentrated formula: *Treats system volume at 0.4% dosage rate – 10L treats 2,500L*
- Compatible with all CORE range chemicals
- Helps to reduce CO₂ emissions
- Environmentally friendly, non-toxic formula



CORE System Cleaner

Size	Product Code
10L	CORESUSCLEANER10L

Glycol Anti-Freeze



High performance anti-freeze and protector

CORE Glycol Anti-Freeze is a monopropylene, glycol-based antifreeze, designed to prevent freezing in all types of water which incorporates our CORE INHIBITOR, helping to protect underfloor heating systems, chillers, boilers and their associated chilling & heating systems against corrosion & scale formation and maximising the heat transfer properties of the system. CORE Glycol Anti-Freeze offers protection down to -22°C at 40% concentration.

- Monopropylene Glycol Anti-Freeze for chilled & condenser systems
- Low toxicity, food & beverage grade glycol
- Includes CORE INHIBITOR protection to help protect against corrosion & limescale formation
- Helps to increase & maintain system performance & efficiencies
- Concentrated formula
- Compatible with all common system metals & materials
- Protection down to -22°C at 40% concentration
- Helps to reduce CO₂ emissions
- Environmentally friendly, non-toxic formula

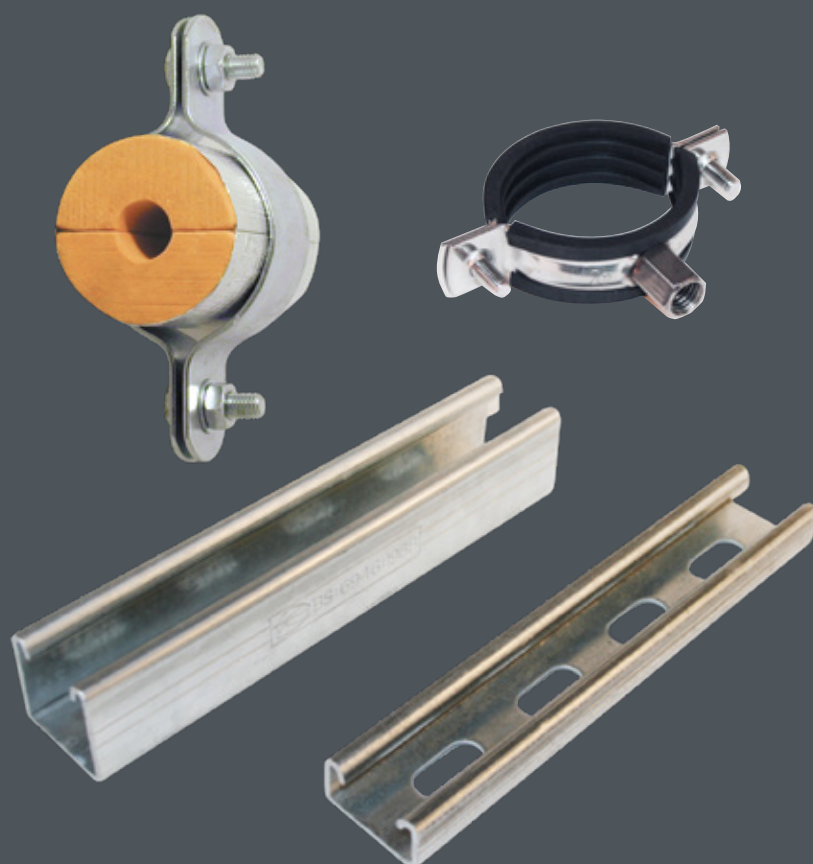


CORE Glycol Anti-Freeze

Size	Product Code
20L	COREGLYCOL20L

PIPE SUPPORT

A range of essential products is available to support installing metal and plastic pipe systems. The products are stocked heavily and backed up by Smith Brothers' service and expertise, our chosen distribution partner. Their staff members are always on hand to advise on the products most suitable to support your pipe system applications.



CORE offer a comprehensive range of channel lengths in 3 and 6 metres to BS6946:1988 (British Standard specification for metal channel cable support systems) which is available as slotted and plain channel lengths.

Available channel sizes are 41 x 21mm, 41 x 41mm and 41 x 82mm (back-to-back channel) profiles. These are available in standard gauge (2.5mm) and light gauge (1.6mm) thickness for slotted channel, except in the back to back product option. All slotted channel length profiles have full end slots with a pre-galvanised finish.



Light Slotted

Size (mm)	Length (m)	Product Code
41 x 21 x 1.6	3	TSS4213M
41 x 21 x 1.6	6	TSS4216M
41 x 41 x 1.6	3	TSS4413M
41 x 41 x 1.6	6	TSS4416M



Heavy Slotted

Size (mm)	Length (m)	Product Code
41 x 21 x 2.5	3	TSS4223M
41 x 21 x 2.5	6	TSS4226M
41 x 41 x 2.5	3	TSS4423M
41 x 41 x 2.5	6	TSS4426M



Plain

Size (mm)	Length (m)	Product Code
41 x 41 x 2.5	6	TSSP4426M



Back to Back Slotted

Size (mm)	Length (m)	Product Code
41 x 82 x 2.5	3	TSS8423MSL
41 x 82 x 2.5	6	TSS8426MSL



Back to Back Plain

Size (mm)	Length (m)	Product Code
82 x 41 x 2.5	6	TSS8426M

PIPE SUPPORT

Channel Accessories

To complement our channel lengths, CORE offer a wide range of accessories, including:

- Cantilever Arms
- Channel Nuts
- Square, Straight & Base Plates
- Angle Brackets
- Beam Clamps
- End Caps

<p>CORE Square Plate Washer TS00M08 - M8 TS00M10 - M10 TS00M12 - M12</p> <p>weight - 70grms</p>	<p>TS01 - CORE 2 Hole Plate</p> <p>weight - 145grms</p>	<p>TS02 - CORE 3 Hole Plate</p> <p>weight - 220grms</p>	<p>TS03 - CORE 4 Hole Plate</p> <p>weight - 285grms</p>	<p>TS06 - CORE 'L' Bracket</p> <p>weight - 225grms</p>	<p>TS07 - CORE 'T' Bracket</p> <p>weight - 345grms</p>
<p>TS11 - CORE 90 Degree Bracket, 2 Hole</p> <p>weight - 148grms</p>	<p>TS12 - CORE 90 Degree Bracket, 3 Hole</p> <p>weight - 230grms</p>	<p>TS14 - CORE 90 Degree Bracket, 4 Hole</p> <p>weight - 310grms</p>	<p>TS15 - CORE 90 Degree Bracket</p> <p>weight - 420grms</p>	<p>TS4521 - 41x21 CORE Window Bracket c/w Screw</p> <p>weight - 315grms</p>	<p>TS45 - 41x41 CORE Window Bracket c/w Screw</p> <p>weight - 370grms</p>
<p>TS4582 - 82x41 CORE Window Bracket c/w Screw</p> <p>weight - 470grms</p>	<p>TS44 - CORE Beamclamp 41x41 Channel</p> <p>weight - 430grms</p>	<p>TS23 - 41x41 CORE Single 'Z' Bracket</p> <p>weight - 205grms</p>	<p>TS29 - 45 Degree CORE Obtuse Angle Bracket</p> <p>weight - 240grms</p>	<p>GB31 - M10 CORE 'Z' Type Beam Clamp (10° pitch)</p> <p>weight - 155grms</p>	<p>GB32 - 41x41 CORE Double Channel Top Hat Bracket</p> <p>weight - 420grms</p>
<p>TS48 - CORE Beamclamp</p> <p>weight - 120grms</p>	<p>TS37 - CORE Base Plate Double Channel</p> <p>weight - 1310grms</p>	<p>GB39 - CORE 5 Hole Cross Plate</p> <p>weight - 645grms</p>	<p>TSDELTA - CORE Single Delta Baseplate</p> <p>weight - 1695grms</p>	<p>TSDELTA D - CORE Double Delta Baseplate</p> <p>weight - 1920grms</p>	<p>TS25 - 41x21 CORE Channel Top Hat Bracket</p> <p>weight - 290grms</p>
<p>TS26 - 41x41 CORE Channel Top Hat Bracket</p> <p>weight - 350grms</p>	<p>TS26A - 41x82 CORE Double Strut Top Hat Bracket</p> <p>weight - 530grms</p>	<p>GB42A41 - 41x41mm CORE Full Internal Channel Connector</p> <p>weight - 352grms</p>	<p>TS38 - CORE Single Base Plate, Double Fix</p> <p>weight - 645grms</p>	<p>TS39 - CORE Single Base Plate, Single Fix</p> <p>weight - 595grms</p>	<p>GB46 - CORE Channel Tee Bracket</p> <p>weight - 725grms</p>
<p>CORE Universal Cantilever Arm</p> <p>TS40150 - 150mm TS40300 - 300mm TS40450 - 450mm TS40600 - 600mm TS40750 - 750mm TS40900 - 900mm</p>	<p>CORE PVC Channel End Cap</p> <p>CEC421 - 41x21 Black CEC421W - 41x21 White CEC441 - 41x41 Black CEC441W - 41x41 White</p>	<p>CORE Channel Nut with No Spring</p> <p>TSSNM06 - M6 TSSNM08 - M8 TSSNM10 - M10 TSSNM12 - M12</p>	<p>CORE Channel Nut with Short Spring</p> <p>TSSNSM06 - M6 Short Spring TSSNSM08 - M8 Short Spring TSSNSM10 - M10 Short Spring TSSNSM12 - M12 Short Spring</p>	<p>CORE Channel Nut with Long Spring</p> <p>TSSNLM06 - M6 Long Spring TSSNLM08 - M8 Long Spring TSSNLM10 - M10 Long Spring TSSNLM12 - M12 Long Spring</p>	<p>TSPVCCS - CORE White PVC Closure Strip 3 Metre Length</p>

PIPE SUPPORT

Threaded Rod

Our BZP mild steel threaded rod, or studrod as it is often known, is available in diameters of M6 to M24, and in 1 and 3 metre lengths. We also offer pre-cut M10 threaded rod in sizes of 25mm to 200mm. The range is also completed by a series of connectors.



BZP Studrod

Size	Length (m)	Product Code
M6	1	SRM061M
M8	1	SRM081M
M10	1	SRM101M
M12	1	SRM121M
M16	1	SRM161M
M20	1	SRM201M
M24	1	SRM24
M6	3	SRM063M
M8	3	SRM083M
M10	3	SRM103M
M12	3	SRM123M
M16	3	SRM163M
M20	3	SRM203M
M24	3	SRM243M



BZP Pre Cut Stud

Size	Length (mm)	Product Code
M10	25	M1025PCS
M10	40	M1040PCS
M10	50	M1050PCS
M10	60	M1060PCS
M10	80	M1080PCS
M10	100	M10100PCS
M10	150	M10150PCS
M10	200	M10200PCS



BZP Studrod Connector

Size	Product Code
M8	SCM8
M10	SCM10
M12	SCM12
M16	SCM16



BZP Standard Eye Bolt

Size	Product Code
M10 x 80mm	IH200M10080
M10 x 150mm	IH200M10150
M10 x 300mm	IH200M10300



Ball Swivel Hanger

Size	Product Code
M10 x 15mm	6642010
M10 x 30mm	BHM10



Dual Backplate

Size	Product Code
M8/M10	DBP

Our comprehensive pipe clip offering includes a range of pressed steel lightweight clips in mild steel and stainless steel. They are suitable for steel, copper, plastic and stainless steel pipe applications. There are variations of these clips in both a rubber-lined and unlined finish. These are bossed to facilitate a hanging solution and use threaded bar in a horizontal pipework setting.



Rubber Lined Clip

Size	Bore (of boss)	Product Code
8nb (15-19mm)	M8/M10	LC008
10nb (15-19mm)	M8/M10	LC010
15nb (20-24mm)	M8/M10	LC015
20nb (26-30mm)	M8/M10	LC020
25nb (32-36mm)	M8/M10	LC025
32nb (38-43mm)	M8/M10	LC032
40nb (45-51mm)	M8/M10	LC040
50nb (60-64mm)	M8/M10	LC050
65nb (75-80mm)	M8/M10	LC065
80nb (88-92mm)	M8/M10	LC080
100nb (113mm-118mm)	M8/M10	LC100
125nb (136-140mm)	M8/M10	LC125
150nb (159-166mm)	M8/M10	LC150
200nb (215-225mm)	M8/M10	LC200
250nb (279-284mm)	M10	LC250

Rubber Lined Clip (non-standard sizes)

Size (mm)	Bore (of boss)	Product Code
53 - 59	M8/M10	LC054
63 - 67	M8/M10	LC067
81 - 87	M8/M10	LC083
99 - 105	M8/M10	LC100OD
107 - 112	M8/M10	LC108
113 - 118	M8/M10	LC114
125 - 130	M8/M10	LC125OD
145 - 152	M8/M10	LC150OD

Unlined Clip

Size	Bore (of boss)	Product Code
10nb (15-19mm)	M8/M10	UC010
15nb (20-25mm)	M8/M10	UC015
20nb (26-30mm)	M8/M10	UC020
25nb (32-36mm)	M8/M10	UC025
32nb (38-43mm)	M8/M10	UC032
40nb (47-51mm)	M8/M10	UC040
50nb (54-62mm)	M8/M10	UC050
65nb (75-80mm)	M8/M10	UC065
80nb (87-92mm)	M8/M10	UC080
100n (113-118mm)	M8/M10	UC100
125n (139-144mm)	M8/M10	UC125
150n (159-168mm)	M8/M10	UC150
200n (217-225mm)	M8/M10	UC200

Unlined Clip (non-standard sizes)

Size (mm)	Bore (of boss)	Product Code
53 - 61	M8/M10	UC054
62 - 68	M8/M10	UC067
82 - 87	M8/M10	UC081086
88 - 95	M8/M10	UC090094
99 - 105	M8/M10	UC099105
96 - 103	M8/M10	UC100OD
104 - 112	M8/M10	UC107112
125 - 135	M8/M10	UC124132
154 - 162	M8/M10	UC159166
195 - 205	M8/M10	UC200205

PIPE SUPPORT

Pipe Clips

Our pipe clips are available in many designs and finishes, choose your variation dependent on the nature of the project and specification.



Stainless Steel Clip

Size (mm)	Bore (of boss)	Product Code
15 - 19	M8/M10	SSQU018
20 - 24	M8/M10	SSQU022
25 - 28	M8/M10	SSQU028
32 - 37	M8/M10	SSQU035
40 - 44	M8/M10	SSQU040
48 - 53	M8/M10	SSQU048
54 - 57	M8/M10	SSQU054
60 - 64	M8/M10	SSQU060
67	M8/M10	SSQU067
74 - 77	M8/M10	SSQU075
89 - 91	M8/M10	SSQU090
99 - 105	M8/M10	SSQU100
107 - 112	M8/M10	SSQU110
112 - 116	M8/M10	SSQU115
138 - 142	M8/M10	SSQU125
138 - 142	M8/M10	SSQU140
148 - 152	M8/M10	SSQU150
168 - 172	M8/M10	SSQU168
215 - 225	M8/M10	SSQU215



BZP Split Band Clip

Size (nb)	Product Code
15	IH100015
20	IH100020
25	IH100025
32	IH100032
40	IH100040
50	IH100050
65	IH100065
80	IH100080
100	IH100100
125	IH100125
150	IH100150
200	IH100200
250	IH100250
300	IH100300



Blue Plastic Lined Clip with Plain Weld Stem

Size (inch)	Product Code
1/2"	SSDHCL015
3/4"	SSDHCL020
1"	SSDHCL025
1.1/2"	SSDHCL040
2"	SSDHCL050
2.1/2"	SSDHCL065
3"	SSDHCL080
4"	SSDHCL100



Blue Plastic Lined Clip

Size (inch)	Bore (of boss)	Product Code
1"	M10	SSDHCL025M10
1.1/2"	M10	SSDHCL040M10
2"	M10	SSDHCL050M10
2.1/2"	M10	SSDHCL065M10
3"	M10	SSDHCL080M10
4"	M10	SSDHCL100M10

PIPE SUPPORT

Malleable Clips

A full range of malleable iron pipe clips, clamps, brackets and backplates can be used to support steel tube to BS EN 10255/10217(formerly referred to as BS1387). These clips are available in both black and galvanised finish and are made from black iron material (Blackheart).

The term Blackheart refers to the type of malleable iron that is produced during the casting process. This is made by annealing white iron in a neutral atmosphere at a temperature of 900°C and is renowned for its strength. The British Standard for Blackheart malleable iron is BS6681:1986.



Malleable Black

Size	Product	Product Code
1/4"	BSP Blk Mall Backplate	BPBIMP
M10	Blk Mall Backplate	BPBM10
M12	Blk Mall Backplate	BPBM12
15nb	Blk Mall D/S Ring M10 Tapped	DSB015
20nb	Blk Mall D/S Ring M10 Tapped	DSB020
25nb	Blk Mall D/S Ring M10 Tapped	DSB025
32nb	Blk Mall D/S Ring M10 Tapped	DSB032
40nb	Blk Mall D/S Ring M10 Tapped	DSB040
50nb	Blk Mall D/S Ring M10 Tapped	DSB050
65nb	Blk Mall D/S Ring M12 Tapped	DSB065
80nb	Blk Mall D/S Ring M12 Tapped	DSB080
100nb	Blk Mall D/S Ring M12 Tapped	DSB100
125nb	Blk Mall D/S Ring M12 Tapped	DSB125
150nb	Blk Mall D/S Ring M12 Tapped	DSB150
8nb	Blk Mall School Board Clip	SBB008
10nb	Blk Mall School Board Clip	SBB010
15nb	Blk Mall School Board Clip	SBB015
20nb	Blk Mall School Board Clip	SBB020
25nb	Blk Mall School Board Clip	SBB025
32nb	Blk Mall School Board Clip	SBB032
40nb	Blk Mall School Board Clip	SBB040
50nb	Blk Mall School Board Clip	SBB050
65nb	Blk Mall School Board Clip	SBB065
80nb	Blk Mall School Board Clip	SBB080
100nb	Blk Mall School Board Clip	SBB100
8nb	Blk Mall Single Pipe Ring x M10	SSB008
10nb	Blk Mall Single Pipe Ring x M10	SSB010
15nb	Blk Mall Single Pipe Ring x M10	SSB015
15nb	Blk Mall Single Pipe Ring x 1/4" BSP	SSB015IMP
20nb	Blk Mall Single Pipe Ring x M10	SSB020
20nb	Blk Mall Single Pipe Ring x 1/4" BSP	SSB020IMP
25nb	Blk Mall Single Pipe Ring x M10	SSB025
32nb	Blk Mall Single Pipe Ring x M10	SSB032
40nb	Blk Mall Single Pipe Ring x M10	SSB040
50nb	Blk Mall Single Pipe Ring x M10	SSB050
65nb	Blk Mall Single Pipe Ring x M12	SSB065
80nb	Blk Mall Single Pipe Ring x M12	SSB080
100nb	Blk Mall Single Pipe Ring x M12	SSB100
125nb	Blk Mall Single Pipe Ring x M12	SSB125
150nb	Blk Mall Single Pipe Ring x M12	SSB150

Malleable Galvanised

Size	Product	Product Code
M10	Galv Mall Backplate	BPGM10
M12	Galv Mall Backplate	BPGM12
15nb	Galv Mall D/S Ring M10 Tapped	DSG015
20nb	Galv Mall D/S Ring M10 Tapped	DSG020
25nb	Galv Mall D/S Ring M10 Tapped	DSG025
32nb	Galv Mall D/S Ring M10 Tapped	DSG032
40nb	Galv Mall D/S Ring M10 Tapped	DSG040
50nb	Galv Mall D/S Ring M10 Tapped	DSG050
65nb	Galv Mall D/S Ring M12 Tapped	DSG065
80nb	Galv Mall D/S Ring M12 Tapped	DSG080
100nb	Galv Mall D/S Ring M12 Tapped	DSG100
125nb	Galv Mall D/S Ring M12 Tapped	DSG125
150nb	Galv Mall D/S Ring M12 Tapped	DSG150
8nb	Galv Mall School Board Clip	SBG008
10nb	Galv Mall School Board Clip	SBG010
15nb	Galv Mall School Board Clip	SBG015
20nb	Galv Mall School Board Clip	SBG020
25nb	Galv Mall School Board Clip	SBG025
32nb	Galv Mall School Board Clip	SBG032
40nb	Galv Mall School Board Clip	SBG040
50nb	Galv Mall School Board Clip	SBG050
65nb	Galv Mall School Board Clip	SBG065
80nb	Galv Mall School Board Clip	SBG080
100nb	Galv Mall School Board Clip	SBG100
8nb	Galv Mall Single Pipe Ring x M10	SSG008
10nb	Galv Mall Single Pipe Ring x M10	SSG010
15nb	Galv Mall Single Pipe Ring x M10	SSG015
20nb	Galv Mall Single Pipe Ring x M10	SSG020
25nb	Galv Mall Single Pipe Ring x M10	SSG025
32nb	Galv Mall Single Pipe Ring x M10	SSG032
40nb	Galv Mall Single Pipe Ring x M10	SSG040
50nb	Galv Mall Single Pipe Ring x M10	SSG050
65nb	Galv Mall Single Pipe Ring X M12	SSG065
80nb	Galv Mall Single Pipe Ring x M12	SSG080
100nb	Galv Mall Single Pipe Ring x M12	SSG100
125nb	Galv Mall Single Pipe Ring x M12	SSG125
150nb	Galv Mall Single Pipe Ring x M12	SSG150

PIPE SUPPORT

Brass Clips

Our brass range is available in metric and BSP thread sizes where applicable. Pipe clips are also referred to as, clamps, munsen rings and brackets. They are suitable for use when supporting a secure fixing for copper pipes or tube to EN 1057 (formerly referred to as BS2871 part 1:1971). The products are primarily manufactured in cast brass.



Cast Brass

Size	Product	Product Code
M10	Cast Brass Backplate Female	CBBPF
M10	Cast Brass Backplate Male	CBBPM
15mm	Cast Brass Dual Purpose Bracket 1/4" BSP	CBDPB015
22mm	Cast Brass Dual Purpose Bracket 1/4" BSP	CBDPB022
28mm	Cast Brass Dual Purpose Bracket 1/4" BSP	CBDPB028
15mm	Cast Brass D/S Ring x M10	CBDS015
22mm	Cast Brass D/S Ring x M10	CBDS022
28mm	Cast Brass D/S Ring x M10	CBDS028
35mm	Cast Brass D/S Ring x M10	CBDS035
42mm	Cast Brass D/S Ring x M10	CBDS042
54mm	Cast Brass D/S Ring x M10	CBDS054
15mm	Cast Brass Hospital Bracket	CBHB015
22mm	Cast Brass Hospital Bracket	CBHB022
28mm	Cast Brass Hospital Bracket	CBHB028
35mm	Cast Brass Hospital Bracket	CBHB035
42mm	Cast Brass Hospital Bracket	CBHB042
54mm	Cast Brass Hospital Bracket	CBHB054
15mm	Cast Brass S/B Clip	CBSB015
22mm	Cast Brass S/B Clip	CBSB022
28mm	Cast Brass S/B Clip	CBSB028
35mm	Cast Brass S/B Clip	CBSB035
42mm	Cast Brass S/B Clip	CBSB042
54mm	Cast Brass S/B Clip	CBSB054
67mm	Cast Brass S/B Clip	CBSB067
15mm	Cast Brass S/S Ring x M10	CBSS015
22mm	Cast Brass S/S Ring x M10	CBSS022
28mm	Cast Brass S/S Ring x M10	CBSS028
35mm	Cast Brass S/S Ring x M10	CBSS035
42mm	Cast Brass S/S Ring x M10	CBSS042
54mm	Cast Brass S/S Ring x M10	CBSS054
67mm	Cast Brass S/S Ring x M10	CBSS067
76mm	Cast Brass S/S Ring x M10	CBSS076
108mm	Cast Brass S/S Ring x M10	CBSS108
15mm	Pressed Brass S/B Clip	PBSB015
22mm	Pressed Brass S/B Clip	PBSB022
28mm	Pressed Brass S/B Clip	PBSB028
35mm	Pressed Brass S/B Clip	PBSB035
42mm	Pressed Brass S/B Clip	PBSB042
54mm	Pressed Brass S/B Clip	PBSB054



Chrome Plated Brass

Size	Product	Product Code
M10	Chrome Plated Female Backplate	CBBPCP
M10	Chrome Plated Male Backplate	CBBPCPM
15mm	Cast Brass Dual Purpose Bracket Chrome Plated 1/4" BSP	CBDPBPCP015
22mm	Cast Brass Dual Purpose Bracket Chrome Plated 1/4" BSP	CBDPBPCP022
28mm	Cast Brass Dual Purpose Bracket Chrome Plated 1/4" BSP	CBDPBPCP028
15mm	Chrome Plate Hospital Bracket	CBHBPCP015
22mm	Chrome Plate Hospital Bracket	CBHBPCP022
28mm	Chrome Plate Hospital Bracket	CBHBPCP028
35mm	Chrome Plate Hospital Bracket	CBHBPCP035
42mm	Chrome Plate Hospital Bracket	CBHBPCP042
54mm	Chrome Plate Hospital Bracket	CBHBPCP054
15mm	Cast Brass S/B Clip Chrome Plated	CBSBPCP015
22mm	Cast Brass S/B Clip Chrome Plated	CBSBPCP022
28mm	Cast Brass S/B Clip Chrome Plated	CBSBPCP028
35mm	Cast Brass S/B Clip Chrome Plated	CBSBPCP035
42mm	Cast Brass S/B Clip Chrome Plated	CBSBPCP042
54mm	Cast Brass S/B Clip Chrome Plated	CBSBPCP054
15mm	Cast Brass S/S Ring Chrome Plated	CBSSPCP015
22mm	Cast Brass S/S Ring Chrome Plated	CBSSPCP022
28mm	Cast Brass S/S Ring Chrome Plated	CBSSPCP028
35mm	Cast Brass S/S Ring Chrome Plated	CBSSPCP035
42mm	Cast Brass S/S Ring Chrome Plated	CBSSPCP042
54mm	Cast Brass S/S Ring Chrome Plated	CBSSPCP054
15mm	Pressed Brass S/B Clip Chrome Plate	PBSBPCP015
22mm	Pressed Brass S/B Clip Chrome Plate	PBSBPCP022
28mm	Pressed Brass S/B Clip Chrome Plate	PBSBPCP028
35mm	Pressed Brass S/B Clip Chrome Plate	PBSBPCP035
42mm	Pressed Brass S/B Clip Chrome Plate	PBSBPCP042
54mm	Pressed Brass S/B Clip Chrome Plate	PBSBPCP054



Copper Saddle Clips

Size (mm)	Product	Product Code
15	Copper Saddle Clip	CSC015
22	Copper Saddle Clip	CSC022
28	Copper Saddle Clip	CSC028

PIPE SUPPORT

Wooden Blocks

Kiln-dried hard wooden blocks available in various thicknesses for steel and copper.

Thick Wooden Block and Clip (Steel)

Size & Thickness	Product Code
15nb x 15mm	WB015015
15nb x 20mm	WB015020
15nb x 25mm	WB015025
15nb x 30mm	WB015030
15nb x 40mm	WB015040
20nb x 15mm	WB020015
20nb x 20mm	WB020020
20nb x 25mm	WB020025
20nb x 30mm	WB020030
20nb x 40mm	WB020040
25nb x 15mm	WB025015
25nb x 20mm	WB025020
25nb x 25mm	WB025025
25nb x 30mm	WB025030
25nb x 40mm	WB025040
32nb x 15mm	WB032015
32nb x 20mm	WB032020
32nb x 25mm	WB032025
32nb x 30mm	WB032030
32nb x 40mm	WB032040
40nb x 15mm	WB040015
40nb x 20mm	WB040020
40nb x 25mm	WB040025
40nb x 30mm	WB040030
40nb x 40mm	WB040040
50nb x 15mm	WB050015
50nb x 20mm	WB050020
50nb x 25mm	WB050025
50nb x 30mm	WB050030
50nb x 40mm	WB050040
65nb x 15mm	WB065015
65nb x 20mm	WB065020
65nb x 25mm	WB065025
65nb x 30mm	WB065030
65nb x 40mm	WB065040
80nb x 15mm	WB080015
80nb x 20mm	WB080020
80nb x 25mm	WB080025
80nb x 30mm	WB080030
80nb x 40mm	WB080040
84nb x 50mm	WB084050
100nb x 15mm	WB100015
100nb x 20mm	WB100020
100nb x 25mm	WB100025
100nb x 30mm	WB100030
100nb x 40mm	WB100040
104nb x 50mm	WB104050
129nb x 50mm	WB129050
150nb x 25mm	WB150025
154nb x 50mm	WB154050
204nb x 50mm	WB204050

Thick Wooden Block and Clip (Copper)

Size & Thickness	Product Code
15Cu x 15mm	WB015C015
15Cu x 20mm	WB015C020
15Cu x 25mm	WB015C025
15Cu x 30mm	WB015C030
15Cu x 40mm	WB015C040
22Cu x 15mm	WB022015
22Cu x 20mm	WB022020
22Cu x 25mm	WB022025
22Cu x 30mm	WB022030
22Cu x 40mm	WB022040
28Cu x 15mm	WB028015
28Cu x 20mm	WB028020
28Cu x 25mm	WB028025
28Cu x 30mm	WB028030
28Cu x 40mm	WB028040
35Cu x 15mm	WB035015
35Cu x 20mm	WB035020
35Cu x 25mm	WB035025
35Cu x 30mm	WB035030
35Cu x 40mm	WB035040
42Cu x 20mm	WB042020
42Cu x 25mm	WB042025
42Cu x 30mm	WB042030
42Cu x 40mm	WB042040
54Cu x 15mm	WB054015
54Cu x 20mm	WB054020
54Cu x 25mm	WB054025
54Cu x 30mm	WB054030
54Cu x 40mm	WB054040
54Cu x 50mm	WB054050
67Cu x 15mm	WB067015
67Cu x 20mm	WB067020
67Cu x 25mm	WB067025
67Cu x 30mm	WB067030
67Cu x 40mm	WB067040
76Cu x 15mm	WB076015
76Cu x 20mm	WB076020
76Cu x 25mm	WB076025
76Cu x 30mm	WB076030
76Cu x 40mm	WB076040
108Cu x 15mm	WB108015
108Cu x 20mm	WB108020
108Cu x 25mm	WB108025
108Cu x 30mm	WB108030
108Cu x 40mm	WB108040



Manufactured from a closed cell rigid material, our phenolic blocks have a high-density foam appearance. They are bore coated and are CFC / HCFC free with a density of either 60, 80 or 120 kg/m³. Phenolic block pipe supports are used when thermal insulation of pipework and ducting is required. The primary function of the insulation is to isolate the pipework from the support bracket itself, to limit heat loss in the pipework system during thermal bridging.

Phenolic Blocks (Copper)

Size & Thickness	Product Code
15Cu x 15mm	PB015015
15Cu x 20mm	PB015020
15Cu x 25mm	PB015025
15Cu x 30mm	PB015030
15Cu x 40mm	PB015040
22Cu x 15mm	PB022015
22Cu x 20mm	PB022020
22Cu x 25mm	PB022025
22Cu x 30mm	PB022030
22Cu x 40mm	PB022040
28Cu x 15mm	PB028015
28Cu x 20mm	PB028020
28Cu x 25mm	PB028025
28Cu x 30mm	PB028030
28Cu x 40mm	PB028040
35Cu x 15mm	PB035015
35Cu x 20mm	PB035020
35Cu x 25mm	PB035025
35Cu x 30mm	PB035030
35Cu x 40mm	PB035040
42Cu x 15mm	PB042CU015
42Cu x 20mm	PB042CU020
42Cu x 25mm	PB042CU025
42Cu x 30mm	PB042CU030
42Cu x 40mm	PB042CU040
54Cu x 15mm	PB054015
54Cu x 20mm	PB054020
54Cu x 25mm	PB054025
54Cu x 30mm	PB054030
54Cu x 40mm	PB054040
67Cu x 15mm	PB067015
67Cu x 20mm	PB067020
67Cu x 25mm	PB067025
67Cu x 30mm	PB067030
67Cu x 40mm	PB067040
76Cu x 15mm	PB076CU015
76Cu x 20mm	PB076CU020
76Cu x 25mm	PB076CU025
76Cu x 30mm	PB076CU030
76Cu x 40mm	PB076CU040
108Cu x 15mm	PB108015
108Cu x 20mm	PB108020
108Cu x 25mm	PB108025
108Cu x 30mm	PB108030
108Cu x 40mm	PB108040

Phenolic Blocks (Steel)

Size & Thickness	Product Code
15nb x 15mm	PB021015
15nb x 20mm	PB021020
15nb x 25mm	PB021025
15nb x 30mm	PB021030
15nb x 40mm	PB021040
20nb x 15mm	PB027015
20nb x 20mm	PB027020
20nb x 25mm	PB027025
20nb x 30mm	PB027030
20nb x 40mm	PB027040
25nb x 15mm	PB034015
25nb x 20mm	PB034020
25nb x 25mm	PB034025
25nb x 30mm	PB034030
25nb x 40mm	PB034040
32nb x 15mm	PB042015
32nb x 20mm	PB042020
32nb x 25mm	PB042025
32nb x 30mm	PB042030
32nb x 40mm	PB042040
40nb x 15mm	PB048015
40nb x 20mm	PB048020
40nb x 25mm	PB048025
40nb x 30mm	PB048030
40nb x 40mm	PB048040
44nb x 40mm	PB044040
50nb x 15mm	PB060015
50nb x 20mm	PB060020
50nb x 25mm	PB060025
50nb x 30mm	PB060030
50nb x 40mm	PB060040
54nb x 50mm	PB054050
65nb x 15mm	PB076015
65nb x 20mm	PB076020
65nb x 25mm	PB076025
65nb x 30mm	PB076030
65nb x 40mm	PB076040
70nb x 50mm	PB070050
80nb x 15mm	PB089015
80nb x 20mm	PB089020
80nb x 25mm	PB089025
80nb x 30mm	PB089030
80nb x 40mm	PB089040
84nb x 50mm	PB084050
100nb x 15mm	PB114015

Phenolic Blocks (Steel)

Size & Thickness	Product Code
100nb x 20mm	PB114020
100nb x 25mm	PB114025
100nb x 30mm	PB114030
100nb x 40mm	PB114040
104nb x 50mm	PB104050
129nb x 50mm	PB129050
150nb x 25mm	PB150025
154nb x 50mm	PB154050
204nb x 50mm	PB204050
254nb x 50mm	PB254050



PIPE SUPPORT

Fixings & Ancillaries

CORE offers an extensive range of fixing and ancillary products that complement our range of pipe support brackets and clamps. The majority of products can be used throughout first fix installations as assembly components with our pipe clamps and brackets.

BZP Hex Head Setscrew 8.8

Size	Product Code
M8 x 25mm	M825
M10 x 20mm	M1020
M10 x 25mm	M1025
M10 x 30mm	M1030
M10 x 35mm	M1035
M10 x 40mm	M1040
M10 x 50mm	M1050
M12 x 40mm	M1240
M12 x 45mm	M1245
M16 x 35mm	M1635
M16 x 40mm	M1640
M16 x 45mm	M1645
M20 x 40mm	M2040
M20 x 45mm	M2045
M20 x 50mm	M2050
M20 x 55mm	M2055
M24 x 60mm	M2460

Pozi Countersunk Woodscrew

Size	Product Code
3/4" x 8	WS08020
1" x 8	WS08025
1.1/4" x 8	WS08032
1.1/2" x 8	WS08040
2" x 8	WS08050
2.1/2" x 8	WS08065
1" x 10	WS10025
1.1/4" x 10	WS10032
1.1/2" x 10	WS10040
2" x 10	WS10050
2.1/2" x 10	WS10065
3" x 10	WS10080
1.1/2" x 12	WS12040
2" x 12	WS12050
2.1/2" x 12	WS12065
3" x 12	WS12080
3" x 8	WS08080
4" x 10	WS10100
4" x 12	WS12100



BZP Hex Bolt Grade 8.8

Size	Product Code
M6 x 25mm	M625
M6 x 30mm	M630
M6 x 40mm	M640
M6 x 50mm	M650
M8 x 30mm	M830
M8 x 40mm	M840
M8 x 50mm	M850
M10 x 45mm	M1045
M10 x 60mm	M1060
M10 x 65mm	M1065
M10 x 70mm	M1070
M10 x 75mm	M1075
M12 x 25mm	M1225
M12 x 30mm	M1230
M12 x 35mm	M1235
M12 x 50mm	M1250
M12 x 55mm	M1255
M12 x 60mm	M1260
M12 x 65mm	M1265
M12 x 70mm	M1270
M12 x 75mm	M1275
M12 x 90mm	M1290
M16 x 25mm	M1625
M16 x 50mm	M1650
M16 x 55mm	M1655
M16 x 60mm	M1660
M16 x 65mm	M1665

BZP Hex Bolt Grade 8.8

Size	Product Code
M16 x 70mm	M1670
M16 x 75mm	M1675
M16 x 80mm	M1680
M16 x 90mm	M1690
M16 x 100mm	M16100
M16 x 110mm	M16110
M16 x 130mm	M16130
M16 x 150mm	M16150
M16 x 160mm	M16160
M16 x 200mm	M16200
M16 x 220mm	M16220
M20 x 60mm	M2060
M20 x 65mm	M2065
M20 x 70mm	M2070
M20 x 75mm	M2075
M20 x 80mm	M2080
M20 x 90mm	M2090
M24 x 50mm	M2450
M24 x 75mm	M2475
M24 x 80mm	M2480
M24 x 90mm	M2490
M24 x 100mm	M24100
M24 x 110mm	M24110
M24 x 120mm	M24120
M24 x 130mm	M24130
M24 x 150mm	M24150





BZP Hex Nut

Size	Product Code
M6	NM06
M8	NM08
M10	NM10
M12	NM12
M16	NM16
M20	NM20
M24	NM24

Hex Full Nut Stainless - Din934

Size	Product Code
M6	NM06SS
M8	NM08SS
M10	NM10SS
M12	NM12SS
M16	NM16SS
M20	NM20SS

BZP Penny Washer

Size	Product Code
M6 x 25mm	PW0625
M6 x 30mm	PW06
M8 x 25mm	PW08
M10 x 30mm	PW10
M12 x 30mm	PW12

P-Type Nyloc Nuts BZP - Din982

Size	Product Code
M8	NM08NL
M10	NM10NL
M12	NM12NL
M16	NM16NL
M20	NM20NL

Hex Galvanised Full Nut

Size	Product Code
M6	FLA70201
M8	FLA70202
M10	FLA70203
M12	FLA70204

BZP Spring Washer - Din7980

Size	Product Code
M8	SWM08
M10	SWM10
M12	SWM12
M16	SWM16
M20	SWM20
M24	SWM24

BZP Form A Washer - Din125A

Size	Product Code
M6	WM06
M8	WM08
M10	WM10
M12	WM12
M16	WM16
M20	WM20
M24	WM24

The most commonly used gaskets in piping systems are standard flange gaskets in rubber or fibre, or spiral wound. For particularly large pipes, gaskets can be manufactured in segments of rubber and joined together.

What Standards Cover Gaskets?

The most common standards are:

- BS10:2009: British Standard specification for flanges and bolting for pipes, valves and fittings.
- ANSI: the American National Standards Institute.
- ASA: the American Standards Association (now ANSI).
- ASME: the American Society of Mechanical Engineers. The ASME B16.47 Series A and B took over from MSS SP-44 (Series A) and API 605 (Series B)
- ISO: International Organisation for Standardisation.

British and European Standards

The current standard for use in the UK and Europe is BS EN 1514-1:1997. This standard took over from BS 4865-1:1989 for PN flanges. Other standards include:

- BS EN 1092-1: Concerning flanges for pipes. Establishes the requirements for steel flanges based on their nominal pressure (PN) and dimension (DN). Moreover, it defines the different kinds of flanges and their sealing surfaces, tolerances, threading and labelling.
- BS EN 12560-1:2001: Flanges and their joints. Gaskets for Class-designated flanges. Non-metallic flat gaskets with or without inserts.
- BS EN 12560-2:2013: Flanges and their joints. Dimensions of gaskets for Class-designated flanges. Spiral wound gaskets for use with steel flanges.
- BS EN 12560-3:2001: Flanges and their joints. Gaskets for Class-designated flanges. Non-metallic PTFE envelope gaskets.
- BS EN 14772:2005: Flanges and their joints. Quality assurance inspection and testing of gaskets in accordance with the series of standards EN 1514 and EN 12560.

Flange Packs



The CORE FLANGE-KIT contains all the components necessary for flange sealing. Each kit incorporates a WRAS Approved BS7531 Grade X Gasket and a full set of bolts, nuts and washers that are customised to suit the necessary flange rating.

PM-OR Spiral Wound



Spiral wound gaskets are manufactured by winding preformed metal strip and a soft filler material into a spiral seal with excellent mechanical resistance and recovery. They are available with or without retaining rings, and in a wide range of materials to ensure compatibility with the sealing media and operating conditions.

Flange Packs

Product Code	Description
COREFP6050	50nb PN6 CORE Flange Pack
COREFP6065	65nb PN6 CORE Flange Pack
COREFP6080	80nb PN6 CORE Flange Pack
COREFP6100	100nb PN6 CORE Flange Pack
COREFP6125	125nb PN6 CORE Flange Pack
COREFP6150	150nb PN6 CORE Flange Pack
COREFP6200	200nb PN6 CORE Flange Pack
COREFP16050	50nb PN16 CORE Flange Pack
COREFP16065	65nb PN16 CORE Flange Pack
COREFP16080	80nb PN16 CORE Flange Pack
COREFP16100	100nb PN16 CORE Flange Pack
COREFP16125	125nb PN16 CORE Flange Pack
COREFP16150	150nb PN16 CORE Flange Pack
COREFP16200	200nb PN16 CORE Flange Pack

PM-OR Spiral Wound

Product Code	Description
COREPMOR16015	15nb CORE PN10-40 PM-OR Spiral Wound Gasket
COREPMOR16020	20nb CORE PN10-40 PM-OR Spiral Wound Gasket
COREPMOR16025	25nb CORE PN10-40 PM-OR Spiral Wound Gasket
COREPMOR16032	32nb CORE PN10-40 PM-OR Spiral Wound Gasket
COREPMOR16040	40nb CORE PN10-40 PM-OR Spiral Wound Gasket
COREPMOR16050	50nb CORE PN10-40 PM-OR Spiral Wound Gasket
COREPMOR16065	65nb CORE PN10-40 PM-OR Spiral Wound Gasket
COREPMOR16080	80nb CORE PN10-40 PM-OR Spiral Wound Gasket
COREPMOR16100	100nb CORE PN10-16 PM-OR Spiral Wound Gasket
COREPMOR16125	125nb CORE PN10-16 PM-OR Spiral Wound Gasket
COREPMOR16150	150nb CORE PN10-16 PM-OR Spiral Wound Gasket
COREPMOR16200	200nb CORE PN10-16 PM-OR Spiral Wound Gasket
COREPMOR16250	250nb CORE PN16 PM-OR Spiral Wound Gasket
COREPMOR16300	300nb CORE PN16 PM-OR Spiral Wound Gasket

Full Face EPDM

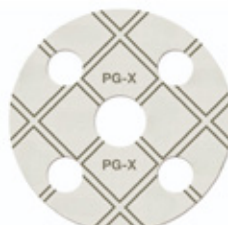


EPDM (WRAS) is a high quality elastomer with excellent physical properties that meets the requirements of BS 6920-1:2000 and BS EN 681-1 (cold potable water supply 23°C).

Full Face EPDM

Product Code	Description
RUB16FF015	15nb PN16 CORE Full Face EPDM Gasket
RUB16FF020	20nb PN16 CORE Full Face EPDM Gasket
RUB16FF025	25nb PN16 CORE Full Face EPDM Gasket
RUB16FF032	32nb PN16 CORE Full Face EPDM Gasket
RUB16FF040	40nb PN16 CORE Full Face EPDM Gasket
RUB16FF050	50nb PN16 CORE Full Face EPDM Gasket
RUB16FF065	65nb PN16 CORE Full Face EPDM Gasket
RUB16FF080	80nb PN16 CORE Full Face EPDM Gasket
RUB16FF100	100nb PN16 CORE Full Face EPDM Gasket
RUB16FF125	125nb PN16 CORE Full Face EPDM Gasket
RUB16FF150	150nb PN16 CORE Full Face EPDM Gasket
RUB16FF200	200nb PN16 CORE Full Face EPDM Gasket
RUB16FF250	250nb PN16 CORE Full Face EPDM Gasket
RUB16FF300	300nb PN16 CORE Full Face EPDM Gasket
RUB16FF350	350nb PN16 CORE Full Face EPDM Gasket
RUB16FF400	400nb PN16 CORE Full Face EPDM Gasket
RUB16FF500	500nb PN16 CORE Full Face EPDM Gasket

IBC BS7531 Grade X



PG-X is a high performance grade of compressed fibre sheet material based on aramid and inorganic fibres with a nitrile binding system.

IBC BS7531 Grade X

Product Code	Description
COREGX16015	15nb CORE PN10-40 IBC BS7531 Grade X Gasket 1.5mm
COREGX16020	20nb CORE PN10-40 IBC BS7531 Grade X Gasket 1.5mm
COREGX16025	25nb CORE PN10-40 IBC BS7531 Grade X Gasket 1.5mm
COREGX16032	32nb CORE PN10-40 IBC BS7531 Grade X Gasket 1.5mm
COREGX16040	40nb CORE PN10-40 IBC BS7531 Grade X Gasket 1.5mm
COREGX16050	50nb CORE PN10-40 IBC BS7531 Grade X Gasket 1.5mm
COREGX16065	65nb CORE PN10-40 IBC BS7531 Grade X Gasket 1.5mm
COREGX16080	80nb CORE PN10-40 IBC BS7531 Grade X Gasket 1.5mm
COREGX16100	100nb CORE PN10-16 IBC BS7531 Grade X Gasket 1.5mm
COREGX16125	125nb CORE PN10-16 IBC BS7531 Grade X Gasket 1.5mm
COREGX16150	150nb CORE PN10-16 IBC BS7531 Grade X Gasket 1.5mm
COREGX16200	200nb CORE PN10-16 IBC BS7531 Grade X Gasket 1.5mm
COREGX16250	250nb CORE PN16 IBC BS7531 Grade X Gasket 1.5mm
COREGX16300	300nb CORE PN16 IBC BS7531 Grade X Gasket 1.5mm

IBC EPDM



EPDM (WRAS) is a high quality elastomer with excellent physical properties that meets the requirements of BS 6920-1:2000 and BS EN 681-1 (cold potable water supply 23°C).

IBC EPDM

Product Code	Description
RUB16015	15nb PN16 CORE IBC EPDM Gasket WRAS
RUB16020	20nb PN16 CORE IBC EPDM Gasket WRAS
RUB16025	25nb PN16 CORE IBC EPDM Gasket WRAS
RUB16032	32nb PN16 CORE IBC EPDM Gasket WRAS
RUB16040	40nb PN16 CORE IBC EPDM Gasket WRAS
RUB16050	50nb PN16 CORE IBC EPDM Gasket WRAS
RUB16065	65nb PN16 CORE IBC EPDM Gasket WRAS
RUB16080	80nb PN16 CORE IBC EPDM Gasket WRAS
RUB16100	100nb PN16 CORE IBC EPDM Gasket WRAS
RUB16125	125nb PN16 CORE IBC EPDM Gasket WRAS
RUB16150	150nb PN16 CORE IBC EPDM Gasket WRAS
RUB16200	200nb PN16 CORE IBC EPDM Gasket WRAS
RUB16250	250nb PN16 CORE IBC EPDM Gasket WRAS
RUB16300	300nb PN16 CORE IBC EPDM Gasket WRAS

IBC PG-T



PG-T is a high quality graphite laminate material in which exfoliated graphite is mechanically bonded to a 316 stainless steel tanged insert.

IBC PG-T

Product Code	Description
COREPGT16015	15nb CORE PN10-40 IBC PG-T Gasket 1.5mm
COREPGT16020	20nb CORE PN10-40 IBC PG-T Gasket 1.5mm
COREPGT16025	25nb CORE PN10-40 IBC PG-T Gasket 1.5mm
COREPGT16032	32nb CORE PN10-40 IBC PG-T Gasket 1.5mm
COREPGT16040	40nb CORE PN10-40 IBC PG-T Gasket 1.5mm
COREPGT16050	50nb CORE PN10-40 IBC PG-T Gasket 1.5mm
COREPGT16065	65nb CORE PN10-40 IBC PG-T Gasket 1.5mm
COREPGT16080	80nb CORE PN10-40 IBC PG-T Gasket 1.5mm
COREPGT16100	100nb CORE PN10-16 IBC PG-T Gasket 1.5mm
COREPGT16125	125nb CORE PN10-16 IBC PG-T Gasket 1.5mm
COREPGT16150	150nb CORE PN10-16 IBC PG-T Gasket 1.5mm
COREPGT16200	200nb CORE PN10-16 IBC PG-T Gasket 1.5mm
COREPGT16250	250nb CORE PN16 IBC PG-T Gasket 1.5mm
COREPGT16300	300nb CORE PN16 IBC PG-T Gasket 1.5mm

PIPE SUPPORT

Gaskets & Product Selector

IBC Non Asbestos



The gaskets are resistant to oils, cooling, and brake fluids for water and steam piping systems. Due to its material content, the gasket is highly flexible and adapts perfectly to irregularities in the flanges used with it.

PSM Graphite IBC



Graphite gaskets are versatile and able to be used in a wide range of industries, including the chemical, petrochemical, and manufacturing sectors.

IBC Non Asbestos

Product Code	Description
NAG6015	15nb PN6 CORE IBC Non Asbestos Gasket
NAG6020	20nb PN6 CORE IBC Non Asbestos Gasket
NAG6025	25nb PN6 CORE IBC Non Asbestos Gasket
NAG6032	32nb PN6 CORE IBC Non Asbestos Gasket
NAG6040	40nb PN6 CORE IBC Non Asbestos Gasket
NAG6050	50nb PN6 CORE IBC Non Asbestos Gasket
NAG6065	65nb PN6 CORE IBC Non Asbestos Gasket
NAG6080	80nb PN6 CORE IBC Non Asbestos Gasket
NAG6100	100nb PN6 CORE IBC Non Asbestos Gasket
NAG6125	125nb PN6 CORE IBC Non Asbestos Gasket
NAG6150	150nb PN6 CORE IBC Non Asbestos Gasket
NAG6200	200nb PN6 CORE IBC Non Asbestos Gasket
NAG6250	250nb PN6 CORE IBC Non Asbestos Gasket
NAG6300	300nb PN6 CORE IBC Non Asbestos Gasket
NAG16015	15nb PN16 CORE IBC Non Asbestos Gasket
NAG16020	20nb PN16 CORE IBC Non Asbestos Gasket
NAG16025	25nb PN16 CORE IBC Non Asbestos Gasket
NAG16032	32nb PN16 CORE IBC Non Asbestos Gasket
NAG16040	40nb PN16 CORE IBC Non Asbestos Gasket
NAG16050	50nb PN16 CORE IBC Non Asbestos Gasket
NAG16065	65nb PN16 CORE IBC Non Asbestos Gasket
NAG16080	80nb PN16 CORE IBC Non Asbestos Gasket
NAG16100	100nb PN16 CORE IBC Non Asbestos Gasket
NAG16125	125nb PN16 CORE IBC Non Asbestos Gasket
NAG16150	150nb PN16 CORE IBC Non Asbestos Gasket
NAG16200	200nb PN16 CORE IBC Non Asbestos Gasket
NAG16250	250nb PN16 CORE IBC Non Asbestos Gasket
NAG16300	300nb PN16 CORE IBC Non Asbestos Gasket
NAG16350	350nb PN16 CORE IBC Non Asbestos Gasket
NAG16400	400nb PN16 CORE IBC Non Asbestos Gasket
NAG16450	450nb PN16 CORE IBC Non Asbestos Gasket
NAG16500	500nb PN16 CORE IBC Non Asbestos Gasket

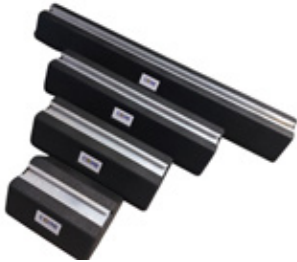
PSM Graphite IBC

Product Code	Description
PSM16015	15nb PSM CORE Graphite IBC Gasket PN16
PSM16020	20nb PSM CORE Graphite IBC Gasket PN16
PSM16025	25nb PSM CORE Graphite IBC Gasket PN16
PSM16032	32nb PSM CORE Graphite IBC Gasket PN16
PSM16040	40nb PSM CORE Graphite IBC Gasket PN16
PSM16050	50nb PSM CORE Graphite IBC Gasket PN16
PSM16065	65nb PSM CORE Graphite IBC Gasket PN16
PSM16080	80nb PSM CORE Graphite IBC Gasket PN16
PSM16100	100nb PSM CORE Graphite IBC Gasket PN16
PSM16125	125nb PSM CORE Graphite IBC Gasket PN16
PSM16150	150nb PSM CORE Graphite IBC Gasket PN16
PSM16200	200nb PSM CORE Graphite IBC Gasket PN16
PSM16250	250nb PSM CORE Graphite IBC Gasket PN16
PSM16300	300nb PSM CORE Graphite IBC Gasket PN16
PSM16350	350nb PSM CORE Graphite IBC Gasket PN16
PSM16400	400nb PSM CORE Graphite IBC Gasket PN16
PSM16450	450nb PSM CORE Graphite IBC Gasket PN16
PSM16500	500nb PSM CORE Graphite IBC Gasket PN16
PSM16550	550nb PSM CORE Graphite IBC Gasket PN16
PSM16600	600nb PSM CORE Graphite IBC Gasket PN16

	EPDM (WRAS)	PG-X	PG-T	SPITAL WOUND
Potable Water	✓	✓		
Steam			✓	✓
Gas		✓	✓	✓
PN16 & CLASS 150		✓	✓	✓
PN40 & CLASS 300		✓	✓	✓
>PN40 & CLASS 300				✓
Plastic Flanges	✓			

Rubber Feet

A practical and versatile support solution to support cable management, ducting and pipework installations. All feet have a 41mm x 21mm bonded channel, which is recessed into the top face. The range is made from recycled SBR rubber and reduces vibration and noise absorption with different load capacities depending on foot size.



Rubber Foot (with strut)

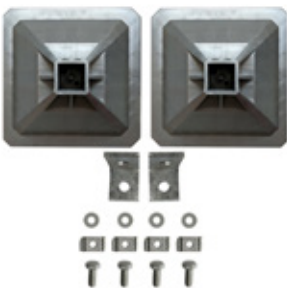
Product Code	Description	Working Temp Range	Max Load (per foot)
SFFX250	CORE FX 250mm Rubber Foot With Strut	-40°C to 80°C	160kg
SFFX400	CORE FX 400mm Rubber Foot With Strut	-40°C to 80°C	240kg
SFFX600	CORE FX 600mm Rubber Foot With Strut	-40°C to 80°C	450kg
SFFX1000	CORE FX 1000mm Rubber Foot With Strut	-40°C to 80°C	645kg

H Frame Kits

The H frame kit is a quick and easy solution for cable management, ducting and pipework installations. The kit is supplied in a box complete with two feet and one fixing kit.

Specification

- High-Density Polyethylene (HDPE)
- Closed cell polyethylene anti-vibration pads pre-attached to feet
- 10 year warranty
- Available in 305mm (350kg load) & 500mm (500kg load)



H-Frame Kit (strut not included)

Product Code	Description	Max Load
SFHKF305	CORE 305mm H-Frame Kit (Strut Not Included)	350kg
SFHKF500	CORE 500mm H-Frame Kit (Strut Not Included)	500kg

CONTROLS

A range of controls are available to help monitor the performance of the system, for both commercial and industrial applications. The portfolio of product within this section is scheduled to expand; for the latest range information visit our website.

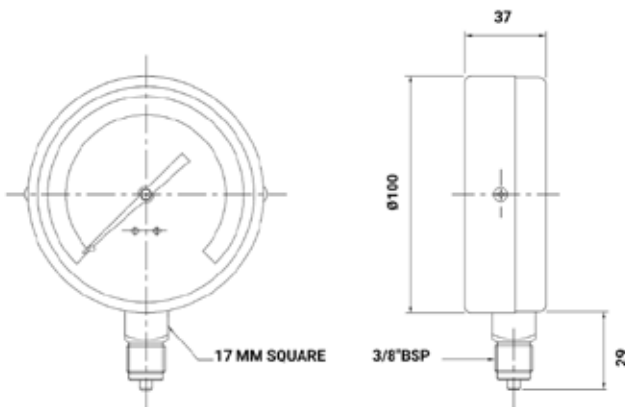


CONTROLS

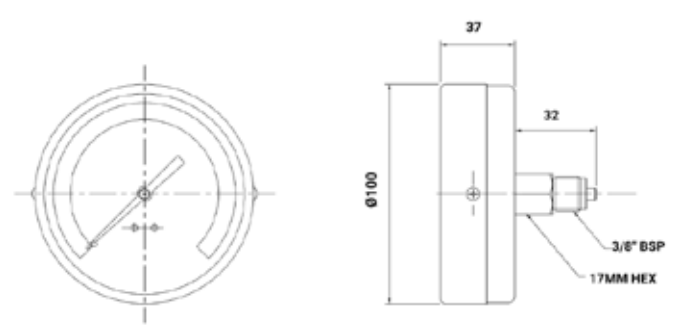
Pressure Gauges

CORE offers a range of bottom and back entry pressure gauges which are pre-set with 4, 7, 11 and 16 bar options. Items can be specially ordered should calibration and test certificates be required. All have 3/8" inch BSP male connection and are tested to EN 837-1 standard with a stainless steel bezel.

Bottom Entry Diagram



Back Entry Diagram



Pressure Gauges

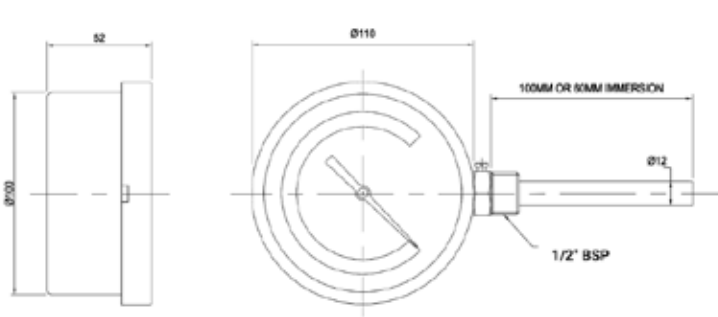
Product Code	Description	Entry
BC04	100mm Dial 3/8" BSP CORE Bottom Entry Blk&St/St Pressure Gauge 0-4 Bar	Bottom
BC07	100mm Dial 3/8" BSP CORE Bottom Entry Blk&St/St Pressure Gauge 0-7 Bar	Bottom
BC11	100mm Dial 3/8" BSP CORE Bottom Entry Blk&St/St Pressure Gauge 0-11 Bar	Bottom
BC16	100mm Dial 3/8" BSP CORE Bottom Entry Blk&St/St Pressure Gauge 0-16 Bar	Bottom
BC07CAL	100mm Dial 3/8" BSP CORE Bottom Entry Blk&St/St Pressure Gauge 0-7 Bar c/w Cal Cert	Bottom
BC11CAL	100mm Dial 3/8" BSP CORE Bottom Entry Blk&St/St Pressure Gauge 0-11 Bar c/w Cal Cert	Bottom
BC07BACK	100mm Dial 3/8" BSP CORE Back Entry Blk&St/St Pressure Gauge 0-7 Bar	Back
BC11BACK	100mm Dial 3/8" BSP CORE Back Entry Blk&St/St Pressure Gauge 0-11 Bar	Back
BC16CALBK	100mm Dial 3/8" BSP CORE Back Entry Blk&St/St Pressure Gauge 0-16 Bar c/w Cal Cert	Back

CONTROLS

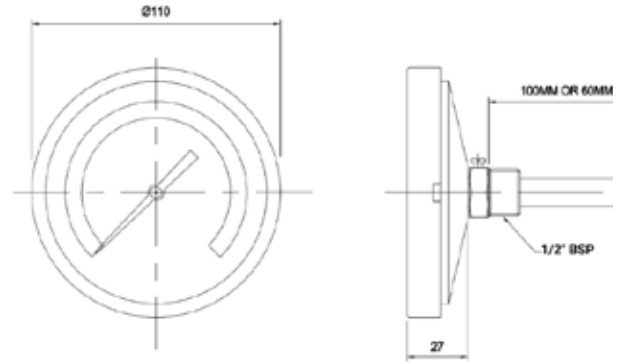
Thermometers

CORE offers a range of bottom and back entry thermometers which all have 100mm immersion depth with 1/2" BSP male connection. All have polished stainless steel bezel and are tested to EN 13190 standards able to operate up to 120°C.

Bottom Entry Diagram



Back Entry Diagram



Pressure Gauges

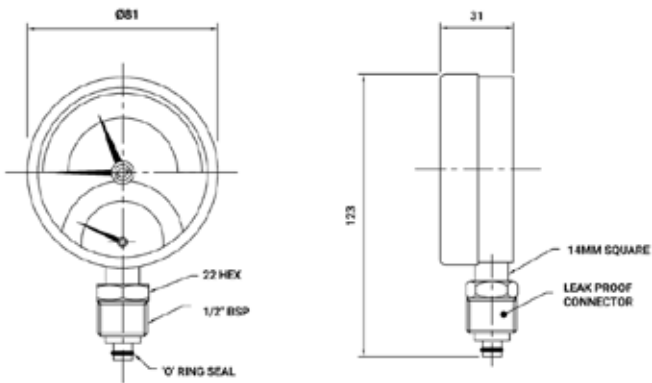
Product Code	Description	Entry
63120V	100mm Dial 0-120C CORE Bi-Metal 60mm Pocket Thermometer	Bottom
100120V	100mm Dial 0-120C CORE Bi-Metal 100mm Pocket Thermometer	Bottom
63120H	100mm Dial 0-120C CORE Bi-Metal 60mm Pocket Thermometer	Back
100120H	100mm Dial 0-120C CORE Bi-Metal 100mm Pocket Thermometer	Back

CONTROLS

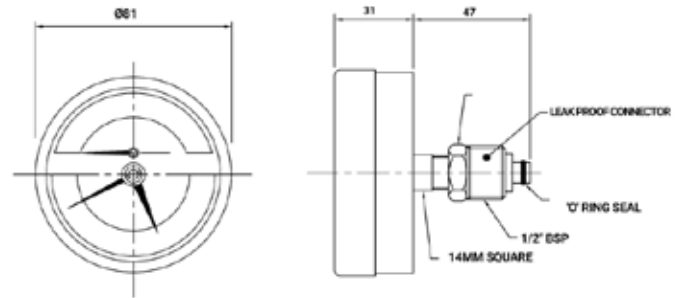
Combined Gauges

CORE offers both a back and bottom entry combined pressure and temperature gauge with a 1/2" male connection suitable up to 6 bar and 120°C with a mild steel black powder coated case.

Bottom Entry Diagram



Back Entry Diagram



Combined Gauges

Product Code	Description	Entry
BC06120	80mm Dial 0-6 Bar & 120C CORE Combined Pressure & Temp Gauge	Bottom
BC06120BACK	80mm Dial 0-6 Bar & 120C CORE Combined Pressure & Temp Gauge	Back



CONTROLS

Accessories & Product Selector

Accessories

A range of supporting accessories such as syphons and gauges are available, all stocked nationwide at Smith Brothers.



Accessories

Product Code	Description
SUS010	10nb Mild Steel U Syphon
SUS015	15nb Mild Steel U Syphon
BUS010	10nb Brass U Syphon
SRS010	10nb Mild Steel Ring Syphon
SRS015	15nb Mild Steel Ring Syphon
BRS010	10nb Brass Ring Syphon
GC008	8nb Brass Gauge Cock
GC010	10nb Brass Gauge Cock
GC015	15nb Brass Gauge Cock
63POC	50mm x 1/2" Brass Thermometer Pocket c/w Grubscrew
100POC	100mm x 1/2" Brass Thermometer Pocket c/w Grubscrew

<p>100mm PRESSURE GAUGES</p> <ul style="list-style-type: none"> 4-16 bar options available 3/8" BSP male connection Tested to EN 837-1 standards Stainless steel bezel Blow out disk Brass/bronze wetted materials Bourdon tube <div style="display: flex; justify-content: space-around;"> <div style="text-align: center;"> <p>BOTTOM ENTRY</p> <ul style="list-style-type: none"> BC04 BC07 BC07CAL BC11 BC11CAL BC16 </div> <div style="text-align: center;"> <p>BACK ENTRY</p> <ul style="list-style-type: none"> BC07BACK BC11BACK BC16CALBK </div> </div>	<p>100mm BI-METAL THERMOMETERS</p> <ul style="list-style-type: none"> 0-120°C & 0-240°F 1/2" BSP male connection Tested to EN 13190 standards Polished stainless steel bezel Solid drilled brass pocket (stainless steel available on request) <div style="display: flex; justify-content: space-around;"> <div style="text-align: center;"> <p>BOTTOM ENTRY</p> <ul style="list-style-type: none"> 63120H 100120H </div> <div style="text-align: center;"> <p>BACK ENTRY</p> <ul style="list-style-type: none"> 63120V 100120V </div> </div>
<p>80mm COMBINED PRESSURE AND TEMPERATURE GAUGES</p> <ul style="list-style-type: none"> 0-6 bar pressure range 0-120°C temperature range 1/2" male BSP connection Bright bezel Mild steel, black powder coated case <div style="display: flex; justify-content: space-around;"> <div style="text-align: center;"> <p>BOTTOM ENTRY</p> <ul style="list-style-type: none"> BC06120 </div> <div style="text-align: center;"> <p>BACK ENTRY</p> <ul style="list-style-type: none"> BC06120BACK </div> </div>	<p>ACCESSORIES</p> <div style="display: flex; justify-content: space-between;"> <div style="width: 45%;"> <p>U SYPHON</p> <ul style="list-style-type: none"> 10nb - SUS010 10nb - BUS010 (Brass) 15nb - SUS015 </div> <div style="width: 45%;"> <p>GAUGE COCKS</p> <ul style="list-style-type: none"> 8nb - GC008 10nb - GC010 15nb - GC015 </div> </div> <div style="display: flex; justify-content: space-between; margin-top: 10px;"> <div style="width: 45%;"> <p>RING SYPHON</p> <ul style="list-style-type: none"> 10nb - SRS010 10nb - BRS010 (Brass) 15nb - SRS015 </div> <div style="width: 45%;"> <p>THERMOMETER POCKET</p> <ul style="list-style-type: none"> 50mm - 63POC 100mm - 100POC </div> </div>

CORE[®]

Core values, quality products

Coming Soon...

**Plant Room
Safety**



Meters



CONSUMABLES

A comprehensive and wide product range covering the essential plumbing and heating consumables, including the installer favourite CORE pipe sealing cord. Whether it be commercial, industrial or domestic applications, CORE has a suitable range of consumable products to support every project requirement.



Saw Blades

Used for cutting various pipe profiles and comes in packs of 5.

Blade Profile

- Blade Material: BIM D6A M42
- Blade Thickness: 0.9mm
- Max Cutting Thickness: 4mm
- Suitable Application: Thin Sheet Metal, Non-Ferrous Metals, Solid Pipes/Profiles
- Teeth per Inch (TPI): 18



Saw Blades

Product Code	Description
CORERB150018	150mm x 18 x 5 CORE Reciprocating Saw Blades (Pack Of 5)
CORERB230018	230mm x 18 x 5 CORE Reciprocating Saw Blades (Pack Of 5)

DRILL BITS

CORE SDS Drill Bits feature carbide cutting edges for sharp and accurate cutting into masonry, concrete and natural stone. Spiralling flutes enable smooth and efficient drilling, with a centre tip to allow a precise drilling start and can be used for good guidance while drilling.

A range of flat wood drill bits are also available, 152mm in length in sizes from 10 to 25mm.



Drill Bits (SDS)

Product Code	Description
CORESDDS05110	5 x 110mm CORE SDS Drill Bit
CORESDDS055110	5.5 x 110mm CORE SDS Drill Bit
CORESDDS06110	6 x 110mm CORE SDS Drill Bit
CORESDDS07160	7 x 160mm CORE SDS Drill Bit
CORESDDS08160	8 x 160mm CORE SDS Drill Bit
CORESDDS10160	10 x 160mm CORE SDS Drill Bit
CORESDDS12160	12 x 160mm CORE SDS Drill Bit
CORESDDS16260	16 x 260mm CORE SDS Drill Bit
CORESDDS18260	18 x 260mm CORE SDS Drill Bit
CORESDDS25260	25 x 260mm CORE SDS Drill Bit



Drill Bits (Flat Wood)

Product Code	Description
COREWDB10	10 x 152mm CORE Flat Wood Drill Bit
COREWDB12	12 x 152mm CORE Flat Wood Drill Bit
COREWDB16	16 x 152mm CORE Flat Wood Drill Bit
COREWDB18	18 x 152mm CORE Flat Wood Drill Bit
COREWDB20	20 x 152mm CORE Flat Wood Drill Bit
COREWDB25	25 x 152mm CORE Flat Wood Drill Bit

A range of essential hand tools are available from CORE to support installers on a daily basis.

Automatic Tube Cutter

Cuts copper, brass, aluminium, thin-walled steel, and sound-insulated pipes or tubes. An integrated ratchet telescopic guide enables quick adjustment with automatic retraction whilst the monoblock construction ensures it is sturdy and stable with an integrated deburrer.



Automatic Tube Cutter

Product Code	Description
COREAUTOTUBE	Core Automatic Tube Cutter (6-67mm)

Heavy Duty Wrench

High strength one piece construction, with large capacity jaws and induction hardened teeth.



Heavy Duty Wrench

Product Code	Description
COREHDWRENCH14	14" CORE Heavy Duty Wrench
COREHDWRENCH18	18" CORE Heavy Duty Wrench
COREHDWRENCH24	24" CORE Heavy Duty Wrench
COREHDWRENCH36	36" CORE Heavy Duty Wrench

Steel Pipe Cutter

It features a high alloy steel tempered cutting wheel, ensuring longevity, as well as wide guide rollers that safely guide the cutting wheel during use, cutting steel pipe.



Steel Pipe Cutter

Product Code	Description
CORESTPIPECUTTER032	1.1/4" CORE Steel Pipe Cutter
CORESTPIPECUTTER050	2" CORE Steel Pipe Cutter

Stillson Wrench

Classic stillson design in forged and tempered steel. Unbreakable housing and shaft with induction hardened teeth.



Stillson Wrench

Product Code	Description
CORESTILLSONWRENCH14	14" CORE Stillson Wrench
CORESTILLSONWRENCH18	18" CORE Stillson Wrench
CORESTILLSONWRENCH24	24" CORE Stillson Wrench

Water Pump Pliers

Suitable for use in hard-to-reach areas, the pliers are long and slim with self-clamping jaws that provide a non-slip grip even on smooth pipes. Additionally, anti-slip plastic handles provide high grip safety when working with water and oil.



Water Pump Pliers

Product Code	Description
COREWATERPLIER10	10" CORE Water Pump Plier
COREWATERPLIER12	12" CORE Water Pump Plier

Wide Jaw Adjustable Wrench

Hot forged from chrome vanadium steel to industrial standard specifications. This wrench has a smooth, accurate size adjustment. Non-slip ergonomic soft grip handles deliver a positive grip during use. They are supplied with removable soft-grip jaw protectors which prevent damaging chrome or polished surfaces.



Wide Jaw Adjustable Wrench

Product Code	Description
COREWIDEJAWWRENCH6	6" CORE Wide Jaw Adj. Wrench
COREWIDEJAWWRENCH8	8" CORE Wide Jaw Adj. Wrench
COREWIDEJAWWRENCH10	10" CORE Wide Jaw Adj. Wrench

Offset Aluminium Wrench

A 90° self-clamping, one-handed corner pipe wrench with replaceable jaws.



Offset Aluminium Wrench

Product Code	Description
COREOFFSETALUWRENCH14	14" CORE Offset Aluminium Wrench

Aluminium Wrench

Features similar to Heavy Duty Pipe Wrenches but 40% lighter due to aluminium alloy handle construction.



Aluminium Wrench

Product Code	Description
COREALUWRENCH14	14" CORE Aluminium Wrench
COREALUWRENCH18	18" CORE Aluminium Wrench
COREALUWRENCH24	24" CORE Aluminium Wrench
COREALUWRENCH36	36" CORE Aluminium Wrench



Abrasive Pads

Textured non splintering abrasive mini pads general grade. This waterproof, washable, metal-free long-lasting product is an alternative to traditional steel wool. Versatile for various surface treatment, cleaning and polishing applications.

Abrasive Strips

Silicone abrasive cleaning strips are tough, waterproof & long lasting. A high-performance alternative to steel wool, emery and sandpaper. A waterproof, washable, non-clogging, open mesh abrasive that can be used on both sides, in both wet and dry conditions.

Pads & Strips

Product Code	Description
CTMP	CORE CleanTex Abrasive Mini Pads (Green) Pack Of 5
CFMS	CORE Cleanfit Abrasive Mini Strips (Pack Of 10)
CFROLL5M	CORE Cleanfit 5M Abrasive Strip

Foil Tape

Self-adhesive aluminium foil tape in 50mm or 100mm width options. Suitable for pipe lagging, duct sealing, heating and ventilation.



Foil Tape

Product Code	Description
COREALUTAPE050	50mm x 45m x 0.04 CORE Aluminium Foil Tape
COREALUTAPE100	100mm x 45m x 0.04 CORE Aluminium Foil Tape

Rags

Bag of heavy duty general-purpose industrial rags, mix of colours. Suitable for a wide range of applications, these cotton rags offer excellent absorbency and provide durable long lasting use.



Rags

Product Code	Description
BOR	CORE Bag Of Light Coloured Rags 10kg

Gas

Map gas refill bottle suitable for most soft soldering applications. Industrial-grade gas, which fits most common plumbing torches and conforms to European Standard EN12205.



MAP Gas

Product Code	Description
MGR	453g Map Gas Refill Bottle (Yellow Cylinder)



PTFE

WRAS approved PTFE tape available in white conforming to BS7786-1995 and yellow high density tape for gas conforming to EN 751-3 BS6920.

PTFE

Product Code	Description
PTFE	CORE PTFE Tape
PTFEG	CORE PTFE Tape For Gas

Hemp

Hemp is made from high-quality hemp fibres, specifically designed for sealing pipe threads. Used as a filler in conjunction with a thread paste to produce a tight seal and provide an effective barrier against leaks ensuring optimal sealing performance for leak-free connections.



Hemp

Product Code	Description
HEMPDIS	CORE Hemp Dispenser (80g)
HEMPREF	CORE Hemp Dispenser Refill (80g)



Solder Wire

Coil reel of lead-free solder wire, suitable for most plumbing applications requiring perfect joints, quickly and cleanly.

Solder Wire

Product Code	Description
LFS500	500g Coil CORE Lead Free Solder Wire



Weld Electrodes

Mild steel welding electrodes in 5kg boxes which have a rutile potassium based flux coating, conforming to E6013 specification.

Weld Electrodes

Product Code	Description
COREWE25350	2.5mm x 350mm CORE Weld Electrode 5kg
COREWE32350	3.2mm x 350mm CORE Weld Electrode 5kg
COREWE40400	4.0mm x 400mm CORE Weld Electrode 5kg



Sealing Cord

Pipe sealing cord 160m in length suitable for sealing metal and plastic threaded pipe and fittings for applications up to 149°C. Instantly seals requiring no cure time resulting in an immediate, full pressure seal, making it an ideal choice for a quick, easy and reliable seal.

Sealing Cord

Product Code	Description
COREPIPESEAL	CORE Pipe Sealing Cord (160m)

CONSUMABLES

Joining Guide



PRODUCT	KEY INFORMATION	POTABLE WATER	NON-POTABLE WATER	COMPRESSED AIR	NATURAL & TOWN GAS	LPG (GAS)	OIL & PETROL	STEAM
CORE Pipe Sealing Cord	Up to 149°C 1000 Bar max pressure	✓	✓		✓	✓		✓
CORE PTFE (Water)	-200°C to 260°C 30 Bar max pressure	✓	✓					
CORE PTFE (Gas)	-200°C to 260°C 100 Bar max pressure		✓		✓	✓	✓	
CORE Lead Free Solder Wire	Melting temp 227°C Pressure subject to joining method	✓	✓		✓	✓		
CORE HEMP	Up to 135°C 200 Bar max pressure	✓	✓					

Disclaimer

The information is believed to be correct at the time of publication; however, the document is for guideline use only. For complete accuracy, always check the product with a CORE representative. Missing information was either not available or disclosed. It is your responsibility that any product meets the necessary requirements. Any reliance placed upon this information will be totally at the user's risk.

CORE[®]

Core values, quality products

Coming Soon...

Aerosols

Lubricants

Paint

Brushes

**Plus more cleaning,
jointing and sealant
products!**

GENERAL INFORMATION

T&C's of Sale (SBS)

Smith Brothers Stores Limited (we, us, or SBS) is registered in England and Wales as company number 962846.

Our registered office is at Unit V2 Blaby Industrial Park, Winchester Avenue, Blaby, Leicester, LE8 4GZ.

We do not sell to consumers. Our products are available for purchase by other businesses only.

AGREED TERMS

1. DEFINITIONS

The following definitions apply in this agreement:

Business Day any day other than a Saturday, a Sunday, or a bank holiday in England and Wales.

Contract defined in clause 2.3.

Terms of Sale this document.

2. OUR CONTRACT WITH YOU

2.1 When you place an order with us, you offer to buy the products in your order for the prices we quote to you when you place the order. Each offer is subject to and incorporates these Terms of Sale.

2.2 You warrant to us that you are placing each order on behalf of a business and not as a consumer.

2.3 Your order, read together with these Terms of Sale, becomes a legally binding Contract only if we accept the order by:

- (a) delivering to you at least one of the products in your order; or
- (b) confirming in writing our acceptance of your order.

2.4 We do our best to make sure the prices we quote to you are correct. However, mistakes happen. If you place an order for a product that we have mispriced, the pricing error is obvious, and you should reasonably have recognised the price as mistaken, then we may cancel your order and refund you in full.

3. OUR PRODUCTS

3.1 Any product images in our print and online catalogues are for illustrative purposes only. The packaging and colour of the products you receive could differ from those images.

3.2 We may change the specification of any products you order if required by any applicable statutory or regulatory requirement.

4. PRICING AND PAYMENT

4.1 All prices exclude VAT. Unless stated otherwise in the product description or on the order form, prices also exclude delivery.

4.2 If we quote you a price in orally or in writing, the quote is valid for 30 days only.

4.3 We require payment in full when you place an order, subject to clause 4.4.

4.4 In our discretion, we may accept your order on credit and issue an invoice to you instead of requiring immediate payment. Payment of each such invoice is due at the end of the month following the date of the invoice.

5. DELIVERY, RISK, AND TITLE

5.1 We cannot guarantee delivery dates. If we provide a delivery date, it is an estimate only. We are not liable to you for any losses due to late delivery of products in an order, and the time of delivery is not of the essence in any Contract.

5.2 Risk in all products transfers from us to you upon delivery. A product is deemed to be delivered by us to you once either:

- (a) we (or a carrier contracted by us) delivers it to you at the delivery address agreed in the Contract; or
- (b) you (or a carrier contracted by you) collect it from us.

5.3 Notwithstanding delivery and the passing of risk, property in and title to the goods remains with us until we receive payment of the full price of:

- (a) all Goods and Services in the Contract and
- (b) all other goods and services supplied by us to you under any contract whatsoever. Payment of the full price includes, without limitation, the amount of any interest or other sum payable under the terms of this and all other contracts between us and you.

5.4 Until title to goods in a Contract passes from us to you under clause 5.2, you must:

- (a) store the goods so that it's obvious they belong to us;
- (b) not remove, deface, or obscure any labels or identifying marks on the goods;
- (c) keep the goods in good and substantial repair, and keep them insured against all risks on our behalf for the full value of those goods using an insurer that is reasonably acceptable to us; and
- (d) inform us, upon reasonable request, about the condition of the Equipment and any risk that your business may become insolvent.

6. WARRANTIES

6.1 As a buyer working in a skilled trade, you are solely responsible for making sure the goods you order from us are suitable for your purposes. We will not advise you on the correct use of the goods, and we do not warrant that the goods you buy from us are fit for your purposes.

6.2 We promise that upon delivery all goods we sell you will:

- (a) conform with their description, subject to clause 3; and
- (b) be free from material defects in design, material, and workmanship.

6.3 You must inspect the goods promptly after delivery. If we deliver defective goods to you, then you must:

- (a) notify us in writing within three Business Days after delivery;
- (b) give us a reasonable opportunity to examine the defective goods; and
- (c) return the goods to us at your cost if we ask you to.

6.4 If you comply with clause 6.3, then at our option we must either:

- (a) repair or replace the defective goods; or
- (b) fully refund the price (plus VAT) you paid us for the defective goods.

6.5 To the fullest extent permitted by law, each Contract excludes all conditions or warranties that would otherwise be implied by law.

6.6 These Terms of Sale also apply to any repaired or replacement goods we supply to you.

7. RETURNS

- 7.1 All sales are final, subject to clause 7.2.
- 7.2 You may request to return non-defective goods to us in a resalable condition in exchange for a credit on your account. We may accept or refuse the return of goods in our sole discretion. All returns are subject to a restocking charge of at least 25% (we will quote the restocking charge on an item-by-item basis before accepting any return). Title in any returned goods passes from you to us once we credit your account with the purchase price less the restocking charge.

8. LIMITS OF LIABILITY

- 8.1 The restrictions on liability in this clause 8 apply to every liability arising under or in connection with a Contract, including liability in contract, negligence, tort, or delict.
- 8.2 Our total liability to you under each Contract cannot exceed the larger of either £100,000 or the total value of the goods purchased under that Contract, plus reasonable legal costs.
- 8.3 We are not liable to you for:
- (a) indirect or consequential losses;
 - (b) special damages; or
 - (c) damages for loss of contracts or lost profits.
- 8.4 Nothing in these Terms of Sale limits any party's liability for death, personal injury, fraud, or fraudulent misrepresentation.

9. GENERAL

- 9.1 Entire agreement. Each Contract contains the entire agreement between you and us about the sale and purchase of the items listed in the corresponding order. A Contract can only be amended by a further written agreement between you and us that contains an express term stating an intention to amend that Contract.
- 9.2 Third party rights. Nothing in a Contract is enforceable by anyone except you and us.
- 9.3 Assignment. We may assign any of our rights under a Contract to a third party. You may not assign any of your rights under
- (a) Contract to a third party without our consent.

10. GOVERNING LAW AND JURISDICTION

- 10.1 If delivery of the goods occurs in Scotland, the Contract is governed by Scots law, and the parties must submit to the exclusive jurisdiction of the Scottish Courts to resolve any disputes arising under or in connection with the Contract.
- 10.2 If delivery of the goods occurs in Northern Ireland, the Contract is governed by Northern Irish law, and the parties must submit to the exclusive jurisdiction of the Courts of Northern Ireland to resolve any disputes arising under or in connection with the Contract.
- 10.3 If delivery of the goods occurs anywhere other than Scotland or Northern Ireland, the Contract is governed by English law, and the parties must submit to the exclusive jurisdiction of the Courts of England & Wales to resolve any disputes arising under or in connection with the Contract.

[View T&C's & all our Distribution Partners Policies online](#)



GENERAL INFORMATION

Distribution Partner Approvals

Our distribution partner SBS are constantly looking for ways to improve their operation. One way they do this is by teaming up with reputable industry accreditation organisations to ensure the business promotes the best industry practice.

Accreditations are often from external organisations that set standards for a business to adhere to, whether this be an activity or to hold and retain a certain status.



Smith Brothers are ISO 9001 certified. ISO 9001 is the world's most recognised quality management system standard, established by the International Organisation for Standardization (ISO). ISO 9001 helps organisations implement clear, repeatable processes to maintain a quality service for their customers every time.

SBS have an internal taskforce dedicated to maintaining this key accreditation as we continue down the path of self improvement.



SBS are a BESA affiliate member. As a trade body and membership organisation, BESA helps members and their customers specify and deliver better building engineering services within a better-built environment. BESA also provides a wide range of support services, from training courses and advice to sharing best practices and opportunities to network and secure new business. Their wider group also provide essential business services to help companies operate smoothly.



The BMTFA (British Metals Tubes and Fittings Association) is a Trade Association proud to represent the interests of its members involved in manufacturing and distributing metal tubes and fittings in the UK. They aim to provide a dedicated, representative voice for the metal tubes and fittings industry. By engaging with partners and stakeholders on behalf of their members, they aim to ensure that the industry works as effectively as possible in the interests of our members and their customers. SBS Managing Director Steve Smith is a volunteer BMTFA panellist, offering his knowledge and expertise to support the wider industry.



Gold FORS accreditation is awarded to operators who maintain their Silver & Bronze accreditation and are able to demonstrate that all driver licence and endorsements are verified through a service that directly accesses the DVLA data. All vehicles over 3.5 tonnes must be equipped with a left turn audible warning system and are fitted with blind spot minimisation devices.



SBS complies with the Direct Vision Standard (DVS) certification, which requires operators of lorries over 12 tonnes of weight, to obtain a permit to enter or operate in Greater London. The DVS measures how much an HGV driver can see through their cab windows, indicating the level of risk to vulnerable road users, such as people walking and cycling near the vehicle. Accreditation Direct Vision Standard for HGV's is part of the Mayor of London's Vision Zero plan to eliminate all deaths and severe injuries on London's transport network by 2041.



Worksafe has since grown into a leader in first aid instructor training with approximately 2,500 instructors, 500+ approved providers and over 175,000 students taught. This accreditation provides our instructors with quality assurance, support, and up-to-date advice on first aid, fire and manual handling compliance, allowing SBS to have the confidence of being workplace compliant while being quality assured by industry specialists. We have trained staff at all locations who can control any first aid emergency, understand how to react to different scenarios and proceed with the best solution.



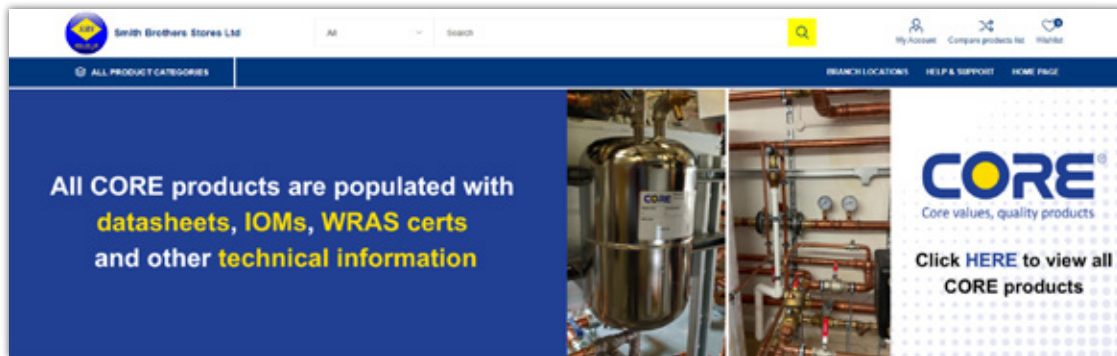
The Institution of Occupational Safety and Health is the world's chartered body for safety and health professionals. They were formed in 1945 and have since grown into a leader in the health and safety profession. They aim to transform the world of work, making it safer and healthier every day. After a rigorous application process, which involved demonstrating extensive health & safety (H&S) knowledge, experience and qualifications. The SBS H&S team was approved to deliver the market-leading course, IOSH Managing Safely.

GENERAL INFORMATION

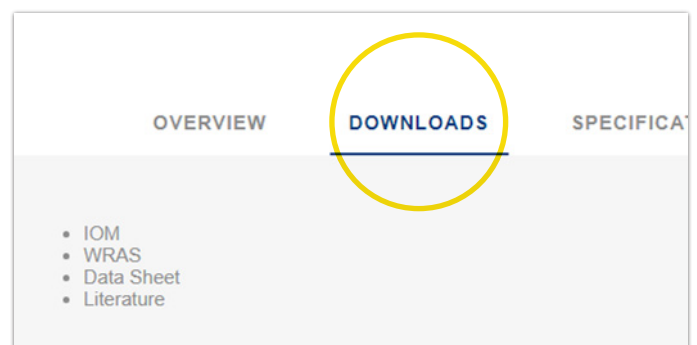
Online Product Information

Our exclusive distribution partner not only stocks all CORE product nationwide, but also houses all product technical details online, including stock location information.

This is all done through www.sbsonline.net



A few screenshot examples are highlighted below to demonstrate what information is available online.



The screenshots show how product is displayed online using a CORE ball valve example.

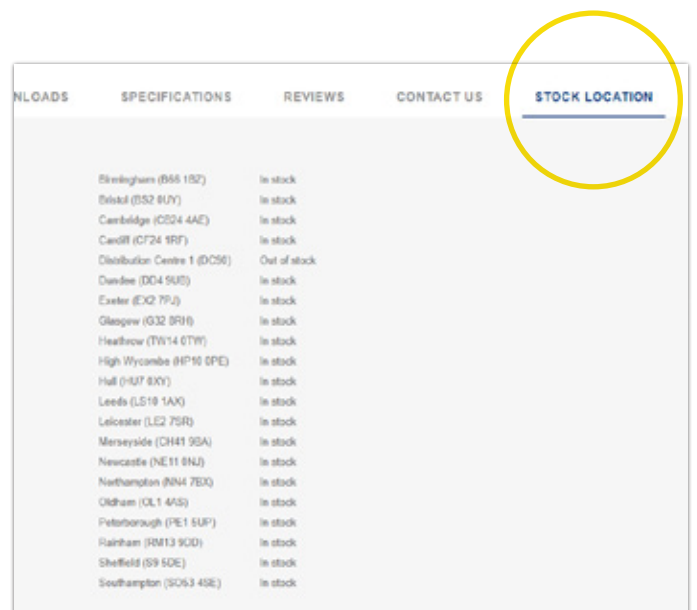
In Stock: Top right highlights the stock status companywide at Smith Brothers

Short Description: A brief product description is given to explain the main product details

Share: These buttons give users the ability to share the particular product via multiple communication channels (Facebook, Email, LinkedIn and X)

Downloads: This tab provides supporting documentation for the product, such as important files like the data sheet and WRAS certificate

Stock Location: If the product is in stock (top right), the location tab highlights every SBS branch which holds stock at present



During the sales journey, Smith Brothers aims to provide the installer with all the service and support they require on every CORE product, making the purchasing journey easier than ever. While our objective is to give all the resources available pre-sale, we understand aftersales care is just as important, which is why CORE and SBS are integrated throughout their processes.

Support

Information



Technical documents published online viewable 24/7
sbscore.co.uk/technical-documents

Product codes provided to make it easy to order with SBS

Product selectors to help choose correct product within the range

Aftersales



SBS have ISO 9001 approved product failure reporting
As CORE is exclusive to Smith Brothers, it means any product issues experienced will be fully investigated and promptly resolved

CORE & SBS are integrated throughout their operation:
Personnel from both CORE and SBS can perform on-site visits to resolve any issues, or provide additional support if required



Keep up to date with the latest news on CORE via our LinkedIn and media channels.



LINKEDIN 'CORE BY SBS'

Get inside information regarding product developments and operational improvements.



ONLINE 'SBSCORE.CO.UK'

Always get the latest information, literature and developments via our website.



ONLINE 'SBSONLINE.NET'

See product stocking status online along with a plethora of other information.



NEWSLETTER

Sign up to the Smith Brothers external newsletter via their website and get the latest information and offers.





Vision Statement

Ultimately, the CORE range aspires to be at the forefront of every HVAC installation project within the UK.



Digital Copy



www.sbscore.co.uk



CORE by SBS