

CORE Tied Flanged Pump Flexible Data Sheet



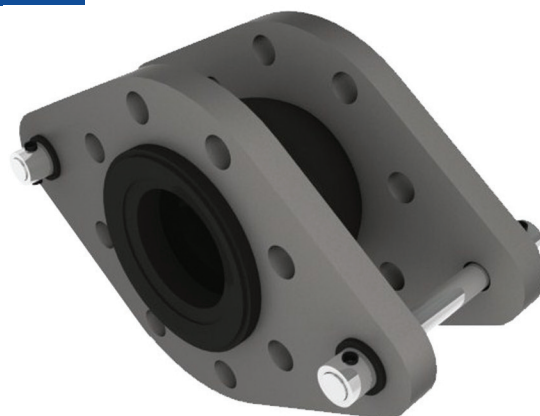
Key Points

Flanges: Carbon Steel - Drilled PN16
(Other Flanges Available)

Nylon Re-inforced EPDM Rubber Body

Steel Reinforced Collars

Tie Bars: Anti-Tamper Carbon Steel



Size (mm)	Installed Length	Material Type	Temperature Limits °C	Part Number
32	130	Nylon Reinforced EPDM	-10 to 90	FBT16032
40	130	Nylon Reinforced EPDM	-10 to 90	FBT16040
50	130	Nylon Reinforced EPDM	-10 to 90	FBT16050
65	130	Nylon Reinforced EPDM	-10 to 90	FBT16065
80	130	Nylon Reinforced EPDM	-10 to 90	FBT16080
100	130	Nylon Reinforced EPDM	-10 to 90	FBT16100
125	130	Nylon Reinforced EPDM	-10 to 90	FBT16125
150	130	Nylon Reinforced EPDM	-10 to 90	FBT16150
200	130	Nylon Reinforced EPDM	-10 to 90	FBT16200
250	130	Nylon Reinforced EPDM	-10 to 90	FBT16250
300	On Request	Nylon Reinforced EPDM	-10 to 90	FBT16300
350	On Request	Nylon Reinforced EPDM	-10 to 90	FBT16350
400	On Request	Nylon Reinforced EPDM	-10 to 90	FBT16400

CORE Pump Flexibles are installed to reduce vibration and noise levels caused by "Plant" upon which they are fitted. These are suitable for use on systems carrying Chilled & Heating Water. Please see above for temperature limits. CORE units are not suitable for use with Potable Water, Water with Oil additives, Compressed Air and Food Applications.

CORE units are manufactured from spherical moulded EPDM, which is a soft compound to offer a high isolation efficiency and high noise absorbing properties.

The CORE units tied type has specially designed anti tamper tie bars. This will only allow the units to be installed at their optimal length and avoid elongation of the unit. These units rated to Maximum 10 bar working pressure, 15 bar test pressure

The units are a full bore, thus removing pressure drop problems. The EPDM rubber is nylon re-inforced, and has a steel wire re-inforced collar.

Flanges BZP coated carbon steel PN16.

CORE units have up to 10 year design life* and are warrantied for a period of 12** months from supply.

CORE units are stamped with Origin of Manufacture, Date Of Manufacture, Batch Number and Size.

Please note, no torsion forces should be applied to these units.

CORE also supply DIN 4809 Approved Pump Flexibles. Please contact our sales office for further information.

* Design life is guidance only. This guidance assumes the unit will not be working at the extremes of its working capacity. This in no way implies a warranty or a guarantee.

** 24 Months warranty is against manufacturing defect only and is limited to the supply only of a replacement product of the same type.

Disclaimer: The information within this document is believed to be correct at the time of publication; however, the document is for guideline use only. For complete accuracy, always check the product with an SBS representative. Missing information was either not available or disclosed. It is your responsibility that any product meets the necessary requirements. Any reliance placed upon this information will be totally at the user's risk.