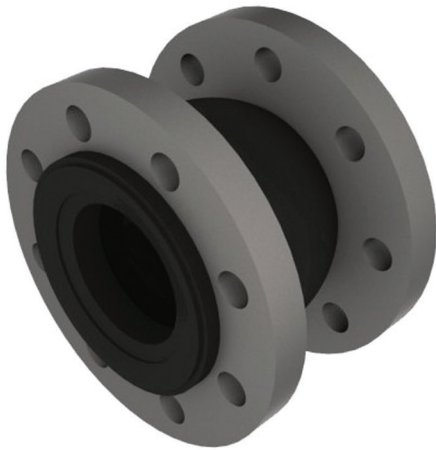


# CORE Untied Flanged Pump Flexible Data Sheet



## Key Points

Flanges: Carbon Steel - Drilled PN16 or PN6  
(Other Flanges Available)

Nylon Re-inforced EPDM Rubber Body

Steel Reinforced Collars

Round flanges - No Tie Bars

Size (mm)	Installed Length	Material Type	Temperature Limits °C	Part Number
32	130	Nylon Reinforced EPDM	-10 to 90	FB6032 / FB16032
40	130	Nylon Reinforced EPDM	-10 to 90	FB6040 / FB16040
50	130	Nylon Reinforced EPDM	-10 to 90	FB6050 / FB16050
65	130	Nylon Reinforced EPDM	-10 to 90	FB6065 / FB16065
80	130	Nylon Reinforced EPDM	-10 to 90	FB6080 / FB16080
100	130	Nylon Reinforced EPDM	-10 to 90	FB6100 / FB16100
125	130	Nylon Reinforced EPDM	-10 to 90	FB6125 / FB16125
150	130	Nylon Reinforced EPDM	-10 to 90	FB6150 / FB16150

CORE Pump Flexibles are installed to absorb vibration and noise levels caused by "Plant" upon which they are fitted. These are suitable for use on systems carrying Chilled & Heating Water. Please see above for temperature limits.

CORE units are not suitable for use with Potable Water, Water with Oil additives, Compressed Air and Food Applications.

CORE Untied units should not be installed on pumps located on Inertia bases.

CORE units are manufactured from spherical moulded EPDM, which is a soft compound to offer a high isolation efficiency and high noise absorbing properties.

The units are a full bore, thus removing pressure drop problems. The EPDM rubber is nylon re-inforced, and has a steel wire re-inforced collar.

Flanges BZP coated carbon steel PN16.

D-Flex units have up to 10 year design life\* and are warranted for a period of 12 months\*\* from supply.

CORE units are stamped with Origin of Manufacture, Date Of Manufacture, Batch Number and Size.

Please note, no torsion forces should be applied to these units.

CORE also Supply DIN 4809 Approved Pump Flexibles. Please Contact our Sales Office for further information.

\* Design life is guidance only. This guidance assumes the unit will not be working at the extremes of its working capacity. This in no way implies a warranty or a guarantee.

\*\* 24 Months warranty is against manufacturing defect only and is limited to the supply only of a replacement product of the same type.