

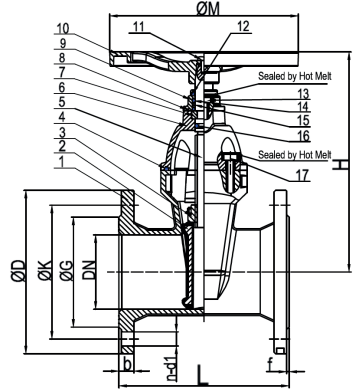
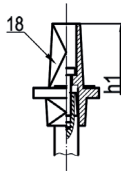
CORE 391

PN16 Ductile Iron Resilient Seat Gate Valve



Features

- BS5163, Type B cover and stem
- Non rising stem, clockwise closing
- Flange mounting to EN1092-2 PN16
- Face to face length to EN558-1 Series 3
- Internally and externally fusion bonded epoxy coated
- Handwheel, gearbox or cap top operation



Technical data

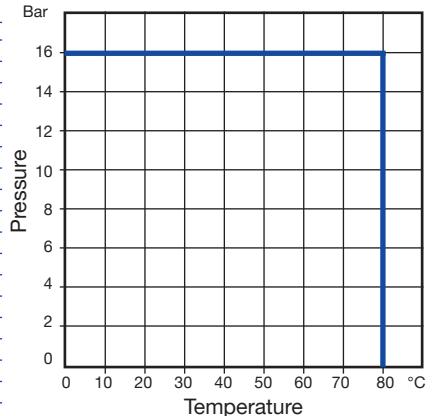
Max pressure: 16 Bar

Working temp: 0°C to +80°C

DN	2"	2 1/2"	3"	4"	5"	6"	8"	10"	12"
L	178	190	203	229	254	267	292	330	356
H	215	235	265	315	350	385	485	600	680
M	200	200	254	254	315	315	315	406	406
h1	285	300	320	390	430	470	560	680	770
D	165	185	200	220	250	285	340	405	460
K	125	145	160	180	210	240	295	355	410
G	99	118	132	156	184	211	266	319	370
n-d1	4- Ø19	4- Ø19	8- Ø19	8- Ø19	8- Ø19	8- Ø23	12- Ø23	12- Ø28	12- Ø28
b	19	19	19	19	19	19	20	22	24.5
f	3	3	3	3	3	3	3	3	4
Kv	229	360	537	933	1595	2685	5004	8393	12072
Kgs	9	12	14	19	24	31	52	87	116

N. Part Name Materials

1	Body	Ductile Iron GGG50 BS2789
2	Disc	Ductile Iron GGG50 + EPDM (WRAS) BS2789
3	Stem Nut	Brass HPb59-1 BS2872-2874
4	Bonnet Gasket	EPDM (WRAS) ISO4633
5	Stem	Stainless Steel 316 BS970
6	Bonnet	Ductile Iron GGG50 BS2789
7	Holding Ring	Brass HPb59-1 BS2872-2874
8	O-Ring	EPDM (WRAS) ISO 4633
9	Gland	Ductile Iron GGG50 BS2789
10	Handwheel	Ductile Iron GGG50 BS2789
11	Screw	Stainless Steel 316 BS970
12	Dust Ring	EPDM (WRAS) ISO 4633
13	Gland Bolts	Stainless Steel 316 BS970
14	O-Ring	EPDM (WRAS) ISO 4633
15	Washers	Nylon 66
16	O-Ring	EPDM (WRAS) ISO 4633
17	Bonnet Bolts	Stainless Steel 316 BS970
18	Cap Top	Ductile Iron GGG50 BS2789



V1. Dimensions in mm

The information within this document is believed to be correct at the time of publication; however, the document is for guideline use only. For complete accuracy, always check the product with an SBS representative. Missing information was either not available or disclosed. It is your responsibility that any product meets the necessary requirements. Any reliance placed upon this information will be totally at the user's risk.